

ISD ChipCorder® ISD18B00 Series DataSheet

The information described in this document is the exclusive intellectual property of Nuvoton Technology Corporation and shall not be reproduced without permission from Nuvoton.

Nuvoton is providing this document only for reference purposes of Audio Product Line based system design. Nuvoton assumes no responsibility for errors or omissions.

All data and specifications are subject to change without notice.

For additional information or questions, please contact: Nuvoton Technology Corporation.

www.nuvoton.com

TABLE OF CONTENTS

1. GENERAL DESCRIPTION	3
2. FEATURES	3
3. BLOCK DIAGRAM	5
4. PAD DESCRIPTION	5
5. FUNCTIONAL DESCRIPTION	7
5.1. Level-triggered Record ($\overline{\text{RECL}}$) Operation:	7
5.2. Edge-triggered Record ($\overline{\text{RECE}}$) Operation:	7
5.3. Edge-triggered playback ($\overline{\text{PLAYE}}$) Operation:	7
5.4. Level- triggered playback ($\overline{\text{PLAYL}}$) Operation:	8
5.5. Sound Effect ($\overline{\text{SE}}$) Operation:	9
5.6. Microphone amplifier gain	9
5.7. Playback (supersedes Record) Operation :	9
5.8. Feed-Through mode Operation:	9
5.9. $\overline{\text{LEDR}}$ Operation:	9
5.10. $\overline{\text{LEDP}}$ Operation:	9
5.11. Rosc Operation:	9
5.12. Speaker Outputs	10
5.13. TryMe Special Operation:	10
5.14. Power interruption	11
5.15. Power-On to Playback Operation :	11
5.16. Power-On to Loop Playback Operation :	11
5.17. Automatic Playback after Record Operation :	11
6. ABSOLUTE MAXIMUM RATINGS	12
6.1 Operating Conditions	12
7. ELECTRICAL CHARACTERISTICS	13
7.1. DC Parameters	13
7.2. AC Parameters	14
8. TYPICAL APPLICATION CIRCUIT	15
9. DIE INFORMATION	17
10. ORDERING INFORMATION	18
11. REVISION HISTORY	19
IMPORTANT NOTICE	20

1. GENERAL DESCRIPTION

Nuvoton's ISD18B00 ChipCorder® Series is a single-chip single-message record/playback device with a special TryMe feature. It features wide operating voltage range, from 2.4V to 5.5V. Its sampling frequency, ranging from 4kHz to 8kHz, is externally controlled via resistor at Rosc pin. This device also includes microphone amplifier, anti-aliasing filter, multilevel storage array, smoothing filter and speaker amplifier. Two external resistors are used to adjust the microphone amplifier gain for the incoming signal. Thus, a minimum record/playback subsystem can be configured with a microphone, a speaker, several passive components, two push buttons, and a power source.

Recordings are stored into on-chip non-volatile memory, providing zero-power message storage. This unique, single-chip solution is made possible through Nuvoton's patented Multi-Level Storage technology. Voice and audio signals are stored directly into memory in their natural form, providing high-quality, solid-state voice reproduction. The device is automatically power down after each operation cycle with typical standby current 1μA. With the embedded Flash memory employed, data retention up to 100 years and typical 100,000 erase/record cycles can be reached.

2. FEATURES

- Supply voltage: 2.4V ~ 5.5V
- User-selected sampling frequency via external resistor

Sampling Frequency	8 kHz	6.4 kHz	5.3 kHz	4 kHz
Rosc	80 KΩ	100 KΩ	120 KΩ	160 KΩ

- Variable duration selected by external resistor:

Sampling Frequency	8 kHz	6.4 kHz	5.3 kHz	4 kHz
ISD18B12	6 secs	7.5 secs	9 secs	12 secs
ISD18B24	12 secs	15 secs	18 secs	24 secs

- $\overline{\text{RECL}}$: Level recording
- $\overline{\text{RECE}}$: Edge-trigger, toggle on-off
- $\overline{\text{PLAYL}}$: Level playback or looping playback
- $\overline{\text{PLAYE}}$: Edge-trigger, toggle on-off
- $\overline{\text{LEDR}}$: LED output for recording
- $\overline{\text{LEDP}}$: LED output for playback
- $\overline{\text{FT}}$: Feed-through microphone input to speaker outputs
- Microphone amplifier gain: user control via two external resistors
- With feed-through enabled, record microphone signal into memory while feed-through path remains active
- Playback takes precedence over the Recording operation

- **TryMe** : TryMe special mode
- Package option: DIE
- Temperature options: 0°C ~ +50°C

3. BLOCK DIAGRAM

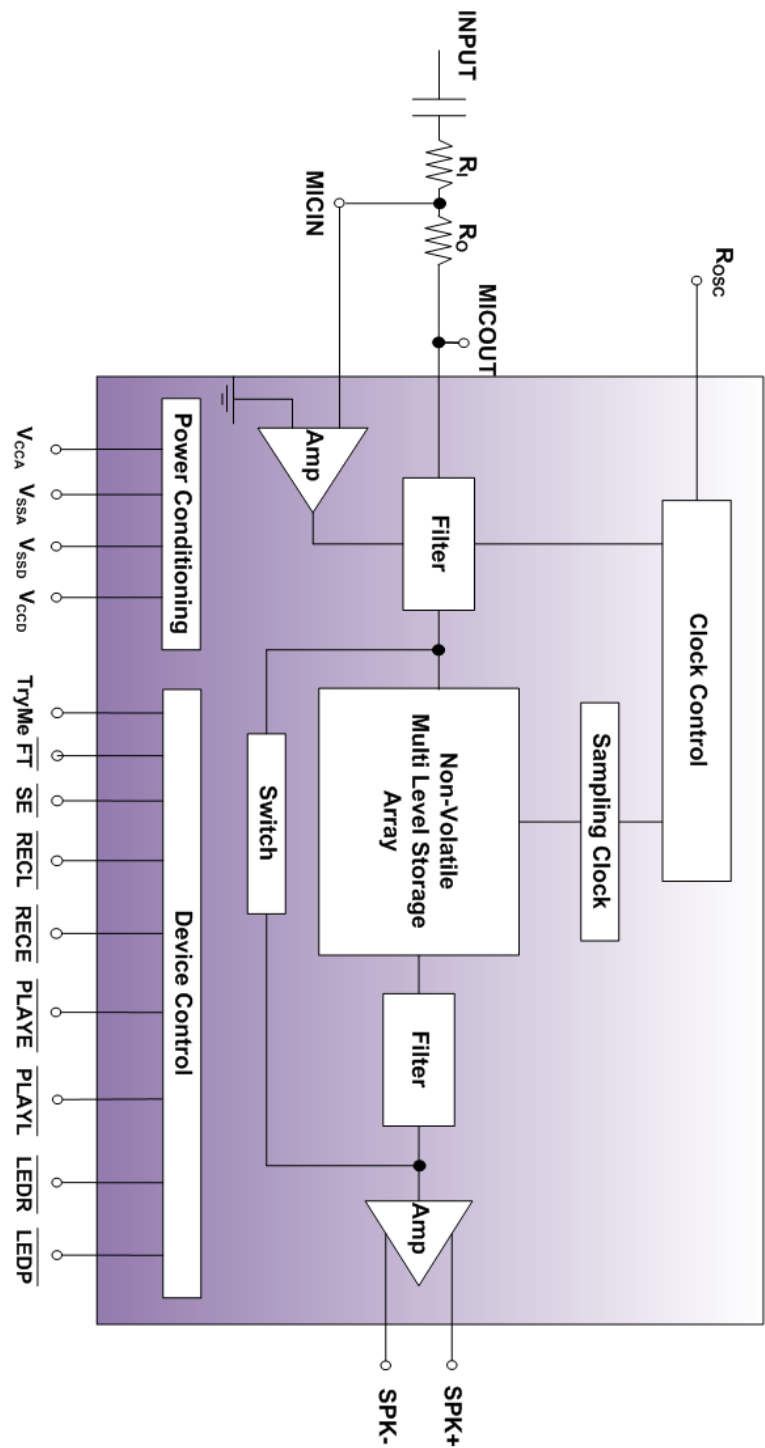


Figure 3-1 Block Diagram

4. PAD DESCRIPTION

PAD NAME	I / O	FUNCTION
----------	-------	----------

V _{SSD}	I	Digital Ground: Ground path for digital circuits.
$\overline{\text{RECL}}$	I	Level-Triggered Record: Low active input, Level-hold.
$\overline{\text{PLAYE}}$	I	Edge-Triggered Playback: Low active input, Edge-trigger, toggle on-off.
$\overline{\text{PLAYL}}$	I	Level-Triggered Playback: Low active input, Level-hold.
$\overline{\text{RECE}}$	I	Edge-Triggered Record: Low active input, Edge-trigger, toggle on-off.
NC	--	NC: No Connect
NC	--	NC: No Connect
NC	--	NC: No Connect
NC	--	NC: No Connect
MICIN	I	Microphone Input: The MICIN transfers input signal to the on-chip microphone amplifier.
NC	--	NC: No Connect
MICOUT	O	Microphone Output: Output of the microphone amplifier.
NC	--	NC: No Connect
NC	--	NC: No Connect
SPK-	O	SPK-: The negative signal of the differential speaker outputs.
V _{SSA}	I	Analog Ground: Ground path for analog circuits.
SPK+	O	SPK+: The positive signal of the differential speaker outputs.
V _{CCA}	I	Power Supply: Power supply for analog circuits.
Rosc	I	Oscillator Resistor: Connect an external resistor from this pin to V _{SSA} to select the sampling frequency
$\overline{\text{FT}}$	I	Feed-Through (FT): Low active input, Level-hold, Feed-through microphone input to speaker outputs while in active state.
NC	--	NC: No Connect
NC	--	NC: No Connect
TryMe	I	TryMe Mode : High active input, Level-hold. A special operating mode. Tied to $\overline{\text{RECL}}$ or $\overline{\text{RECE}}$ for normal operations. Tide to V _{CCD} or leave unconnected for TryMe mode.
$\overline{\text{LEDP}}$	O	LED output for Playback: During playback, this output is Low.
NC	--	NC: No Connect
$\overline{\text{SE}}$	I	Sound Effect: Low active input, Level-hold, optional beeping sound effect. Tied to $\overline{\text{LEDR}}$ to activate sound effect during record. Tied to V _{CCD} if no sound effect desired.
V _{CCD}	I	Power Supply: Power supply for digital circuits.
$\overline{\text{LEDR}}$	O	LED output for Recording: During recording, this output is Low.

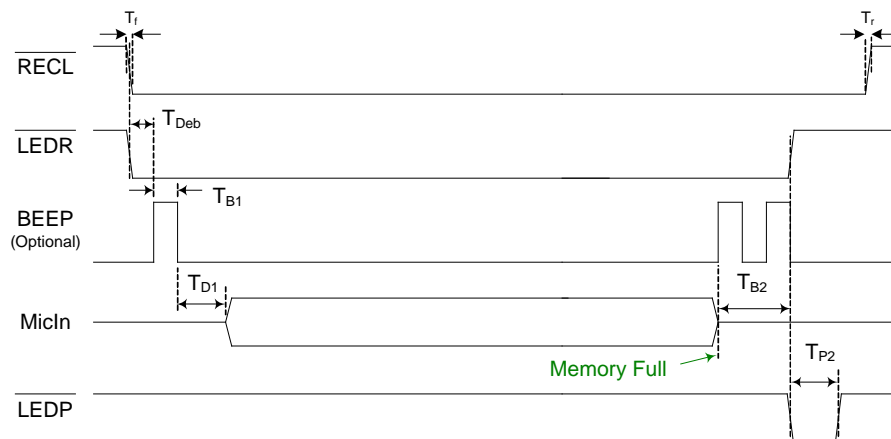
5. FUNCTIONAL DESCRIPTION

For the following related operations, if SE is not enabled, then no beep sound is heard. Also, the timing diagrams may not be in direct proportional scale.

5.1. Level-triggered Record ($\overline{\text{RECL}}$) Operation:

- Recording starts from beginning of the memory and $\overline{\text{LEDR}}$ is on.
- Recording ceases whenever $\overline{\text{RECL}}$ returns to High or when end of memory is reached and $\overline{\text{LEDR}}$ is off.
- Then device will automatically power down.

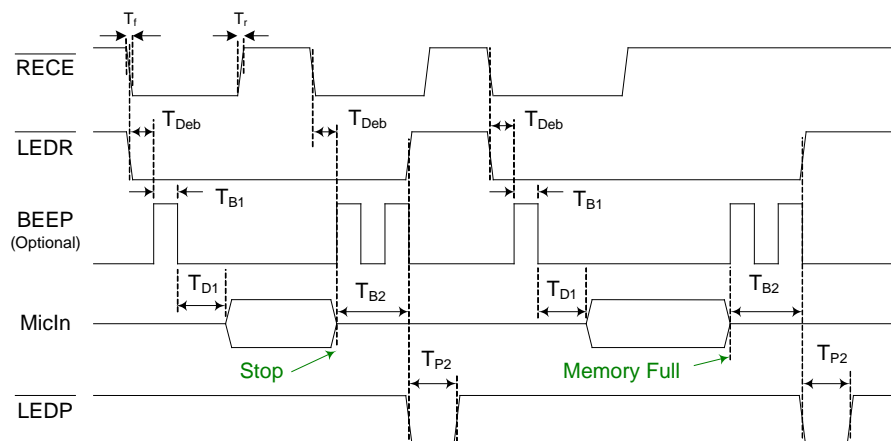
Fig. 1: Record-Level ($\overline{\text{RECL}}$) function till memory full



5.2. Edge-triggered Record ($\overline{\text{RECE}}$) Operation:

- Recording starts from beginning of the memory and $\overline{\text{LEDR}}$ is on.
- Recording ceases whenever a subsequent trigger occurs at $\overline{\text{RECE}}$ or when end of memory is reached and $\overline{\text{LEDR}}$ is off.
- Then device will automatically power down.

Fig. 2: Record-Edge ($\overline{\text{RECE}}$) function with on-off

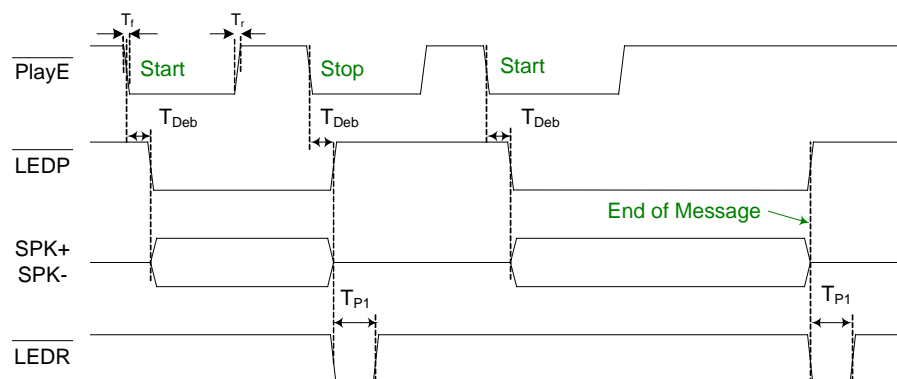


5.3. Edge-triggered playback ($\overline{\text{PLAYE}}$) Operation:

- Playback starts from beginning of the memory and $\overline{\text{LEDP}}$ is on.
- Playback stops whenever end of message or a subsequent trigger occurs and $\overline{\text{LEDP}}$ is off.

- Then device will automatically power down.

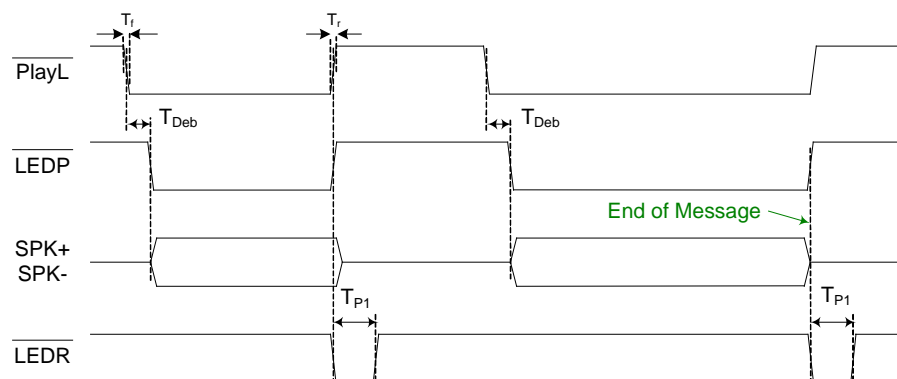
Fig. 3 : Playback–Edge ($\overline{\text{PLAYE}}$) function



5.4. Level- triggered playback ($\overline{\text{PLAYL}}$) Operation:

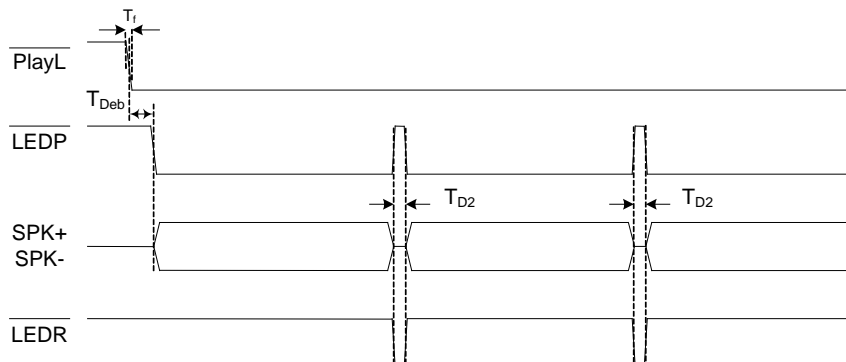
- Playback starts from beginning of the memory and $\overline{\text{LEDP}}$ is on.
- Playback stops whenever an EOM marker is reached or $\overline{\text{PLAYL}}$ returns to High and $\overline{\text{LEDP}}$ is off.
- Then device will automatically power down.

Fig. 4: Playback–Level ($\overline{\text{PLAYL}}$) function



- Holding $\overline{\text{PLAYL}}$ Low constantly will perform looping playback function.

Fig. 5: Looping playback function via $\overline{\text{PLAYL}}$



5.5. Sound Effect ($\overline{\text{SE}}$) Operation:

- Beeping feature for recording. Once active, one-beep indicates the start of recording and two-beep represents the end of recording.

5.6. Microphone amplifier gain

- Two external resistors, R_I and R_O , are used to adjust the microphone amplifier gain with respect to the incoming signal.

5.7. Playback (supersedes Record) Operation :

- Playback takes precedence over the Recording operation.
- If either $\overline{\text{PLAYE}}$ or $\overline{\text{PLAYL}}$ is activated during a recording cycle, the recording immediately ceases and playback of the just-recorded message performs accordingly.

5.8. Feed-Through mode Operation:

- As $\overline{\text{FT}}$ is held Low, the input signal from MICIN will directly transmit to the speaker outputs.
- If either $\overline{\text{RECE}}$ is triggered or $\overline{\text{RECL}}$ is held Low simultaneously after $\overline{\text{FT}}$ is enabled, then input signal will be recorded into memory while the Feed-Through mode is still on.
- After $\overline{\text{FT}}$ is enabled, activating either $\overline{\text{PLAYE}}$ or $\overline{\text{PLAYL}}$ will first disable the feed-through path and play the recorded message. Once playback is completed, the feed-through feature resumes.

5.9. $\overline{\text{LEDR}}$ Operation:

- $\overline{\text{LEDR}}$ stays on during recording.
- Also, $\overline{\text{LEDR}}$ pulses Low momentarily at the end of playback operation.

5.10. $\overline{\text{LEDP}}$ Operation:

- $\overline{\text{LEDP}}$ stays on during playback.
- Also, $\overline{\text{LEDP}}$ pulses Low momentarily at the end of recording.

5.11. Rosc Operation:

- When the R_{OSC} varies from 80 K Ω to 160 K Ω , the sampling rate changes from 8 kHz to 4 kHz accordingly.
- When R_{OSC} resistor value is changed during playback, the tone of a recorded message will alter either faster or slower.

5.12. Speaker Outputs

- **SPK+** and **SPK-** are used to drive an 8Ω speaker differentially. They are tri-state while device is in power down status.

5.13. TryMe Special Operation:

This is a special feature. When **TryMe** is High, TryMe is active. When **TryMe** is Low, TryMe is disabled. The enabling and disabling of this feature is merely permitted while the device is in power down status. Once **TryMe** is set, trigger on either **RECL** or **RECE** will initiate the TryMe operation sequence. While active, the device performs a combination of the following 3 operations sequentially: record a new message, automatic playback the just-recorded message once, and then delete the recorded message. Internal pull-up exists.

The details of each operation are described as follows:

- Recording:
 - The recording behavior follows the characteristics of the selected record pin, **RECL** or **RECE**.
 - While recording, the **LEDR** is on if an LED is connected appropriately.
- Playback:
 - Upon completion of recording, the device automatic plays the just-recorded message once and stops. During this operation, change of state on any control pins is prohibited.
 - While playback, the **LEDP** is on if an LED is connected appropriately.
- Erase:
 - Upon completion of playback, the device will involuntary delete the recorded message. During this operation, change of state on any control pins is banned.

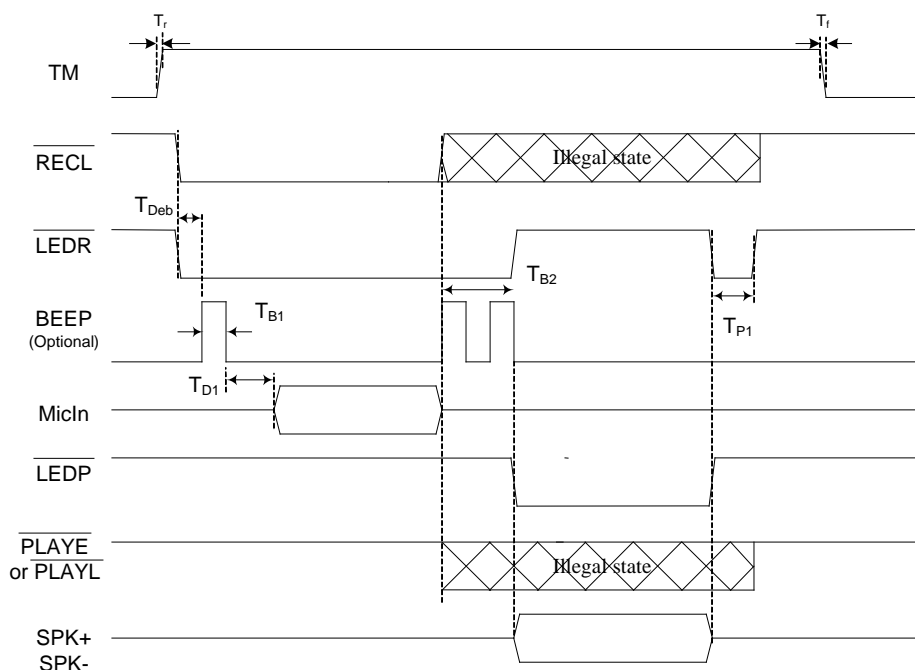
After completion of this TryMe operation, the device returns to standby state automatically. Once playback operation starts, any input on other controls is illegal.

As a summary, the TryMe mode starts in the following conditions:

Pin	TryMe	RECL	RECE
Logic Level	1	0	1
	1	1	0

Under no circumstances, while this special operation is in progress, neither the power is disturbed nor any change of state on other control pins are permitted. Otherwise, it may cause the device becoming malfunction.

Fig 6: TryMe function via (**TryMe** + **RECL**)



5.14. Power interruption

- Any power interruption during an operation is **strongly** not recommended. If happened, it may result the device becoming malfunction.

5.15. Power-On to Playback Operation :

- If **PLAYE** or **PLAYL** is held at Low during power turns on, the device plays message accordingly with respect to which play control being employed.

5.16. Power-On to Loop Playback Operation :

- If **PLAYL** is hardwired to ground permanently, once power is on, the device performs looping playback non-stop. This status will sustain unless power is turned off.

5.17. Automatic Playback after Record Operation :

- If **LEDP** is connected to **PLAYE**, after a record operation, then the device will automatic play message once, then powers down.

6. ABSOLUTE MAXIMUM RATINGS

ABSOLUTE MAXIMUM RATINGS ^[1]

CONDITION	VALUE
Junction temperature	150°C
Storage temperature range	-65°C to +150°C
Voltage applied to any pins	(V _{SS} – 0.3V) to (V _{CC} + 0.3V)
Voltage applied to Input pins (current limited to +/- 20 mA)	(V _{SS} – 1.0V) to (V _{CC} + 1.0V)
Voltage applied to output pins (current limited to +/-20 mA)	(V _{SS} – 1.0V) to (V _{CC} + 1.0V)
V _{CC} – V _{SS}	-0.3V to +7.0V

^[1] Stresses above those listed may cause permanent damage to the device. Exposure to the absolute maximum ratings may affect device reliability and performance. Functional operation is not implied at these conditions.

6.1 OPERATING CONDITIONS

OPERATING CONDITIONS

CONDITION	VALUE
Operating temperature range	0°C to +50°C
Operating voltage (V _{CC}) ^[1]	+2.4V to +5.5V
Ground voltage (V _{SS}) ^[2]	0V

^[1] V_{CC} = V_{CCA} = V_{CCD}

^[2] V_{SS} = V_{SSA} = V_{SSD}

7. ELECTRICAL CHARACTERISTICS

7.1. DC PARAMETERS

PARAMETER	SYMBOL	MIN ^[2]	TYP ^[1]	MAX ^[2]	UNITS	CONDITIONS
Input Low Voltage	V _{IL}			0.3xV _{CC}	V	
Input High Voltage	V _{IH}	0.7xV _{CC}			V	
Output Low Voltage	V _{OL}			0.3xV _{CC}	V	I _{OL} = 4.0 mA ^[3]
Output High Voltage	V _{OH}	0.7xV _{CC}			V	I _{OH} = -1.6 mA ^[3]
Standby Current	I _{STBY}		1	10	μA	[4] [5]
Record Current	I _{REC}			15	mA	V _{CC} = 5.5V
Playback Current	I _{PLAY}			15	mA	V _{CC} = 5.5V, no speaker load
Pull-up device for $\overline{\text{RECL}}$, $\overline{\text{RECE}}$, $\overline{\text{PLAYE}}$, $\overline{\text{PLAYL}}$, $\overline{\text{FT}}$ & TryMe pins	R _{PU1}		40		kΩ	
Pull-up device for $\overline{\text{SE}}$	R _{PU2}		80		kΩ	
Output Load Impedance	R _{EXT}	8			Ω	Speaker load
MIC Input Voltage	V _{IN}	4		400	mV	Peak-to-peak
MIC Amplifier Gain	A _{MicAmp}	0		+34	dB	Depend on RO/RI
Gain from MIC to SP+/SP-	A _{MSP}	+12		+46	dB	Depend on RO/RI

Notes:

[1] Typical values @ T_A = 25°, V_{CC} = 5.5V and sampling frequency (Fs) at 8 kHz, unless stated.

[2] All Min/Max limits are guaranteed by design, electrical testing and/or characterization. Not all specifications are 100 percent tested.

[3] LED output during recording.

[4] V_{CCA} and V_{CCD} are connected together. Also, V_{SSA} and V_{SSD} are connected together.

[5] $\overline{\text{RECL}}$, $\overline{\text{RECE}}$, $\overline{\text{PLAYE}}$, $\overline{\text{PLAYL}}$, $\overline{\text{SE}}$, $\overline{\text{FT}}$ and TryMe must be at V_{CCD}. External components are biased under a separated power supply.

7.2. AC PARAMETERS

CHARACTERISTIC	SYMBOL	MIN ^[2]	TYP ^[1]	MAX ^[2]	UNITS	CONDITIONS
Sampling Frequency	F _S	4		8	kHz	[3]
Record Duration	T _{REC}	6		12	sec	Depend on F _S [3]
Playback Duration	T _{PLAY}	6		12	sec	Depend on F _S [3]
Rising Time	T _r		100		nsec	[3]
Falling Time	T _f		100		nsec	[3]
Debounce Time	T _{Deb}	536k/FS			msec	[3] [4]
Beep Duration	T _{B1}		512k/FS		msec	[3] [4]
Beep-Beep Duration	T _{B2}		1536k/FS		msec	[3] [4]
Delay to start recording	T _{D1}		1552k/FS		msec	[3] [4]
Delay during looping	T _{D2}		1k/FS		msec	[3] [4]
LEDR Pulse Low Time	T _{P1}		1024k/FS		msec	[3] [4]
LEDP Pulse Low Time	T _{P2}		1280k/FS		msec	[3] [4]

Notes:

[1] Conditions are V_{CC} = 5.5V and T_A = 25°C, unless specified.

[2] All Min/Max limits are guaranteed by design, electrical testing and/or characterization. Not all specifications are 100 percent tested.

[3] The value changes accordingly to the F_S applied. Also, the internal oscillator may vary as much as ±10% over the operating temperature and voltage ranges.

[4] k=1000

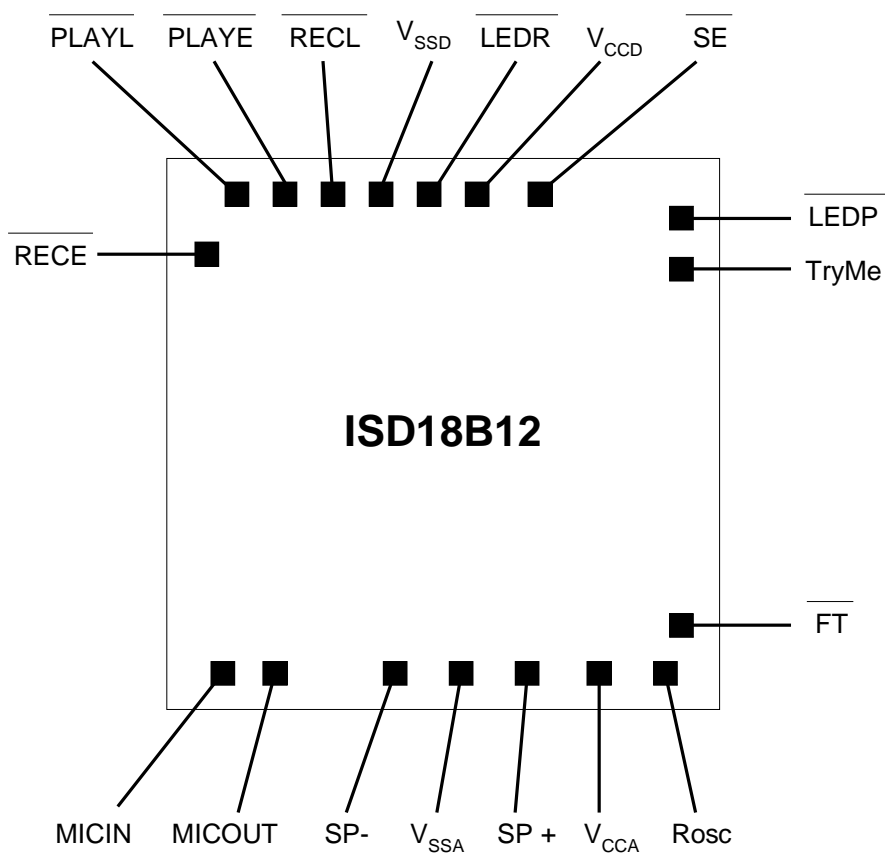
Figure 8-2 TryMe Feature**Good Audio Design Practices**

Nuvoton's ChipCorder are very high-quality single-chip voice recording and playback devices. To ensure the highest quality voice reproduction, it is important that good audio design practices on layout and power supply decoupling are followed. See Application Information links below for details.

- **Good Audio Design Practices (apin11.pdf)**
- **Single-Chip Board Layout Diagrams (apin12.pdf)**

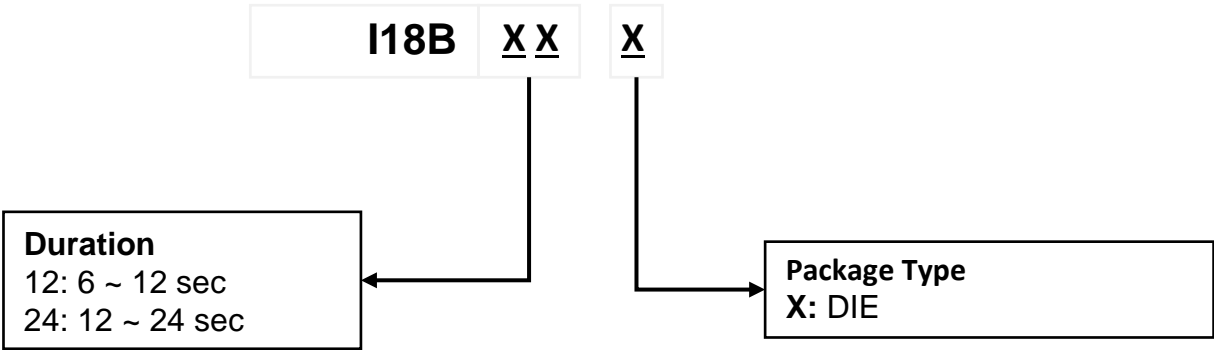
It is strongly recommended that before any design or layout project starts, the designer should contact Nuvoton Sales Rep for the most update technical information.

9. DIE INFORMATION



Contact Nuvoton Sales Representatives for information.

10.ORDERING INFORMATION



Package Number	Part Number	Ordering Number	Duration	Package	Temperature	Notes
ISD18B12X	ISD18B12X	I18B12X	6 ~ 12 sec	DIE	0°C ~ 50°C	
ISD18B24X	ISD18B24X	I18B24X	12 ~ 24 sec	DIE	0°C ~ 50°C	

11. REVISION HISTORY

REVISION	DATE	DESCRIPTION
1.0	Apr 2, 2020	Update Document Format
1.1	Jun 28, 2021	Update Ordering Information
1.2	Feb 1, 2023	Update format

IMPORTANT NOTICE

Nuvoton Products are neither intended nor warranted for usage in systems or equipment, any malfunction or failure of which may cause loss of human life, bodily injury or severe property damage. Such applications are deemed, "Insecure Usage".

Insecure usage includes, but is not limited to: equipment for surgical implementation, atomic energy control instruments, airplane or spaceship instruments, the control or operation of dynamic, brake or safety systems designed for vehicular use, traffic signal instruments, all types of safety devices, and other applications intended to support or sustain life.

All Insecure Usage shall be made at customer's risk, and in the event that third parties lay claims to Nuvoton as a result of customer's Insecure Usage, customer shall indemnify the damages and liabilities thus incurred by Nuvoton.

*Please note that all data and specifications are subject to change without notice.
All the trademarks of products and companies mentioned in this datasheet belong to their respective owners.*