

REC50-V SERIES

High Voltage Contactors

500A CONTINUOUS DUTY

1500V SYSTEM VOLTAGE



FEATURES

SPST Normally Open High Voltage Contactors

- Hermetic seal with gas fill
- Auxiliary contacts – for main position feedback
- Integrated coil economizer to reduce coil holding power
- Meets RoHS 2011/65/EU
- UL recognized (File E536110)



PERFORMANCE

TABLE 1. SPECIFICATIONS		
CHARACTERISTIC		MEASURE
Contact Arrangement		Form X, SPST NO
Max Switching Voltage		1,500 VDC
Dielectric Withstand Voltage Across Open Contacts		4,500 VAC, 1 minute 4,500 VDC, 1 minute
Continuous Current (250mm ² conductor)		500A
Overload Current	1 minute	1,000A
	30 seconds	2,000A
Make and Break		See table
Min Insulation Resistance		1,000 Mohm @ 1,000V
Contact Voltage Drop (Max)		50mV @ 100A
Operate Time (Max, incl bounce)		40ms
Release Time (Max)		12ms
Shock - Functional, 1/2 Sine, 11ms		20G
Shock - Destructive, 1/2 Sine, 11ms		50G
Operating Temperature		-40°C to 85°C
Ingress Protection		Exceeds IP69, (Hermetically sealed)
Mechanical life		200,000
AUXILIARY CONTACTS		MEASURE
Contact Arrangement		SPST
Continuous Current		3A
Minimum Current		5mA @ 8V
COIL		MEASURE
Nominal Voltage		12-36 VDC
Pick-up Voltage (Max)		9 VDC
Drop-out Voltage (Min)		5 VDC
Inrush Current (Max)		3.8A
Holding Current		0.34A @ 12 VDC
		0.16A @ 24 VDC

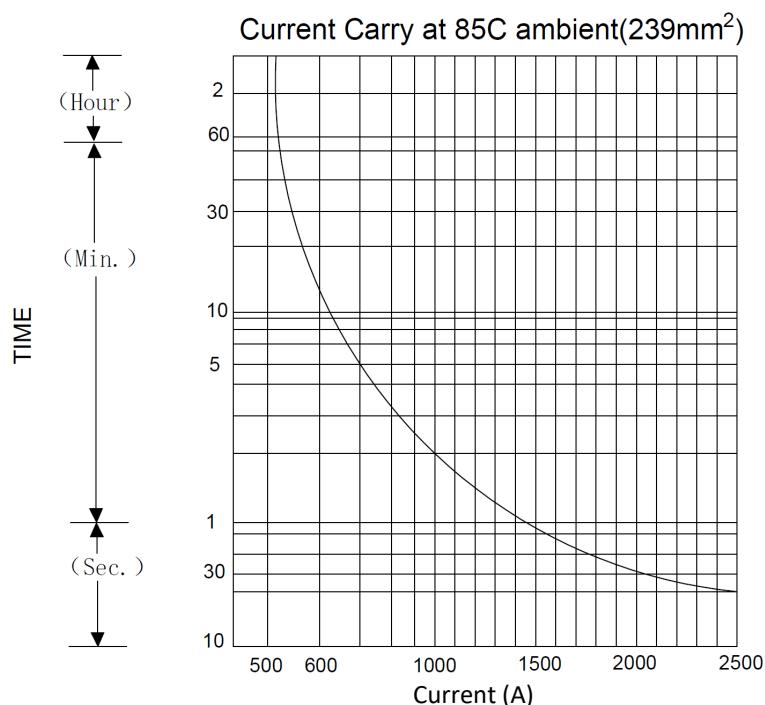


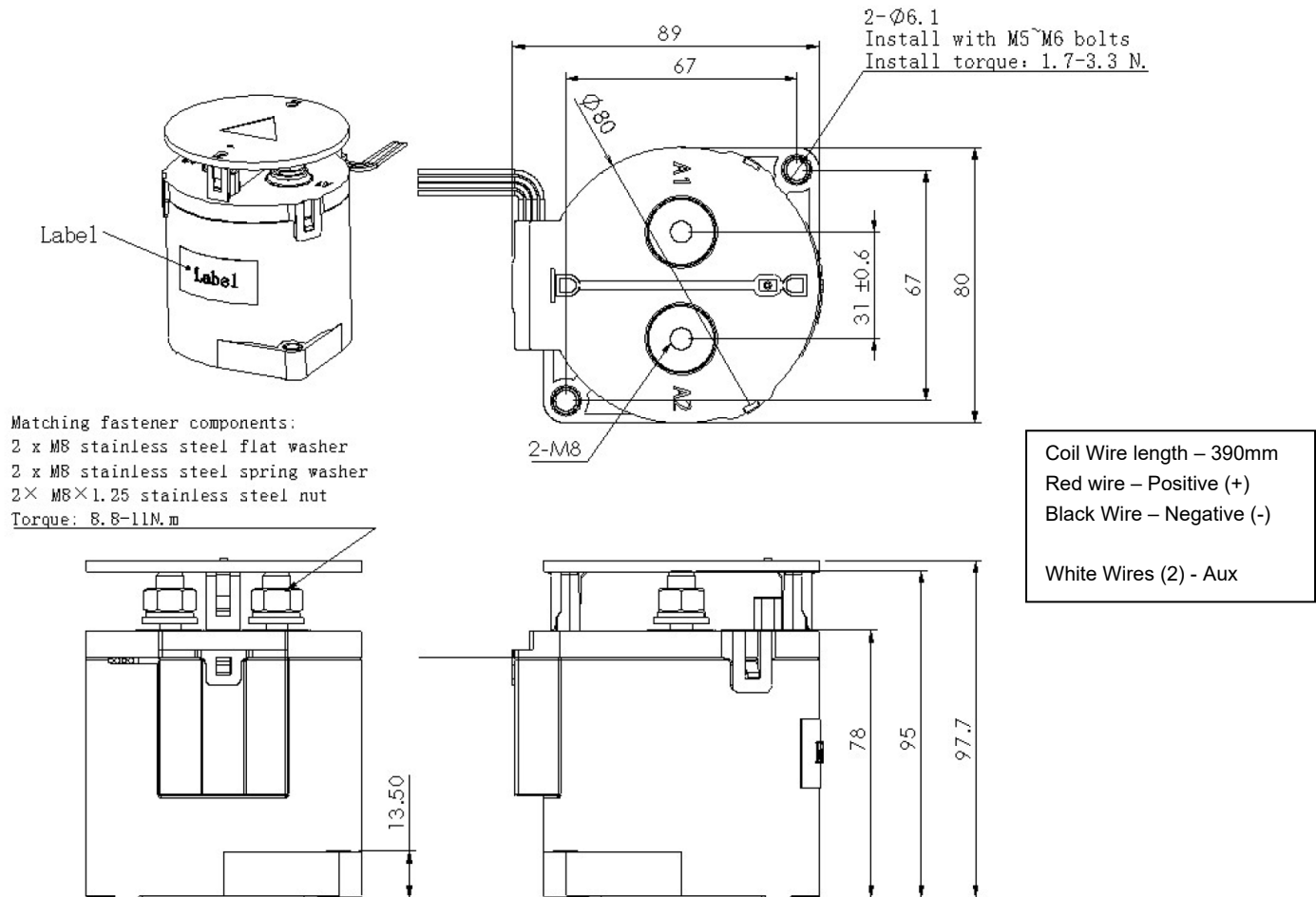
TABLE 2. RESISTIVE LOAD SWITCHING (MAKE / BREAK DATA)		
BI-DIRECTIONAL		CYCLES (1 cycle = 1 make + 1 break)
VOLTAGE	CURRENT	
750V	500A	1,000
1500V	200A	1,000
1000V	1000A	BREAK only – 1 cycle

OPTIONS

TABLE 3. PRODUCT NOMENCLATURE

	CONTACT POLARITY	MOUNTING	COIL	AUXILIARY CONTACTS	Mounting Position
REC50	B Bi-directional	1 Bottom Mount	J 12-36V internal PWM	A SPST, Normally Open	-V Vertical

PRODUCT DIMENSIONS [mm]


TABLE 4. DIMENSIONAL AND INSTALLATION

CHARACTERISTIC	MEASURE
Weight	1180g (2.6 lb)
Mounting Position	Vertical
Package Quantity	8 each
Install Torque M8 Main Terminals	9-11Nm (80-97 in-lb)

NOTES

- Polarity Sensitive versions are marked +A1 and -A2 for the power terminals. For applications that require the contactor under load, please ensure current is flowing from the +A1 to the -A2 terminal when breaking/opening under load. For Bi-Directional versions the direction of current does not matter when breaking under load.
- Attached cables and busbars directly to the main terminal pad using the recommended install torque. Do not use washers or other materials between the contactor and the conductor. This will ensure the lowest possible contact resistance.
- Avoid excessive coil voltages. Exceeding the ratings on the datasheet may result in high coil temperature and coil failure.
- Contactor may be used above Max Switching Voltage if the application does not require significant load breaking. Please contact Rincon Power to discuss in more detail.

Legal Disclaimer Notice for Rincon Power, LLC

This legal disclaimer applies to purchasers and users of products manufactured by or on behalf of Rincon Power, LLC ("Rincon"). Unless otherwise expressly indicated in writing, Rincon's products, product specifications and data sheets relating thereto are subject to change without notice. Users should check for and obtain the latest revision information and verify that such information is current and complete before placing orders for Rincon's products. Users should always verify the actual performance of the Rincon's products in their specific systems and applications.

Except as expressly set forth in the relevant purchaser order terms and conditions or applicable agreement, Rincon makes no warranty, representation or guarantee regarding the products, expressed or implied, including, but not limited to, a warranty of merchantability or fitness for a particular purpose. To the maximum extent permitted by applicable law, Rincon disclaims (i) any and all liability arising out of the application or use of any product, (ii) any and all liability, including without limitation special, consequential or incidental damages, and (iii) any and all implied warranties, including warranties of fitness for particular purpose, non-infringement and merchantability.

In no event shall Rincon be liable for any incidental or consequential damages resulting from the use, misuse or inability to use the product. This exclusion applies regardless of whether such damages are sought based on breach of warranty, breach of contract, negligence, strict liability in tort, or any other legal theory.