

3-terminal filters

For automotive general use

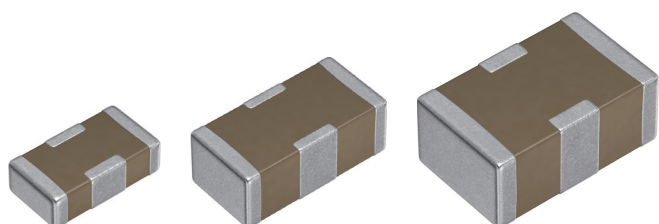
YFF-AC series

YFF15AC 1005 [0402 inch] Feed through filter

YFF18AC 1608 [0603 inch] Feed through filter

YFF21AC 2012 [0805 inch] Feed through filter

* Dimensions code: JIS[EIA]



REMINDERS FOR USING THESE PRODUCTS

Before using these products, be sure to request the delivery specifications.

SAFETY REMINDERS

Please pay sufficient attention to the warnings for safe designing when using this products

REMINDERS

1. The products listed in this specification are intended for use in automotive applications under normal operation and usage conditions. The products are not designed or warranted to meet the requirements of the applications listed below, whose performance and/or quality requires a more stringent level of safety or reliability, or whose failure, malfunction or defect could cause serious damage to society, person or property.
Please understand that we are not responsible for any damage or liability caused by use of the products in any of the applications below or for any other use exceeding the range or conditions set forth in this specification sheet. If you intend to use the products in the applications listed below or if you have special requirements exceeding the range or conditions set forth in this specification, please contact us.
- | | |
|--|--|
| (1) Aerospace/aviation equipment | (7) Transportation control equipment |
| (2) Transportation equipment (electric trains, ships, etc.) | (8) Public information-processing equipment |
| (3) Medical equipment (excepting Pharmaceutical Affairs Law classification Class1,2) | (9) Military equipment |
| (4) Power-generation control equipment | (10) Electric heating apparatus, burning equipment |
| (5) Atomic energy-related equipment | (11) Disaster prevention/crime prevention equipment |
| (6) Seabed equipment | (12) Safety equipment |
| | (13) Other applications that are not considered general-purpose applications |

When designing your equipment involving the Products, you are kindly requested to take into consideration securing protection circuit/equipment or providing backup circuits, etc. in your equipment, to ensure higher safety.

2. We may modify products or discontinue production of a product listed in this catalog without prior notification.
3. We provide "Delivery Specification" that explain precautions for the specifications and safety of each product listed in this catalog. We strongly recommend that you exchange these delivery specifications with customers that use one of these products.
4. If you plan to export a product listed in this catalog, keep in mind that it may be a restricted item according to the "Foreign Exchange and Foreign Trade Control Law". In such cases, it is necessary to acquire export permission in harmony with this law.
5. Any reproduction or transferring of the contents of this catalog is prohibited without prior permission from our company.
6. We are not responsible for problems that occur related to the intellectual property rights or other rights of our company or a third party when you use a product listed in this catalog. We do not grant license of these rights.
7. This catalog only applies to products purchased through our company or one of our company's official agencies. This catalog does not apply to products that are purchased through other third parties.

3-terminal filters

For automotive general use



Overview of the YFF-AC series

SERIES OVERVIEW

YFF-AC series for automotive general use is a surface-mounted component, which has a feed-through structure that direct current passes inside the component. The structure makes a distance to GND short, and a parallel effect of the GND electrodes reduces ESL.

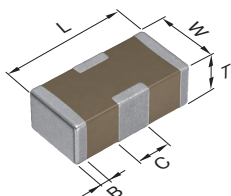
FEATURES

- Reduction in ESR/ESL and impedance due to the feed-through structure
- Superior attenuation characteristic in wide bandwidth
- Contributes to reduction in the number of decoupling MLCCs
- Qualified based on AEC-Q200

APPLICATION

- EMC countermeasures and decoupling use in power lines for automotive applications such as ADAS, autonomous driving system ECU

SHAPE & DIMENSIONS

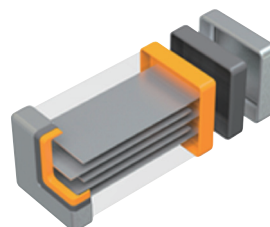


L	Body length
W	Body width
T	Body height
B	Terminal width
C	GND Terminal width

* Please refer to P-5, 7, 9 for details of each dimension.

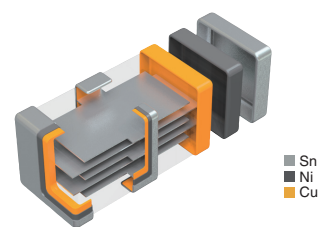
PRODUCT STRUCTURE

MLCC



Internal electrodes are not conducting between terminal electrodes

YFF series




Feed-through structure that direct current passes inside the component

○ RoHS Directive Compliant Product: See the following for more details. <https://product.tdk.com/en/environment/rohs/index.html>

⚠ Please be sure to request delivery specifications that provide further details on the features and specifications of the products for proper and safe use. Please note that the contents may change without any prior notice due to reasons such as upgrading.

CATALOG NUMBER CONSTRUCTION

YFF	21	AC	1A	475	M	T	0Y		N
(1)	(2)	(3)	(4)	(5)	(6)	(7)	(8)	(9)	(10)

(1) Series

(2) Dimensions L x W (mm)

Code	EIA	Length	Width	Terminal width
15	0402	1.00	0.50	0.18
18	0603	1.60	0.80	0.25
21	0805	2.00	1.25	0.30

(3) Product internal code

Symbol	Description
AC	For automotive general use

(4) Rated voltage (DC)

Code	Voltage (DC)
0G	4V
0J	6.3V
1C	16V
1E	25V
1H	50V

(5) Nominal capacitance (pF)

The capacitance is expressed in three digit codes and in units of pico Farads (pF). The first and second digits identify the first and second significant figures of the capacitance. The third digit identifies the multiplier. R designates a decimal point.

(Example) 101 = 100pF
 222 = 2,200pF
 105 = 1,000,000pF = 1.0μF

(6) Capacitance tolerance

Code	Tolerance
M	±20%

(7) Packaging style

Code	Style
T	Taping

(8) Internal code

Code	Description
0Y	TDK internal code
0Q	TDK internal code

(9) Reel size (mm)

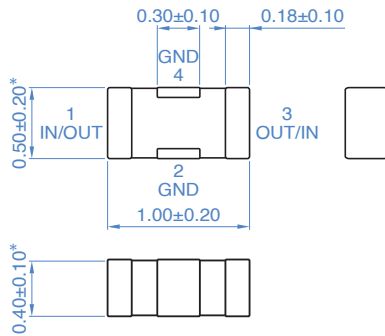
Code	Size
0	ø178
9	ø330

(10) Internal electrode

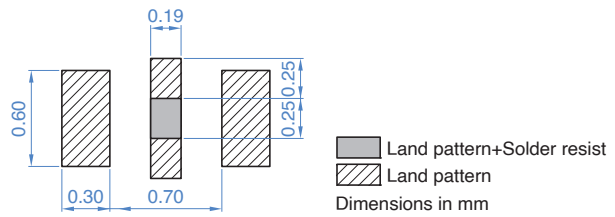
Code	Description
E, N	Ni

YFF-AC series YFF15AC type (Feed through filter)

SHAPE & DIMENSIONS



RECOMMENDED LAND PATTERN



* Make sure to connect GND terminals of a component and GND of a circuit board by using such as through-holes so that the distance between them becomes the shortest.

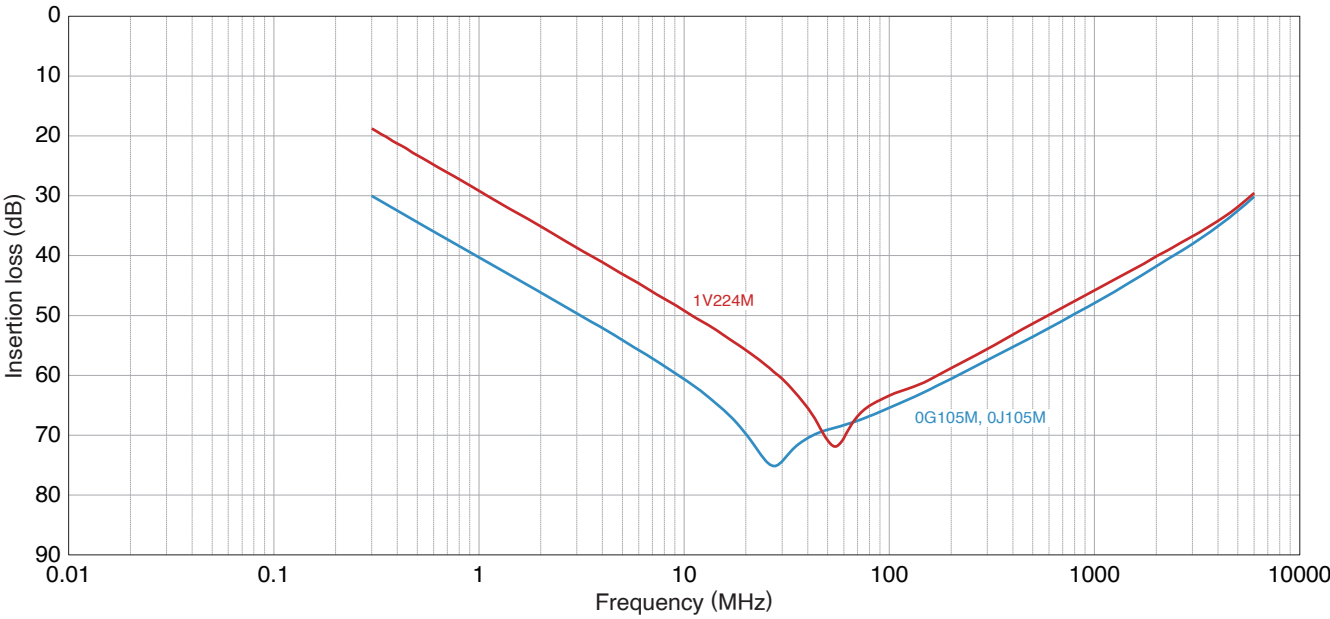
ELECTRICAL CHARACTERISTICS

CHARACTERISTICS SPECIFICATION TABLE

Insertion loss	Rated voltage	Rated current	Operating temperature range	Storage temperature range	Part No.
40dB bandwidth (MHz)	Edc (V)	Idc (A)	(°C)	(After mount) (°C)	
1 to 2400	4	2	-55 to +125	-55 to +125	YFF15AC0G105MT0Q0N
1 to 2400	6.3	2	-55 to +125	-55 to +125	YFF15AC0J105MT0Q0E
4 to 2000	35	2	-55 to +125	-55 to +125	YFF15AC1V224MT0Y0N

YFF-AC series YFF15AC type (Feed through filter)

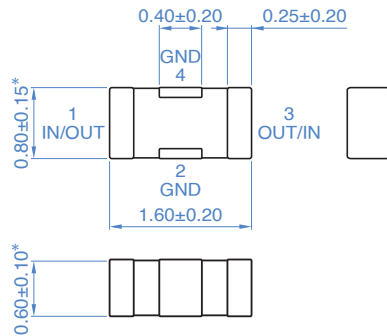
■ INSERTION LOSS VS. FREQUENCY CHARACTERISTICS



YFF-AC series

YFF18AC type (Feed through filter)

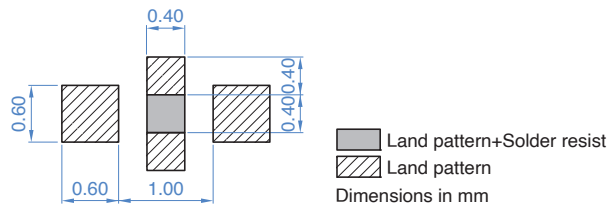
SHAPE & DIMENSIONS



* Apply 0.80 ± 0.20 to YFF18AC0G475MT0Y0E

Make sure to connect GND terminals of a component and GND of a circuit board by using such as through-holes so that the distance between them becomes the shortest.

RECOMMENDED LAND PATTERN



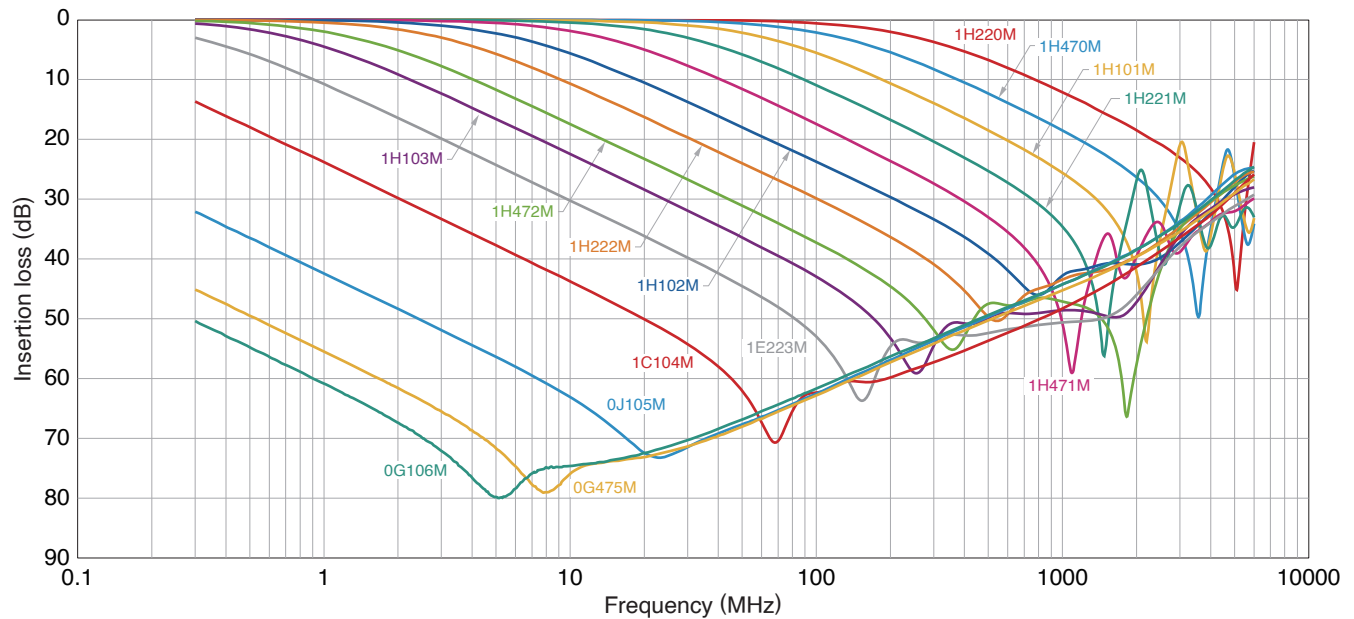
ELECTRICAL CHARACTERISTICS

CHARACTERISTICS SPECIFICATION TABLE

Cutoff	Insertion loss	Rated voltage	Rated current	Operating temperature range	Storage temperature range	Part No.
Frequency (MHz)	30dB bandwidth (MHz)	Edc (V)	Idc (A)	(°C)	(After mount) (°C)	
0.3	to 4000	4	4	-55 to +125	-55 to +125	YFF18AC0G106MT0YHE
0.3	to 4500	4	4	-55 to +125	-55 to +125	YFF18AC0G475MT0Y0E
0.3	to 3500	6.3	2	-55 to +125	-55 to +125	YFF18AC0J105MT0Y0E
0.3	to 3500	10	2	-55 to +125	-55 to +125	YFF18AC1A105MT0Y0E
2	to 4500	16	1	-55 to +125	-55 to +125	YFF18AC1C104MT0Y0N
0.3	10 to 5500	25	1	-55 to +125	-55 to +125	YFF18AC1E223MT0Y0N
0.7	30 to 4500	50	1	-55 to +125	-55 to +125	YFF18AC1H103MT0Y0N
1	50 to 4000	50	1	-55 to +125	-55 to +125	YFF18AC1H472MT0Y0N
2	200 to 4000	50	1	-55 to +125	-55 to +125	YFF18AC1H222MT0Y0N
5	300 to 4500	50	1	-55 to +125	-55 to +125	YFF18AC1H102MT0Y0N
10	400 to 5500	50	1	-55 to +125	-55 to +125	YFF18AC1H471MT0Y0N
20	800 to 1500	50	1	-55 to +125	-55 to +125	YFF18AC1H221MT0Y0N
60	1500 to 2500	50	1	-55 to +125	-55 to +125	YFF18AC1H101MT0Y0N
100	2500 to 4000	50	1	-55 to +125	-55 to +125	YFF18AC1H470MT0Y0N
200	4500 to 5500	50	1	-55 to +125	-55 to +125	YFF18AC1H220MT0Y0N

YFF-AC series YFF18AC type (Feed through filter)

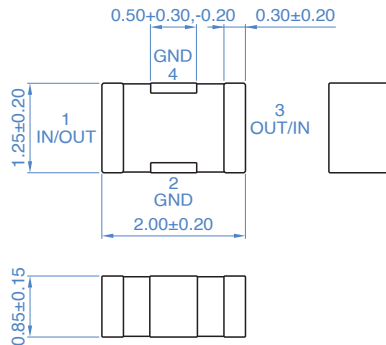
■ INSERTION LOSS VS. FREQUENCY CHARACTERISTICS



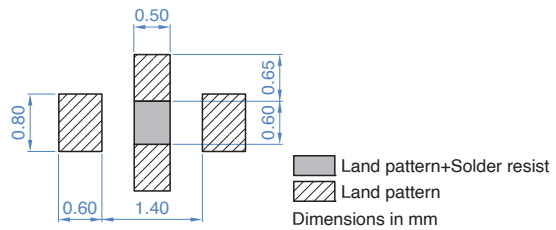
YFF-AC series

YFF21AC type (Feed through filter)

SHAPE & DIMENSIONS



RECOMMENDED LAND PATTERN



* Make sure to connect GND terminals of a component and GND of a circuit board by using such as through-holes so that the distance between them becomes the shortest.

ELECTRICAL CHARACTERISTICS

CHARACTERISTICS SPECIFICATION TABLE

Cutoff	Insertion loss	Rated voltage	Rated current	Operating temperature range	Storage temperature range	Part No.
Frequency (MHz)	30dB bandwidth (MHz)	E _{dc} (V)	I _{dc} (A)	(°C)	(After mount) (°C)	
	0.3 to 3000	10	4	-55 to +125	-55 to +125	YFF21AC1A475MT0Y0N
	0.4 to 3000	16	1	-55 to +125	-55 to +125	YFF21AC1C474MT0Y0N
	2 to 3000	25	1	-55 to +125	-55 to +125	YFF21AC1E104MT0Y0N
	5 to 3000	25	1	-55 to +125	-55 to +125	YFF21AC1E473MT0Y0N
	10 to 2000	25	1	-55 to +125	-55 to +125	YFF21AC1E223MT0Y0N
0.5	30 to 1000	25	0.4	-55 to +125	-55 to +125	YFF21AC1E103MT0Y0N
1	50 to 2000	50	0.4	-55 to +125	-55 to +125	YFF21AC1H472MT0Y0N
2	100 to 2000	50	0.4	-55 to +125	-55 to +125	YFF21AC1H222MT0Y0N
5	300 to 3000	50	0.4	-55 to +125	-55 to +125	YFF21AC1H102MT0Y0N
10	400 to 1000	50	1	-55 to +125	-55 to +125	YFF21AC1H471MT0Y0N
20	800 to 1000	50	1	-55 to +125	-55 to +125	YFF21AC1H221MT0Y0N
50	2000 to 2000	50	1	-55 to +125	-55 to +125	YFF21AC1H101MT0Y0N
100	3000 to 3000	50	1	-55 to +125	-55 to +125	YFF21AC1H470MT0Y0N
200	4000 to 5000	50	1	-55 to +125	-55 to +125	YFF21AC1H220MT0Y0N

YFF-AC series YFF21AC type (Feed through filter)

■ INSERTION LOSS VS. FREQUENCY CHARACTERISTICS

