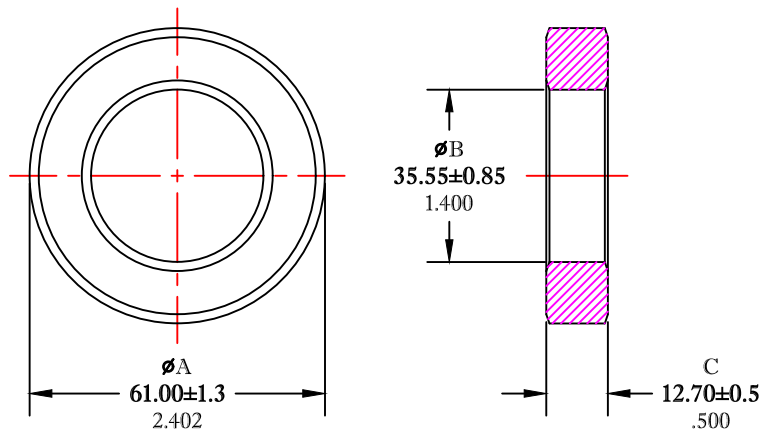


** Not all features are shown in this drawing. For more detailed information, please contact your Fair-Rite representative.

UNCONTROLLED ~CATALOG~ DRAWING

SIZE	PART NO.	REV.
B	5978003801	~



DIMENSIONS
BOLD NUMBERS ARE IN MILLIMETERS
 LIGHT NUMBERS ARE IN INCHES

ELECTRICAL SPECIFICATIONS						
$\Sigma l/A(\text{mm}^{-1})$	l_e (mm)	A_e (mm ²)	V_e (mm ³)	L_o (nH)	A_L (nH) @ 10 kHz <10gauss	$\tan \delta/\mu$ @ 100 kHz <1gauss
0.91786	145	157	22751	1.369	3155±25%	≤15X10E-6

NOTES:

- 1 - BURNISH TO BREAK SHARP EDGES.
- 2 - ELECTRICAL TESTING TO BE PERFORMED AS PER FAIR-RITE PRODUCTS CORP. SOP# ELC-45.

FR# 78

FAIR-RITE PRODUCTS CORP.					
TITLE TOROID					
DRAWN BY J.SERENCIS	DATE 07-17-2018	SIZE	PART NO.	REV.	
CHKD BY		B	5978003801	~	
APPRVD BY		SCALE	NONE	SHEET 1 of 1	