

Absolute Maximum Ratings

Rating	Value	Units
Input Power Level	20	dBm
DC Voltage	0	VDC
Specification Temperature Range	-40 to +85	°C
Storage Temperature Range	-40 to +85	°C
Moisture Sensitivity Level: 3		
Symbolization: 16J Package size: SMD 1.4 x 1.1 mm		

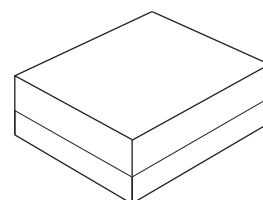
Electrical Characteristics

Terminating source impedance (single): $Z_s = 50 \Omega$

Terminating load impedance (single): $Z_L = 50 \Omega$

SF2735K

**925 MHz
SAW Filter**



SM1411-5

Item	Unit	Min.	Typ.	Max.	Note
Center Frequency F_c	MHz	-	925	-	-
Insertion Loss (922.5 ~ 927.5 MHz) @ 25°C IL	dB	-	2.8	3.5	-
VSWR S11/S22 (922.5 ~ 927.5 MHz)		-	1.4	2	-
Attenuation (reference level from 0 dB)					
10~710 MHz	dB	35	40	-	-
710~900 MHz	dB	34	40	-	-
900~908 MHz @ 25°C	dB	30	33	-	-
930~932 MHz @ 25°C	dB		6	-	-
932~935 MHz @ 25°C	dB	7	20	-	-
935~945 MHz	dB	15	20	-	-
945~960 MHz	dB	35	40	-	-
960~1000 MHz	dB	35	40	-	-
1000~1215 MHz	dB	35	40	-	-
1215~2000 MHz	dB	30	35	-	-
2000~3600 MHz	dB	30	35	-	-

* Typical values are based on average measurements at +25°C

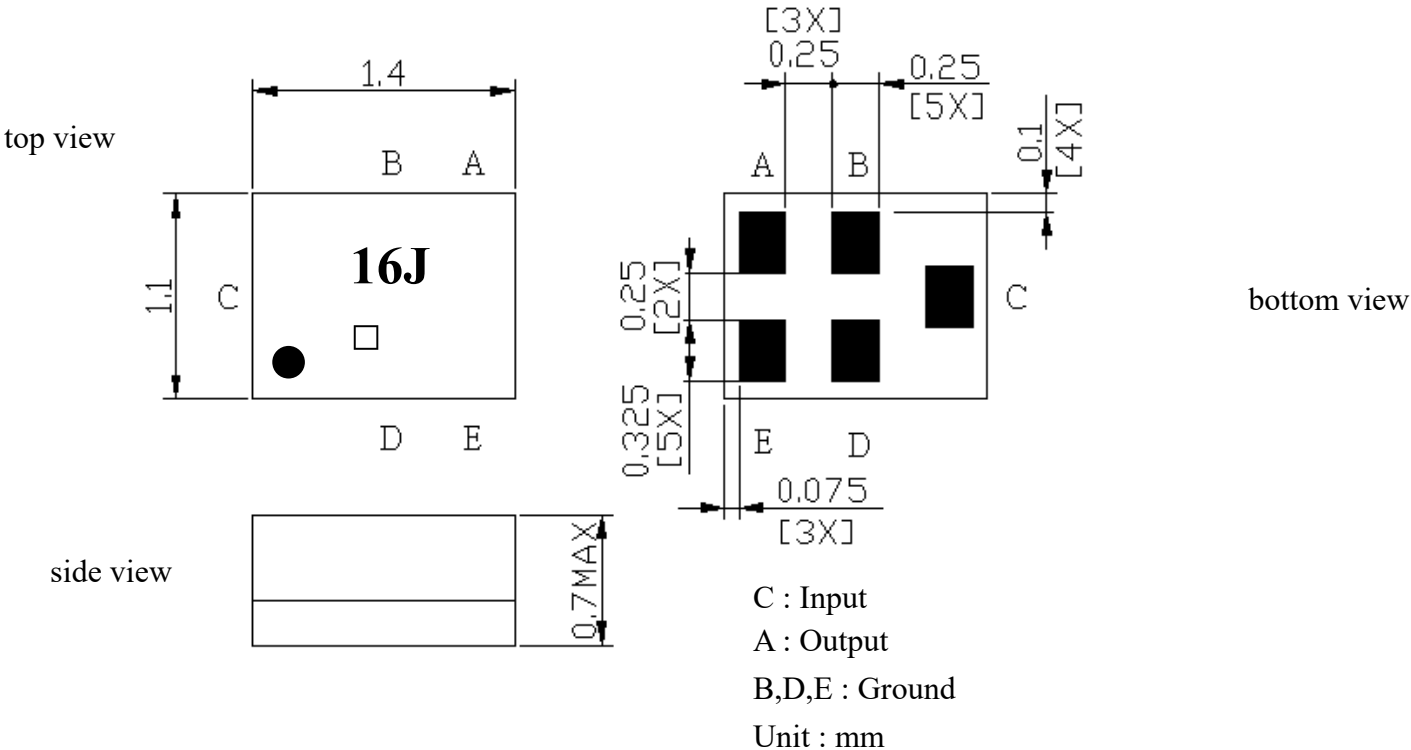


CAUTION: Electrostatic Sensitive Device. Observe precautions for handling.

NOTES:

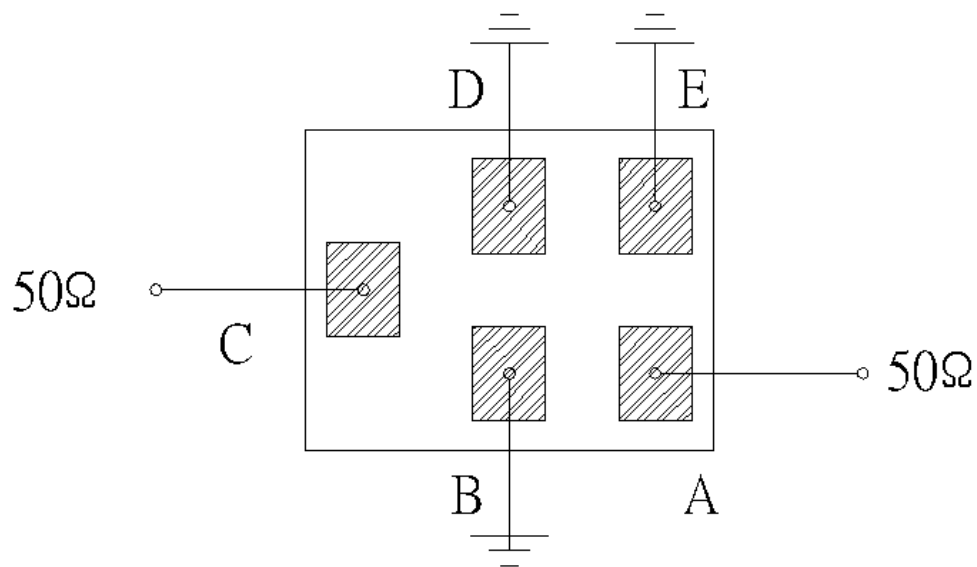
1. The design, manufacturing process, and specifications of this device are subject to change.
2. US or International patents may apply.
3. RoHS compliant from the first date of manufacture.

Outline Drawing

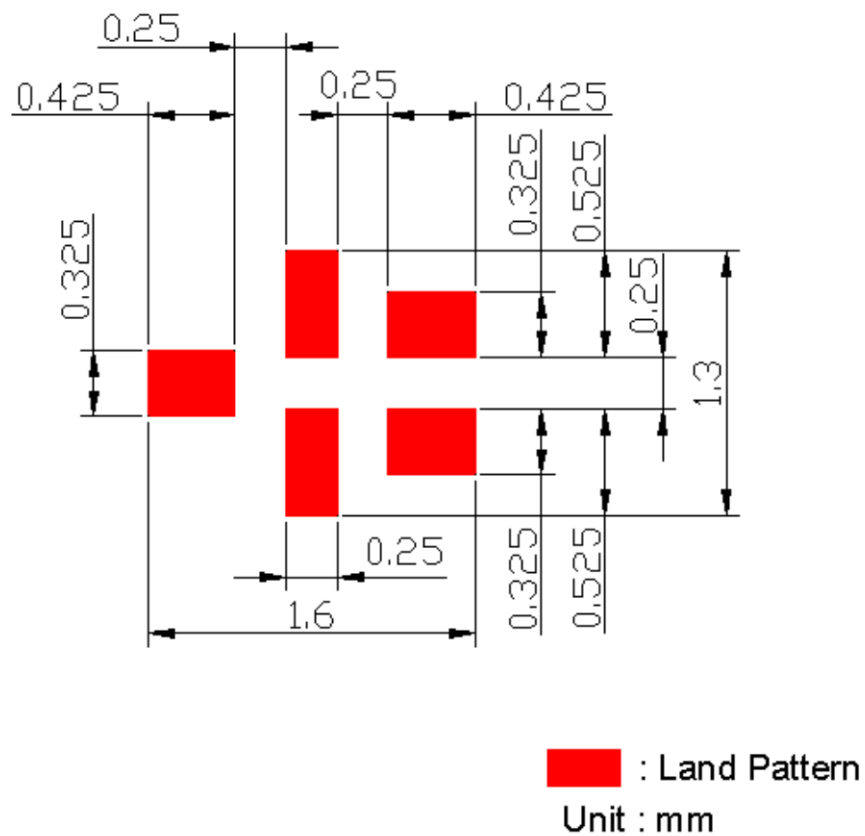


Marking:
16J (assigned by manufacturer)
□ : Year/Month Code

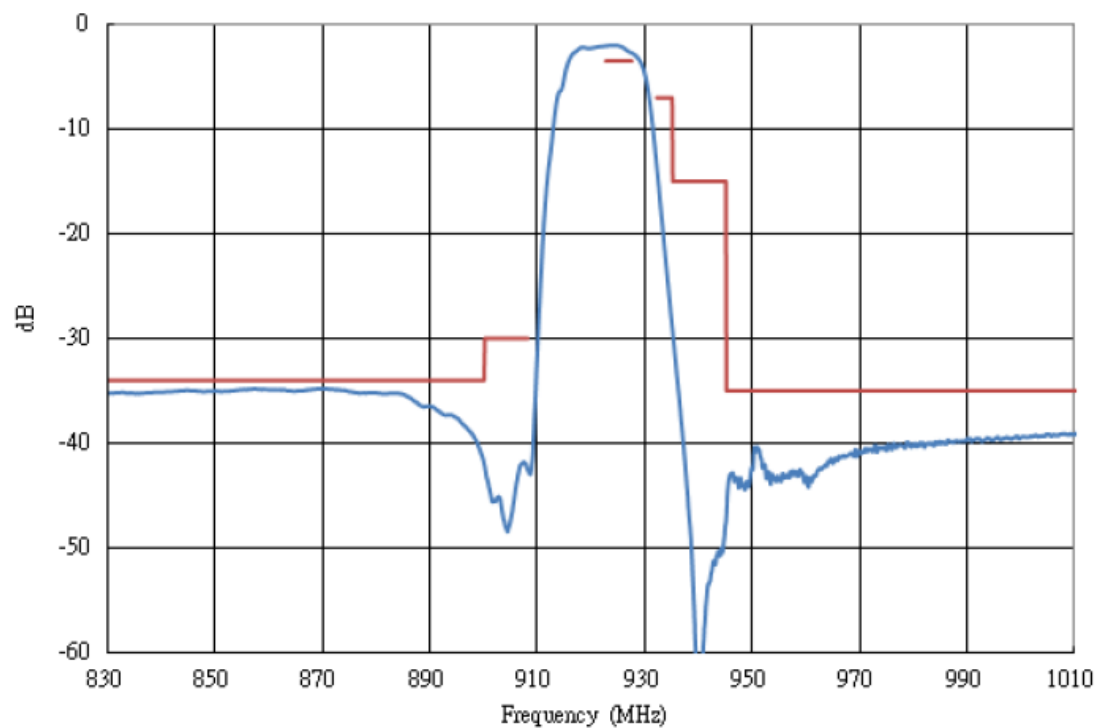
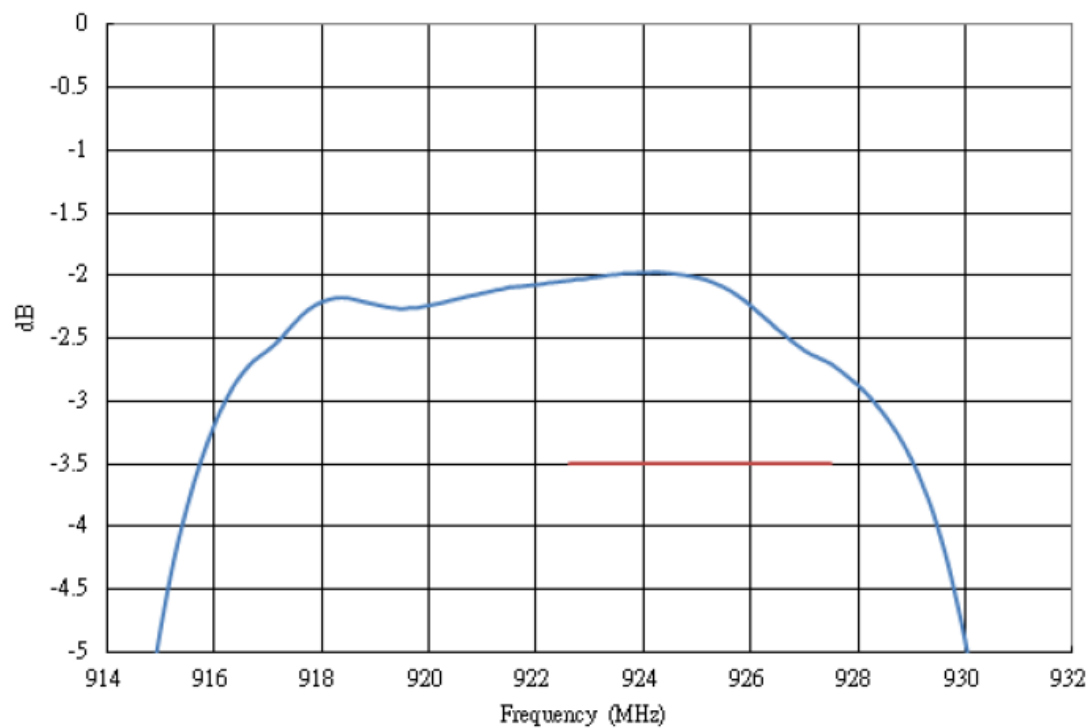
Measurement Circuit



PCB Footprint



Frequency Characteristics

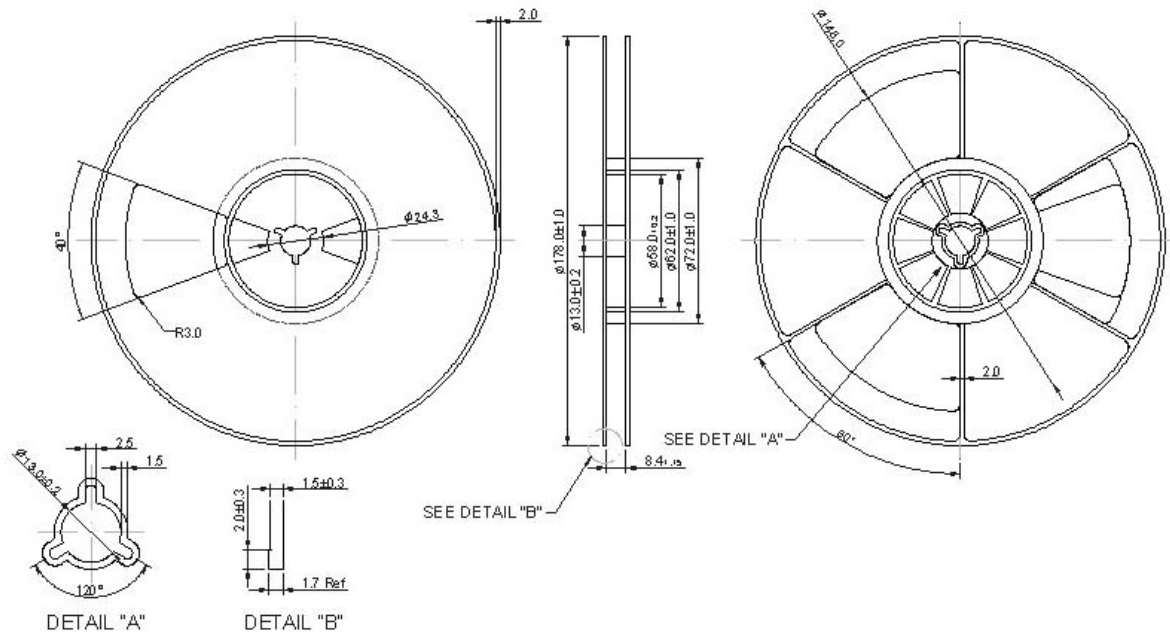


Packing

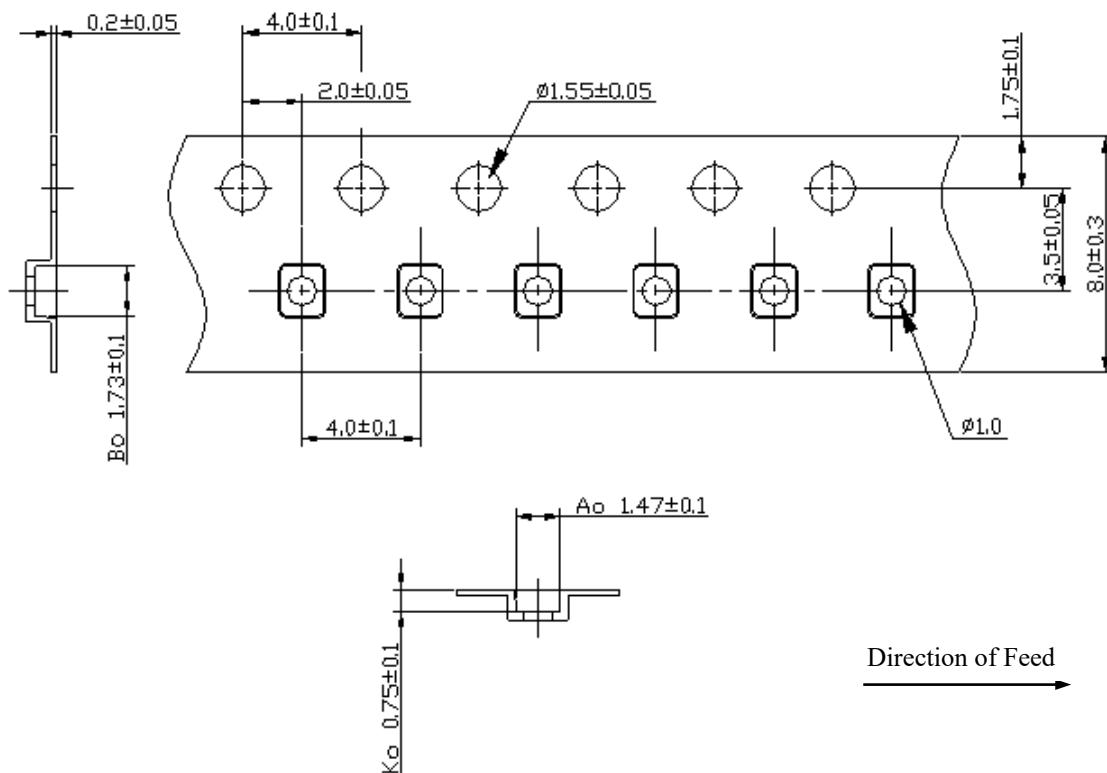
Reel Dimension

Reel Count:
7" = 3000

Tape and Reel Standard per ANSI/EIA-481



Tape Dimensions:



1. Preheating shall be fixed at 150~180°C for 60~90 seconds.
2. Ascending time to preheating temperature 150°C shall be 30 seconds min.
3. Heating shall be fixed at 220°C for 50~80 seconds and at 260°C+0/-5°C peak (20~40sec).
4. Time: 2 times.

