

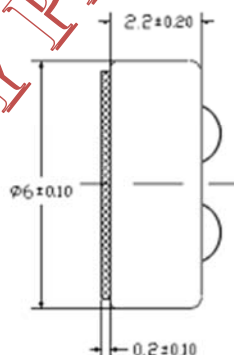
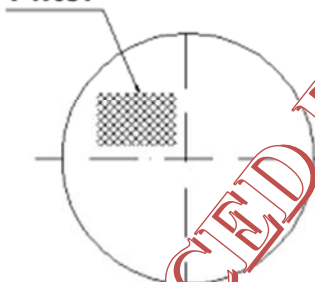
May not be suitable for all Medical and Aerospace applications.

Contact Mallory Sonalert to discuss your application.

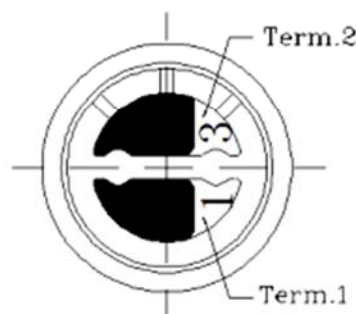
Sensitivity Range	-42 ± 3 dB $R_L = 2.2$ k Ω $V_{CC} = 2.0$ V (1 kHz 0 dB = 1 V/1 μ A)
Impedance	Max. 2.2k Ω 1 kHz $R_{in} = 2.2$ k Ω)
Frequency	20 - 16000 Hz
Current Consumption	Max. 1 μ A
Operating Voltage Range	1.0 - 10 V
Max SPL (dB)	120 dB
S/N Ratio	more than 58 dB
Sensitivity Reduction	2.0 - 1.5 V Variation less than 3 dB
Storage Condition	-45 ~ +75°C; R.H. < 90%
Operating Condition	-10 ~ +45°C; R.H. < 90%
Weight (g)	0.3
Options	For other options contact factory

Dimensions: (units: mm)

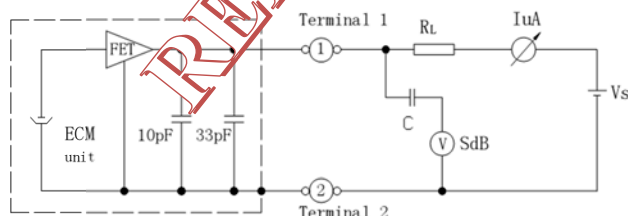
Filter



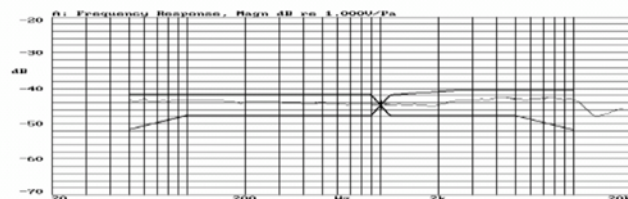
ROHS Compliant



Schematic Diagram:



Typical Frequency Response Curve:



Packaging:

Bulk pack in quantities of 200pcs.