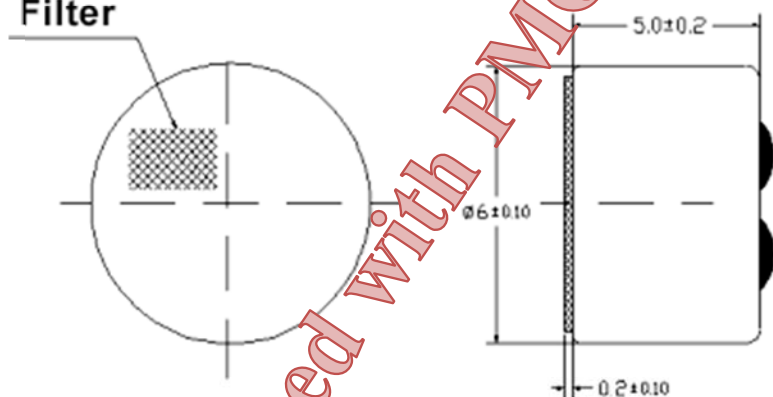
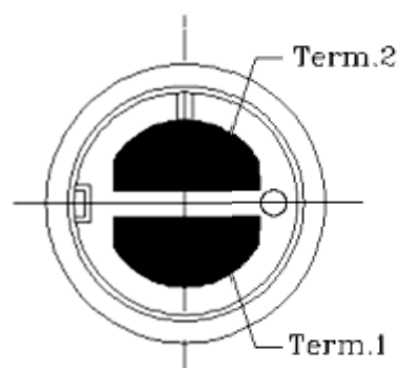
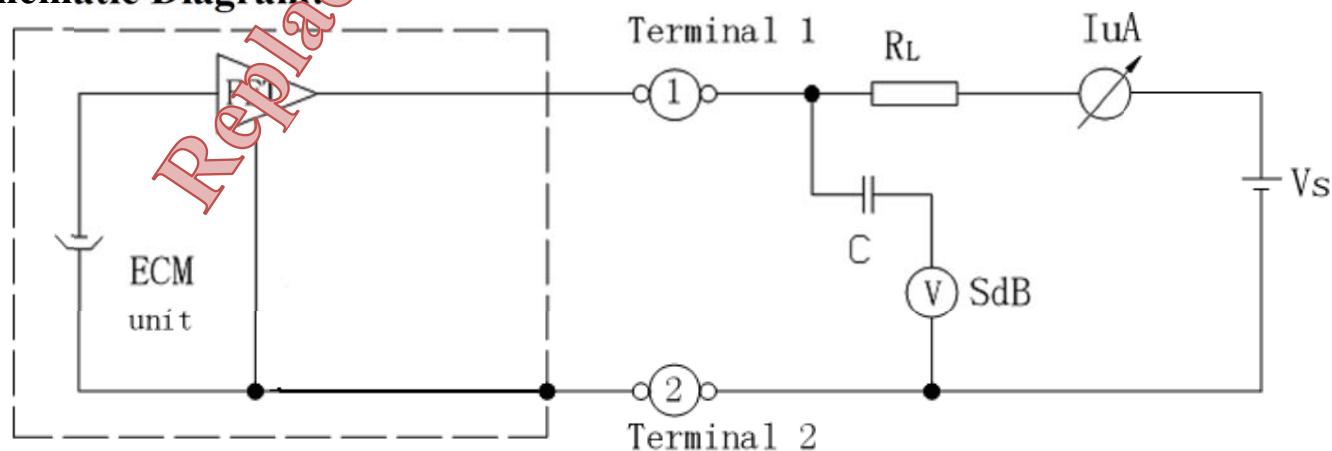


**May not be suitable for all Medical and Aerospace applications.  
Contact Mallory Sonalert to discuss your application.**

Sensitivity Range	$-44 \pm 3$ dB $R_L = 2.2$ k $\Omega$ $V_{CC} = 2.0$ V (1 kHz 0 dB = 1 $\mu$ Pa)
Impedance	Max. 2.2k $\Omega$ 1 kHz $R_L = 2.2$ k $\Omega$ )
Frequency	20 - 16000 Hz
Current Consumption	Max. 1.5 mA
Operating Voltage Range	1 - 10 V
Max SPL (dB)	120 dB
S/N Ratio	More than 58 dB
Sensitivity Reduction	2.0 - 1.5 V Variation less than 3 dB
Storage Condition	-20 ~ +60°C; R.H. < 45% ~ 75%
Operating Condition	-10 ~ +45°C; R.H. < 85%
Weight (g)	0.5
Options	For other options contact factory

**Dimensions:** (units: mm)**Filter****ROHS Compliant****Schematic Diagram****Packaging:** Bulk pack in quantities of 100pcs.