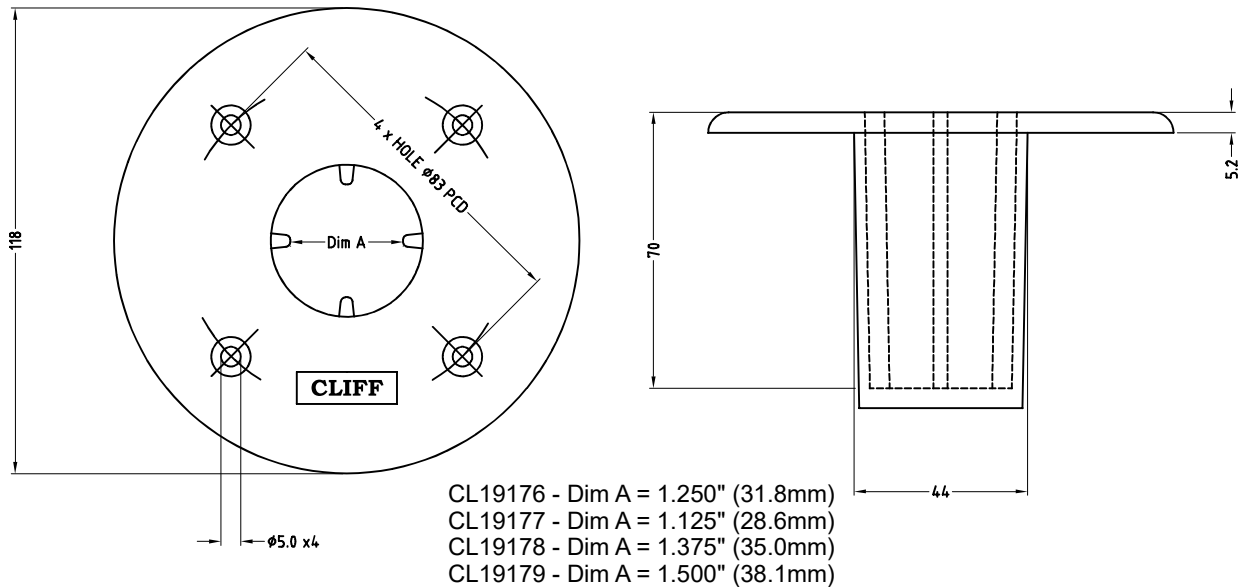


CLIFF

TOP HAT MOUNTING PLATES

Designed for fixing into the bottom of speaker cabinets or lighting assemblies to enable these enclosures to be mounted onto stands. Made from reinforced nylon, with a similar performance to metal but with a much lower cost. 4 moulded ribs inside cavity determines bore size. Load strength > 500 Kg.



CL19176 - Dim A = 1.250" (31.8mm)
CL19177 - Dim A = 1.125" (28.6mm)
CL19178 - Dim A = 1.375" (35.0mm)
CL19179 - Dim A = 1.500" (38.1mm)

VARIANTS

CL19176 - 1.250" (31.8mm) TOP HAT TH1
CL19177 - 1.125" (28.6mm) TOP HAT TH2
CL19178 - 1.375" (35.0mm) TOP HAT TH3
CL19179 - 1.500" (38.1mm) TOP HAT TH4