

15 1502 08

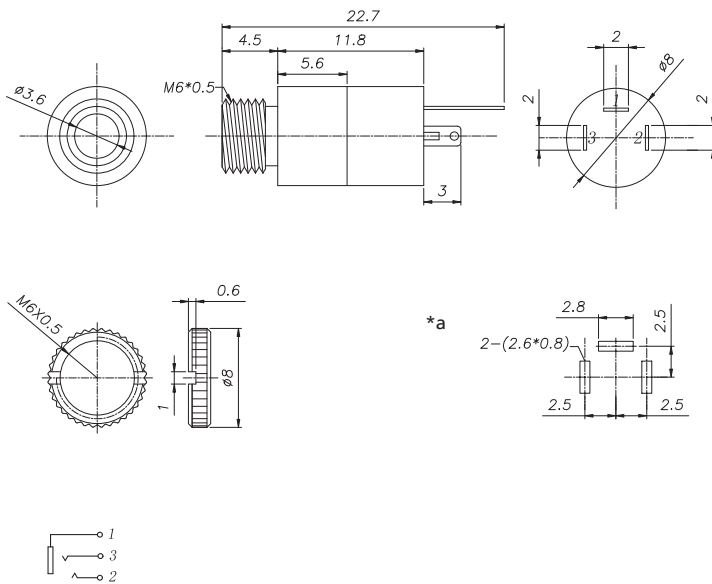
Jack connectors



Jack chassis socket acc. to JIS C 6560 JC35J3A, 3.5 mm, 3 poles/stereo, with solder eyes, for printed circuit boards, for back side mounting

15

1502 08



*a printed circuit board layout

Environmental conditions

Temperature range -20 °C/+70 °C

Materials

Insulating body PBT, V-0 according to UL94
Contact CuSn/CuZn, silver-plated/tin-plated
Housing CuZn, nickel-plated
Knurled nut CuZn, nickel-plated

Mechanical data

Mating cycles 5000
Insertion force 3–30 N
Withdrawal force 3–30 N
Tightening torque nut ≤ 0.19 Nm

Electrical data (at T_{amb} 20 °C)

Contact resistance ≤ 30 mΩ
Rated current 1 A
Rated voltage 34 V
Rated impulse voltage 500 V/60 s
Insulation resistance ≥ 100 MΩ

Associated products

Counterparts
☞ 1532 07 ☞ 1532 10 ☞ KLS 40
☞ KLS 44 ☞ WKLS 40

15

1502 08

Designation	Pole Number	PU (Pieces)	MDQ (Pieces)
1502 08	3	500	1000

Packaging:

in bulk, in a cardboard box or a plastic bag