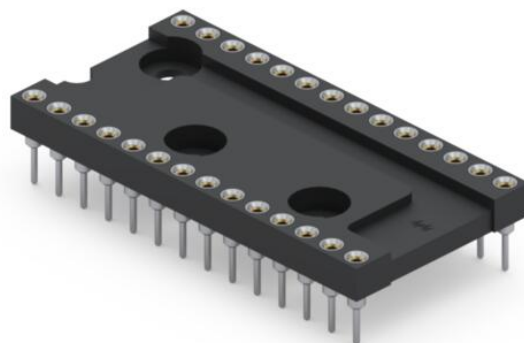
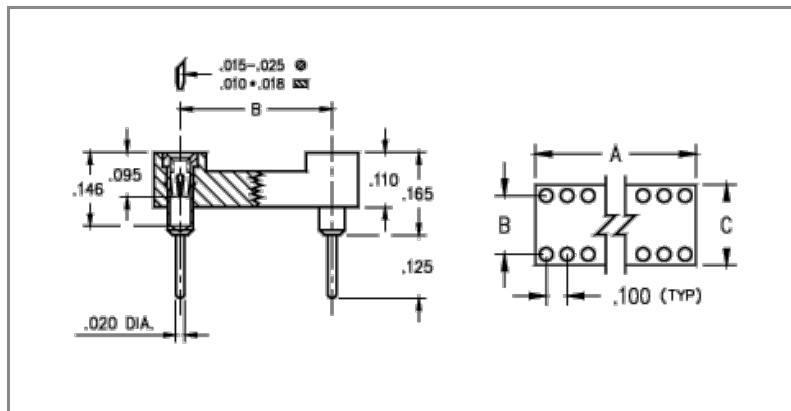




PRODUCT NUMBER: 210-83-628-41-001000

www.mill-max.com  
DATA SHEET



## 210-83-628-41-001000- SPECIFICATIONS

General Info	
Description <sup>1</sup> :	Standard Solder Tail
# Pins:	28
RoHS:	No

Materials	
Shell Plating:	300 $\mu$ " (60/40) Tin/Lead over 50 $\mu$ " Nickel
Inner Plating:	30 $\mu$ " Gold MIN.
Loose Pin/Receptacle Used:	1001 (Brass Alloy)
Insulator Material:	PCT

Technical Specs
-----------------

## NOTES:

### 1. Standard Tolerances:

Assembly tolerance:  $\pm .010$ " (.25mm)

Insulator length:  $\pm .005$  (.13mm)

Insulator width:  $\pm .005$  (.13mm)

Insulator height:  $\pm .005$  (.13mm)

Pin Length:  $\pm .005$  (.13mm)

Pin Diameter:  $\pm .002$  (.051mm)

Pin Angle:  $\pm 2^\circ$

Co-planarity of SMT connectors: .005" (.13mm) up to 1" (25.4mm) in connector length

Insulator Flatness: .005" (.13mm) up to 1" (25.4mm) in connector length

## ADDITIONAL NOTES AND SPECIFICATIONS

In the interest of improved design, quality and performance, Mill-Max reserves the right to make changes in its specifications without prior notice. Specifications and tolerances are provided wherever possible. The tolerance on dimensions of critical to function features is typically held tighter than the stated standard tolerances, such as press-fits, holes and lengths affecting the coplanarity of SMT products. Due to the wide variety of interconnects Mill-Max offers, the specific tolerances vary from product to product. If you need information regarding the tolerance of a particular part, please contact Technical Services.

## RELATED LINKS AND DOCUMENTS

Environmental Compliance: ( <https://www.mill-max.com/rohs> )