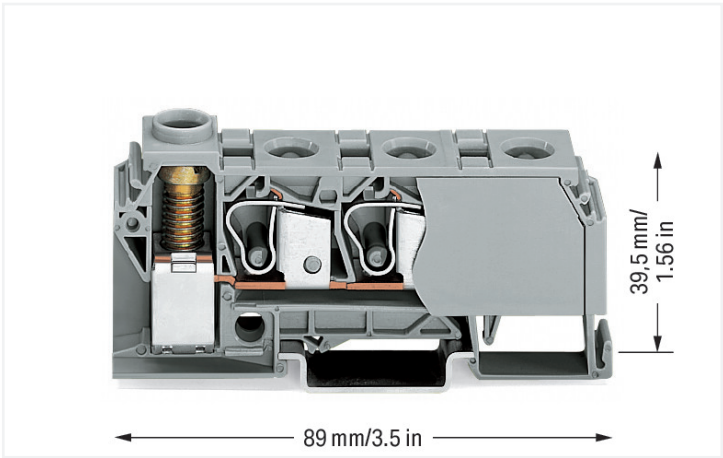


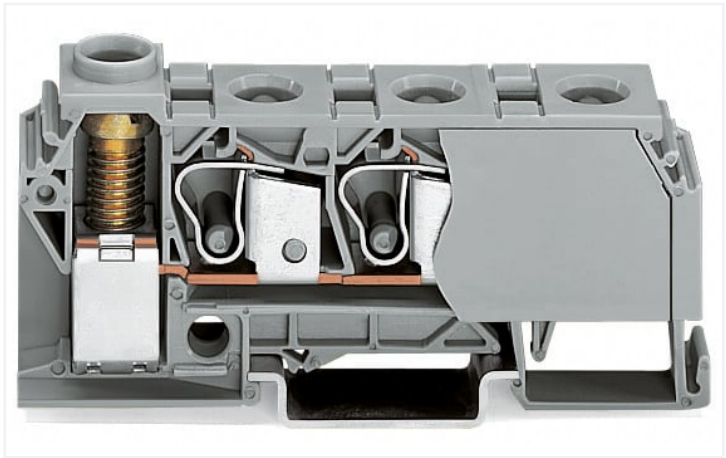
Data Sheet | Item Number: 284-621

Distribution terminal block; 10 mm²; lateral marker slots; for DIN-rail 35 x 15 and 35 x 7.5; screw-type and CAGE CLAMP® connection; 3 x CAGE CLAMP® connection 10 mm²; 1 x screw-clamp connection 35 mm²; 10,00 mm²; gray

<https://www.wago.com/284-621>



Color: ■ gray



Electrical data

Ratings per IEC/EN	
Nominal voltage (III/3)	800 V
Rated impulse voltage (III/3)	8 kV
Rated current	125 A
Legend (ratings)	(III / 3) ≙ Overvoltage category III / Pollution degree 3

Power Loss	
Power loss, per pole (potential)	8.75 W
Rated current I _N for specified power loss	125 A
Resistance value for specified, current-dependent power loss	0.00056 Ω

Connection data

Connection points	4
Total number of potentials	1
Number of levels	1

Connection 1	
Connection technology	CAGE CLAMP®
Number of connection points	3
Actuation type	Operating tool
Connectable conductor materials	Copper
Solid conductor	0.2 ... 10 mm² / 24 ... 8 AWG
Fine-stranded conductor	0.2 ... 10 mm² / 24 ... 8 AWG
Strip length	12 ... 14 mm / 0.47 ... 0.55 inches
Wiring direction	Front-/side-entry wiring

Connection 2	
Connection technology 2	Screw connection
Number of connection points 2	1
Solid conductor 2	0.5 ... 35 mm² / 10 ... 2 AWG
Fine-stranded conductor 2	6 ... 35 mm² / 10 ... 2 AWG



Physical data	
Width	17.5 mm / 0.689 inches
Height	89 mm / 3.504 inches
Depth from upper-edge of DIN-rail	39.5 mm / 1.555 inches





Mechanical data	
Design	horizontal type
Mounting type	DIN-35 rail
Marking level	Side marking
Torque	3.5 Nm

Material data	
Note (material data)	Information on material specifications can be found here
Color	gray
Material group	I
Insulation material	Polyamide (PA66)
Flammability class per UL94	V0
Fire load	0.633 MJ
Weight	55.5 g

Environmental requirements	
Processing temperature	-35 ... +85 °C
Continuous operating temperature	-60 ... +105 °C

Commercial data	
eCl@ss 10.0	27-14-11-20
eCl@ss 9.0	27-14-11-20
ETIM 8.0	EC000897
ETIM 7.0	EC000897
PU (SPU)	15 pcs
Packaging type	Box
Country of origin	IN
GTIN	4045454282561
Customs tariff number	85369010000

Environmental Product Compliance	
RoHS Compliance Status	Compliant, No Exemption

Approvals / Certificates		
General approvals		General approvals
   		UL Underwriters Laboratories Inc.
		UL 1059
		E45172
Approval	Standard	Certificate Name
CCA DEKRA Certification B.V.	EN 60947	2160584.03
CCA DEKRA Certification B.V.	EN 60947	NTR NL-7078
CSA CSA Group	C22.2	1536073



Declarations of conformity and manufacturer's declarations

Approval	Standard	Certificate Name
EU-Declaration of Confor- mity WAGO GmbH & Co. KG	-	-
UK-Declaration of Confor- mity WAGO GmbH & Co. KG	-	-

Approvals for marine applications



Approval	Standard	Certificate Name
DNV GL Det Norske Veritas, Ger- manischer Lloyd	-	TAE00001V2

Downloads

Environmental Product Compliance

Compliance Search
Environmental Product Compliance 284-621

Documentation

Additional Information
Technical Section

pdf
2240.62 KB



Bid Text
284-621
19.02.2019
xml 3.57 KB
284-621
19.09.2017
doc 24.50 KB



CAD/CAE-Data

CAD data
2D/3D Models 284-621

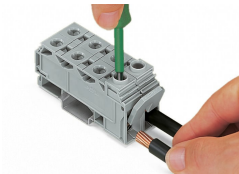
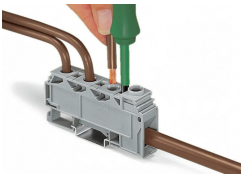
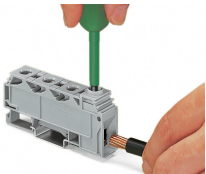


CAE data
EPLAN Data Portal 284-621
WSCAD Universe 284-621
ZUKEN Portal 284-621



Installation Notes

Conductor termination

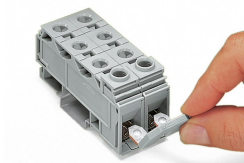


Terminating a 35 mm² (2 AWG) conductor.
Screw clamp connection, side-entry wi-
ring

Terminating a 10 mm² (8 AWG) conduc-
tor –
CAGE CLAMP® connection, front-entry
wiring

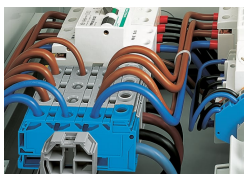
Connecting 35 mm² (2 AWG) conductors
to commoned terminal blocks.
Screw clamp connection, side-entry wi-
ring

Commoning



Commoning with comb-style jumper bar.
Individual arrangement: 125 A
Two jumpers combined in one clamping unit: 100 A

Application



Side-entry distribution terminal block with screw clamp connection (35 mm²/2 AWG) and front-entry CAGE CLAMP® connection (3 x 10 mm²/8 AWG) snaps onto DIN-35 rail – it is enclosed on both sides and requires no end or intermediate plate.

When connecting 3 x 10 mm² (8 AWG) conductors on the distribution side, make sure that the nominal current of 125 A is not exceeded.