

**Style**  
M8 Plug, shielded  
6 pin  
A-coding

**Ratings**  
Voltage: 30 V  
Current: 1 A

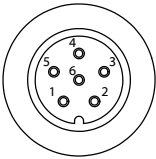
**Operating Temperature Range**  
-40~105 °C

**Materials**  
① Insulator: PA66, UL 94 HB, black  
② Pin: C3604 brass, gold flashing  
③ Nut: C3604 brass, nickel plated  
④ Shell: C3604 brass, nickel plated  
⑤ O-ring: Silicone rubber  
⑥ Epoxy: Epoxy resin

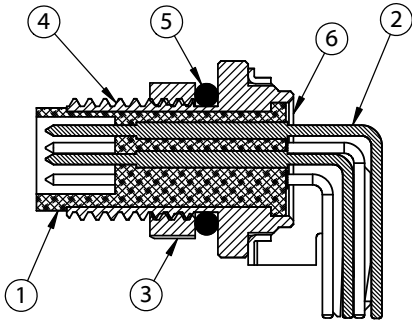
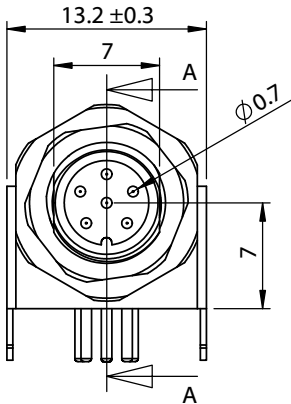
**Electrical Requirements**  
Dielectric strength: 1 min @ 500 Vac  
Insulation resistance: 100 MΩ @ 500 Vdc  
Contact resistance: 10 mΩ or less

**Mechanical Requirements**  
Life cycle: 1000 mating cycles minimum

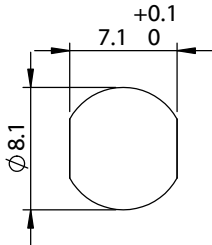
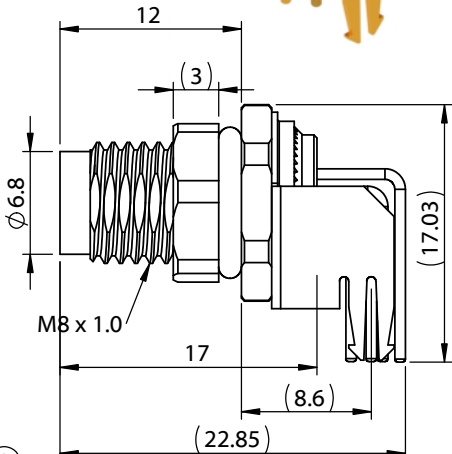
**Environmental Requirements**  
Salt spray test: 35 °C, relative humidity 90-95%, 5% NaCl mist for 24 hrs. Wash parts after test. Maintain mechanical requirements and a contact resistance of less than 10 mΩ.  
Waterproof: IP67 (in mated state). IP67 panel ingress requires sealing cap.



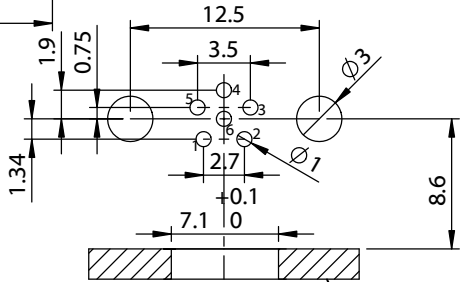
Front View  
Not to Scale



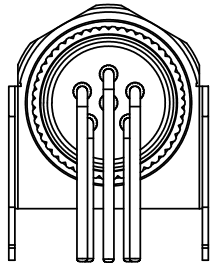
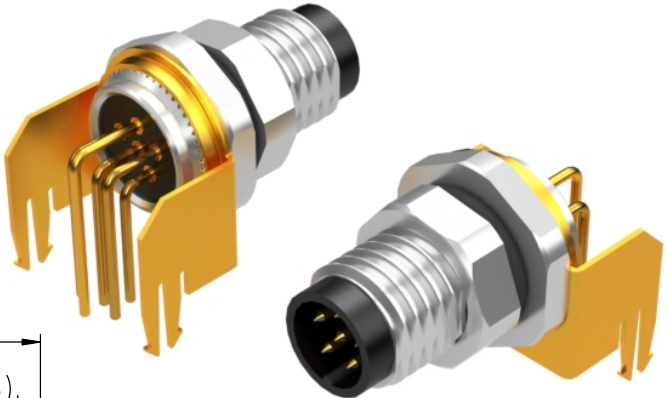
SECTION A-A



Panel Cut-Out



PCB Layout  
Panel Thickness  
2.0 ~ 3.0 mm



Revision:	Date:	Description:	Prepared:	Notes:	<b>TENSILITY</b> tel 1.541.323.3228 800 877.670.7118 fax 1.541.323.4202 web tensility.com	
A	12/30/22	Initial Release	Verified:	RoHS compliant Function test: no open, no short circuit, no intermittent		
			Dimensions are in millimeters. Tolerances: X: ± 0.3 mm X.X: ± 0.1 mm X.XX: ± 0.05 mm	Description:	Size:	Part number:
				Connector, M8 A-code plug, 6 pin, 8xL22.1 mm, panel mount, thru hole, 90°, board lock, gold plated, IP67	A	54-00320
					Scale: 2:1	Sheet 1 of 1