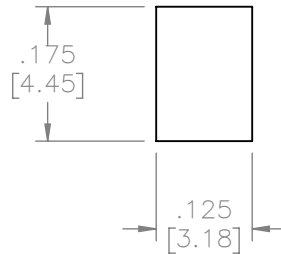
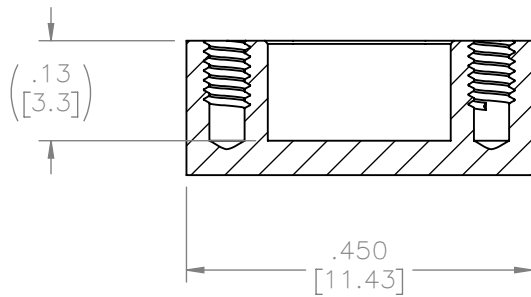
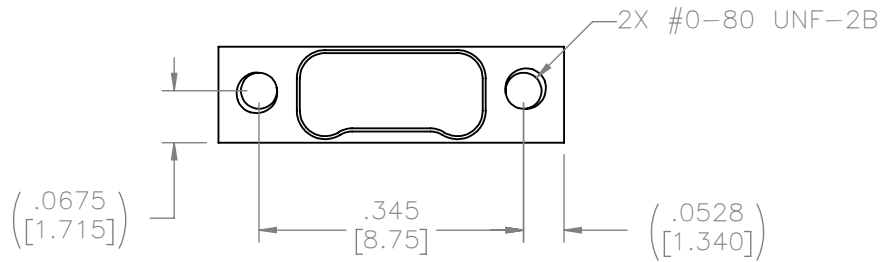


PART NO.	A42029-015	REV	ECO	DATE	APP
		A	99172	01-03-13	TLM



ACTUAL SIZE



NOTES:

1. MATERIAL: ALUMINUM ALLOY 6061-T6
2. ELECTROLESS NICKEL PER SAE-AMS-2404
3. DIMENSIONS IN [] ARE IN MILLIMETERS UNLESS OTHERWISE NOTED AND ARE FOR REFERENCE ONLY

SLDW	THIRD ANGLE
	-TOLERANCES-
	UNLESS OTHERWISE NOTED
	DIMENSIONS IN INCHES
	2 PL DEC±.01
	3 PL DEC±.005
	4 PL DEC±.0005
	ANGLES ± 1°

THIS DRAWING CONTAINS CONFIDENTIAL AND PROPRIETARY INFORMATION WHICH IS THE PROPERTY OF OMNETICS CONNECTOR CORP. THIS DOCUMENT MAY NOT, IN WHOLE OR IN PART, BE DUPLICATED, OR DISCLOSED FOR ANY PURPOSE, WITHOUT WRITTEN PERMISSION FROM OMNETICS CONNECTOR CORP.

DFTM. DGJ	DATE 11-01-12
CHK'D.	DATE
APP'D.	DATE

TITLE:

DUST COVER
MALE Bi-Lobe®
(15) POSITION

OMNETICS
CONNECTOR CORPORATION
7260 COMMERCE CIRCLE EAST
MINNEAPOLIS, MN 55432
WWW.OMNETICS.COM

CAGE CODE 61873	REV A
DWG NO. A42029-015	
SHEET 1 OF 1 SCALE: 4:1	