

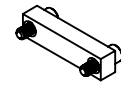
# MATERIALS

## HOUSING:

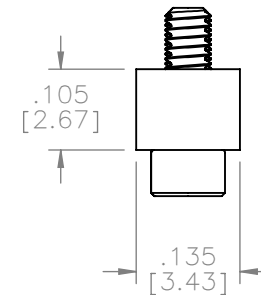
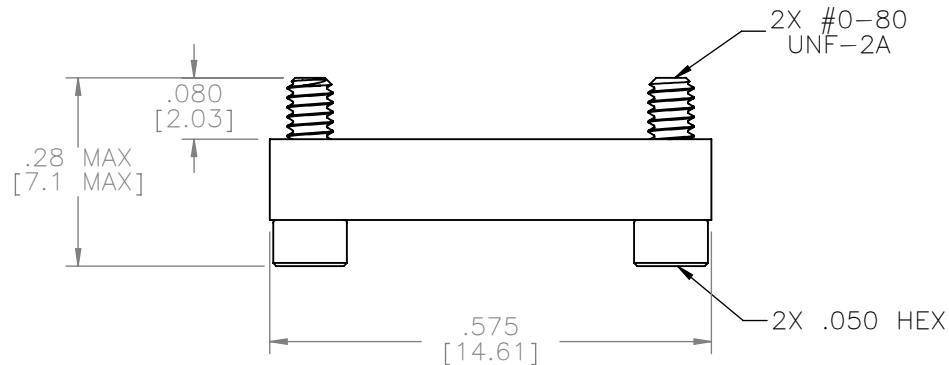
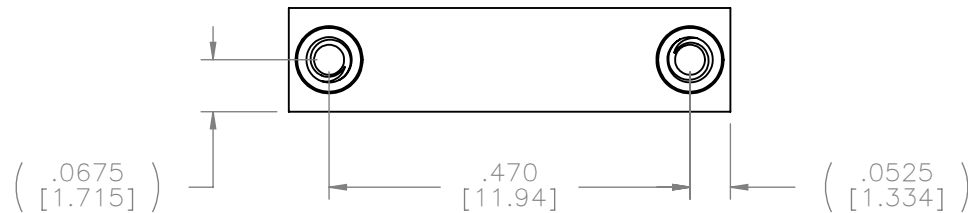
ALUMINUM 6061, NICKEL  
PLATED (500 MICROINCHES  
MINIMUM) PER SAE-AMS-2404.

## HARDWARE:

303 STAINLESS STEEL PER  
ASTM A582



ACTUAL SIZE



## NOTE:

DIMENSIONS IN [ ] ARE IN  
MILLIMETERS UNLESS  
OTHERWISE NOTED AND ARE  
FOR REFERENCE ONL

SLDW	THIRD ANGLE	
	—TOLERANCES—	
	UNLESS OTHERWISE NOTED	
	DIMENSIONS IN INCHES	
	2	PL DEC± .01
	3	PL DEC± .005
	4	PL DEC± .0005
	ANGLES ± 1°	

THIS DRAWING CONTAINS CONFIDENTIAL AND PROPRIETARY INFORMATION WHICH IS THE PROPERTY OF OMNETICS CONNECTOR CORP. THIS DOCUMENT MAY NOT, IN WHOLE OR IN PART, BE DUPLICATED, OR DISCLOSED FOR ANY PURPOSE, WITHOUT WRITTEN PERMISSION FROM OMNETICS CONNECTOR CORP.			
DFTM. DGJ	DATE	TITLE:	
CHK'D.	DATE		
APP'D.	DATE		
	11-01-12	DUST COVER	
		FEMALE Bi-Lobe®	
		(25) POSITION	

**OMNETICS**  
CONNECTOR CORPORATION  
7260 COMMERCE CIRCLE EAST  
MINNEAPOLIS, MN 55432  
WWW.OMNETICS.COM

CAGE CODE <b>61873</b>	
DWG NO. <b>A42031-025</b>	
SHEET 1 OF 1	REV B
SCALE: 4:1	