

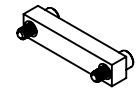
# MATERIALS

## HOUSING:

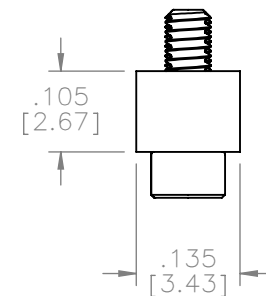
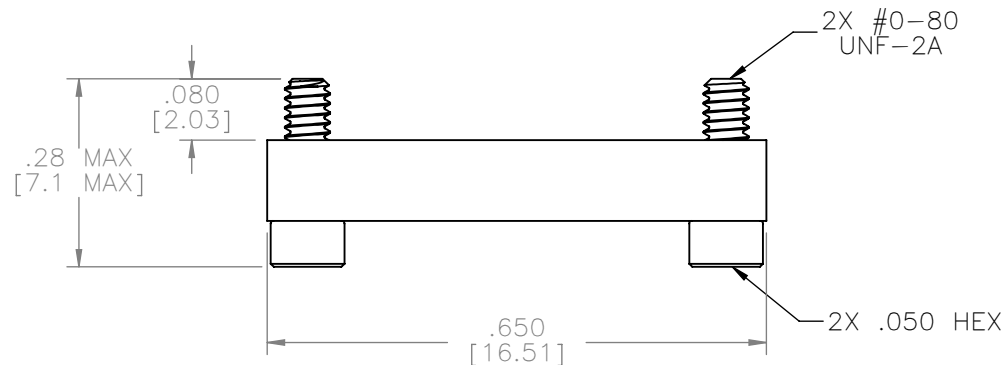
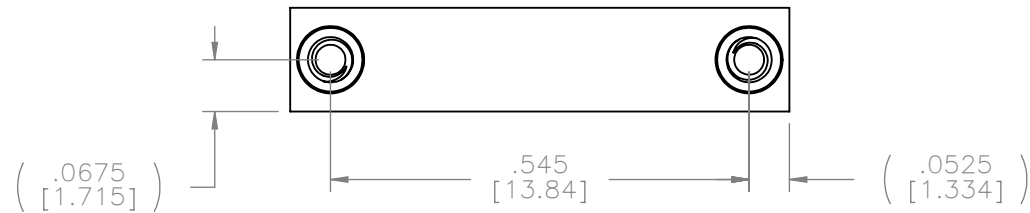
ALUMINUM 6061, NICKEL  
PLATED (500 MICROINCHES  
MINIMUM) PER SAE-AMS-2404.

## HARDWARE:

303 STAINLESS STEEL PER  
ASTM A582



ACTUAL SIZE



## NOTE:

DIMENSIONS IN [ ] ARE IN  
MILLIMETERS UNLESS  
OTHERWISE NOTED AND ARE  
FOR REFERENCE ONLY

THIRD ANGLE	
-TOLERANCES-	
UNLESS OTHERWISE NOTED	
DIMENSIONS IN INCHES	
2	PL DEC ± .01
3	PL DEC ± .005
4	PL DEC ± .0005
ANGLES ± 1°	

THIS DRAWING CONTAINS CONFIDENTIAL AND PROPRIETARY INFORMATION WHICH IS THE PROPERTY OF OMNETICS CONNECTOR CORP. THIS DOCUMENT MAY NOT, IN WHOLE OR IN PART, BE DUPLICATED, OR DISCLOSED FOR ANY PURPOSE, WITHOUT WRITTEN PERMISSION FROM OMNETICS CONNECTOR CORP.

DFTM. DGJ	DATE 11-01-12
CHK'D.	DATE
APP'D.	DATE

TITLE:  
**DUST COVER  
FEMALE Bi-Lobe®  
(31) POSITION**

**OMNETICS**  
CONNECTOR CORPORATION  
7260 COMMERCE CIRCLE EAST  
MINNEAPOLIS, MN 55432  
WWW.OMNETICS.COM

CAGE CODE <b>61873</b>	
DWG NO. <b>A42031-031</b>	
SHEET 1 OF 1	REV B
SCALE: 4:1	