

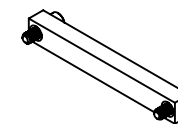
MATERIALS

HOUSING:

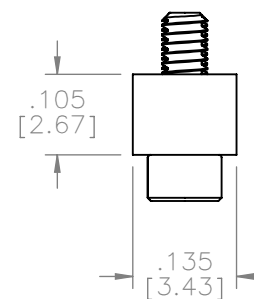
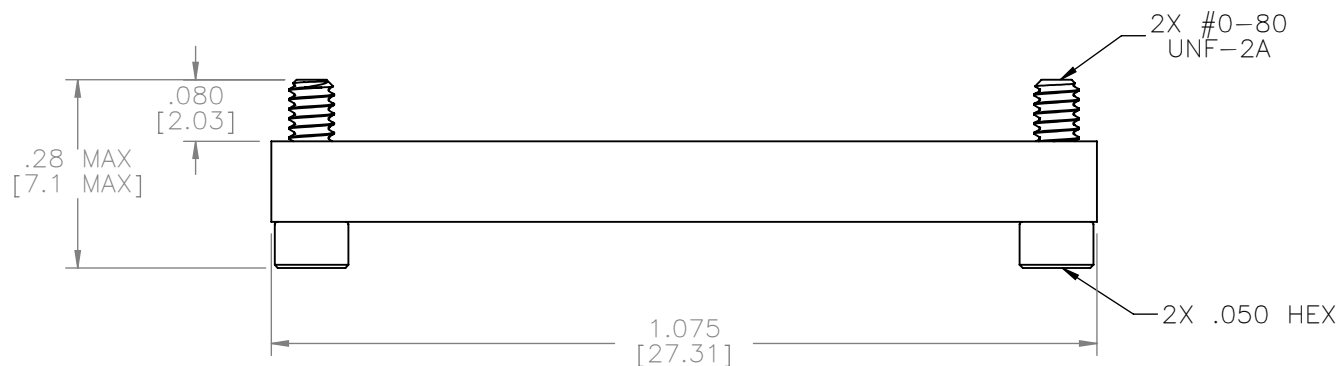
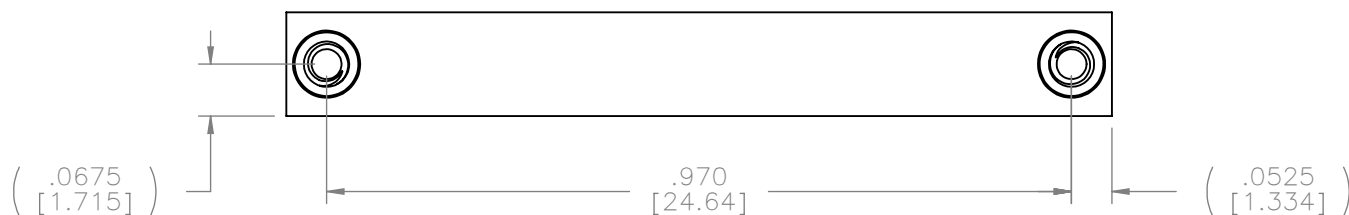
ALUMINUM 6061, NICKEL
PLATED (500 MICROINCHES
MINIMUM) PER SAE-AMS-2404.

HARDWARE:

303 STAINLESS STEEL PER
ASTM A582



ACTUAL SIZE



NOTE:

DIMENSIONS IN [] ARE IN
MILLIMETERS UNLESS
OTHERWISE NOTED AND ARE
FOR REFERENCE ONLY

SLDW	THIRD ANGLE	
	—TOLERANCES—	
	UNLESS OTHERWISE NOTED	
	DIMENSIONS IN INCHES	
2	PL DEC	± .01
3	PL DEC	± .005
4	PL DEC	± .0005
	ANGLES	± 1°

THIS DRAWING CONTAINS CONFIDENTIAL AND PROPRIETARY INFORMATION WHICH IS THE PROPERTY OF OMNETICS CONNECTOR CORP. THIS DOCUMENT MAY NOT, IN WHOLE OR IN PART, BE DUPLICATED, OR DISCLOSED FOR ANY PURPOSE, WITHOUT WRITTEN PERMISSION FROM OMNETICS CONNECTOR CORP.			
DFTM. DGJ	DATE	TITLE:	
CHK'D.	DATE		
APP'D.	DATE		
		DUST COVER	
		FEMALE Bi-Lobe®	
		(65) POSITION	

OMNETICS
CONNECTOR CORPORATION
7260 COMMERCE CIRCLE EAST
MINNEAPOLIS, MN 55432
WWW.OMNETICS.COM

CAGE CODE 61873	
DWG NO. A42031-065	
SHEET 1 OF 1	REV B
SCALE: 4:1	