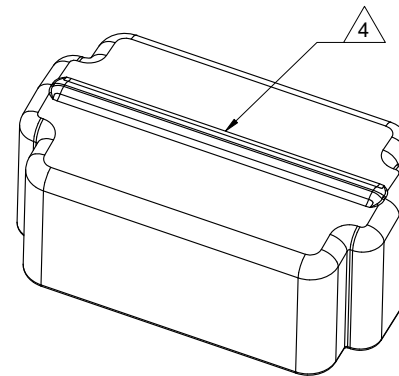
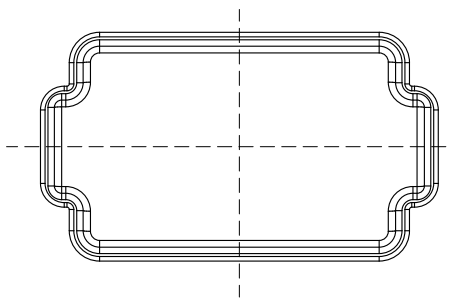
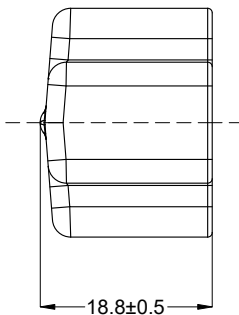
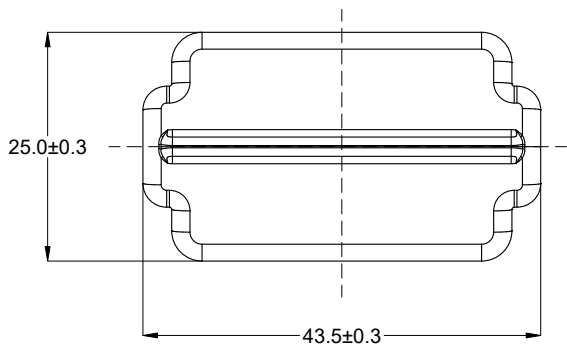




REVISIONS					
REV	ECO	DESCRIPTION	DATE	BY	APPR
A1	-	RELEASE NEW DRAWING	29/JUN/23	HAILEY	TOMMY



PART NUMBER CHART	
COLOR	PART NUMBER
GRAY	AT12P-DC
BLACK	AT12P-DC-BK

- NOTES: UNLESS OTHERWISE SPECIFIED
- THIS PART IS USED ON AT04-12Px-XXX (XXX=ALL MODIFICATIONS)
 - TEMPERATURE RATING: -29°C TO +100°C [-20°F TO +212°F]
 - BOTTOM OF PART MOLDED OPEN.
 -  SMALL MATERIAL EXTENSION IS ACCEPTABLE ON THIS END ALL AROUND
 - ALL DIMENSIONS ARE FOR REFERENCE USE ONLY.

SEE PART NUMBER CHART			
QUANTITY	PART NUMBER	DESCRIPTION	ITEM
MATERIALS LIST			
<div>UNLESS OTHERWISE SPECIFIED</div> <div>1) All dimensions are in metric(mm).</div> <div>2) Tolerances are as follows:</div> <div>1 PL DEC ±0.30</div> <div>2 PL DEC ±0.15</div> <div>3 PL DEC ±0.08</div> <div>Fractions ±1/64</div> <div>Angles ±1°</div> <div>3) Note reference = </div> <div>MATERIAL SPECIFICATIONS:</div> <div>PVC 6.5g</div> <div>PROCESS SPECIFICATIONS:</div> <div>NEXT ASSY:</div>		SIGNATURES	DATE
		DRAWN: HAILEY	30/JUN/23
		CHECKED: ORION	30/JUN/23
		ENGINEER:	
		APPROVAL: TOMMY	30/JUN/23
		CUSTOMER:	
		THIS DRAWING IS SUPPLIED FOR INFORMATION ONLY. DESIGN FEATURES, SPECIFICATIONS AND PERFORMANCE DATA SHOWN HEREON ARE THE PROPERTY OF THE AMPHENOL CORPORATION. NO RIGHTS OF REPRODUCTION ARE IMPLIED. ALL DIMENSIONS ARE SUBJECT TO NORMAL MANUFACTURING VARIATIONS.	
		SIZE	TYPE
		A	C-
		SCALE: NONE	
		DWG NO:	REVISION
		AT12P-DC-XX	A1
		SHEET 1	OF 1