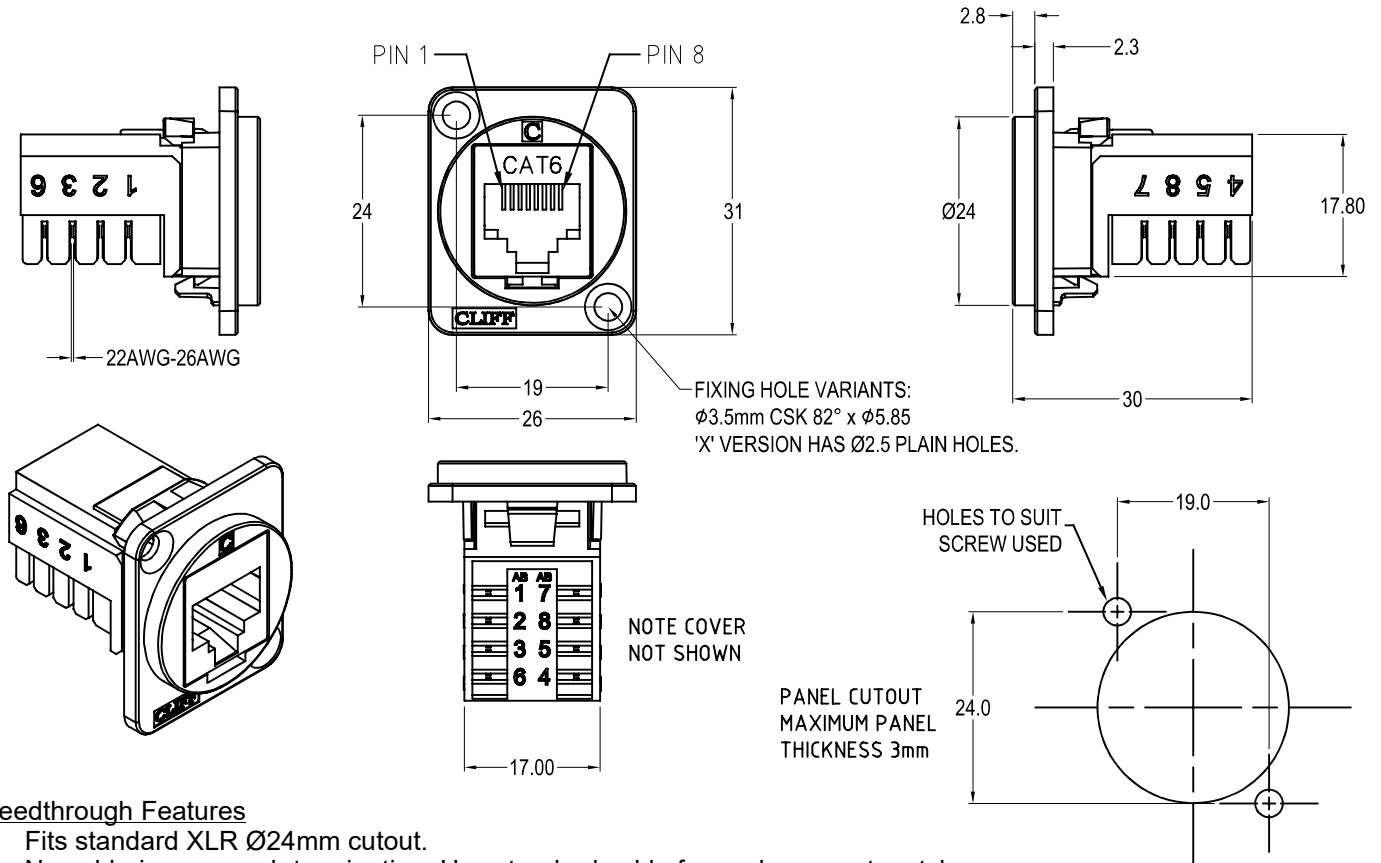


CLIFF

CAT6 IDC FEEDTHROUGH CONNECTOR



Feedthrough Features

- Fits standard XLR $\phi 24\text{mm}$ cutout.
- No soldering or punch termination. Use standard cable for each connector style.
- Front or rear mounted.
- Low rear profile

General:

Please note: Functionality is affected by cable quality, length and cable wiring configuration.

Other models available:

Part No.

CP30227

Cat6 IDC Black plastic frame, CSK holes

CP30227X

Cat6 IDC Black plastic frame, PLAIN holes

Material:

1. RJ45 / IDC / Cover : PC
2. RJ45: Phosphor Bronze, gold plated
3. IDC: Phosphor Bronze, nickel plated
4. PCB: FR4
5. Plastic Frame: Polyamide UL94 V-2

Performance:

1. T568A + T568B wiring.