



Image for illustrative purpose only

## Summary

<a href="#">Request a quote</a>	
<a href="#">Catalog</a>	
Size	3S
Series	S - Indoor Stepped Insert

# Technical details

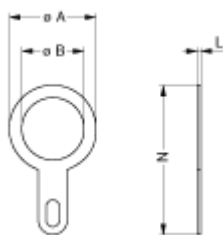
## Form & Material

Shell style / Model id	GCA - Earthing washer
Housing material	Brass (CuSnZn plated)
Keying	No keying
Weight	1.19 g

## Environment

Technical domain	Audio Video, Energy and Industrial, Semiconductor, Test and Measurement
Environmental sealing (IP rating)	No IP rating
Temperature range	-55°C / +250°C
Climatical Category	50/175/21
Humidity (max)	<=95% [at 60 deg C /140 F]
Shielding (min)	75 dB (10 MHz)
Shielding (min)	40 dB (1 GHz)
Shock Resistance	100 g [ 6 ms]
Vibration	15 g [10 Hz - 2000 Hz]

## Drawings



No keying

## Dimensions

	A	B	L	N
mm.	25	18.2	0.5	39
in.	0.98	0.72	0.02	1.54

[https://www.lemo.com/int\\_en/solutions/originals/s-indoor-stepped-insert/gca-3s-255-lt.html](https://www.lemo.com/int_en/solutions/originals/s-indoor-stepped-insert/gca-3s-255-lt.html)

LEMO products and services are provided "as is". LEMO makes no warranties or representations with regard to LEMO product & services or use of them, express, implied or statutory, including for accuracy, completeness, or security. The user is fully responsible for his products and applications using LEMO components.