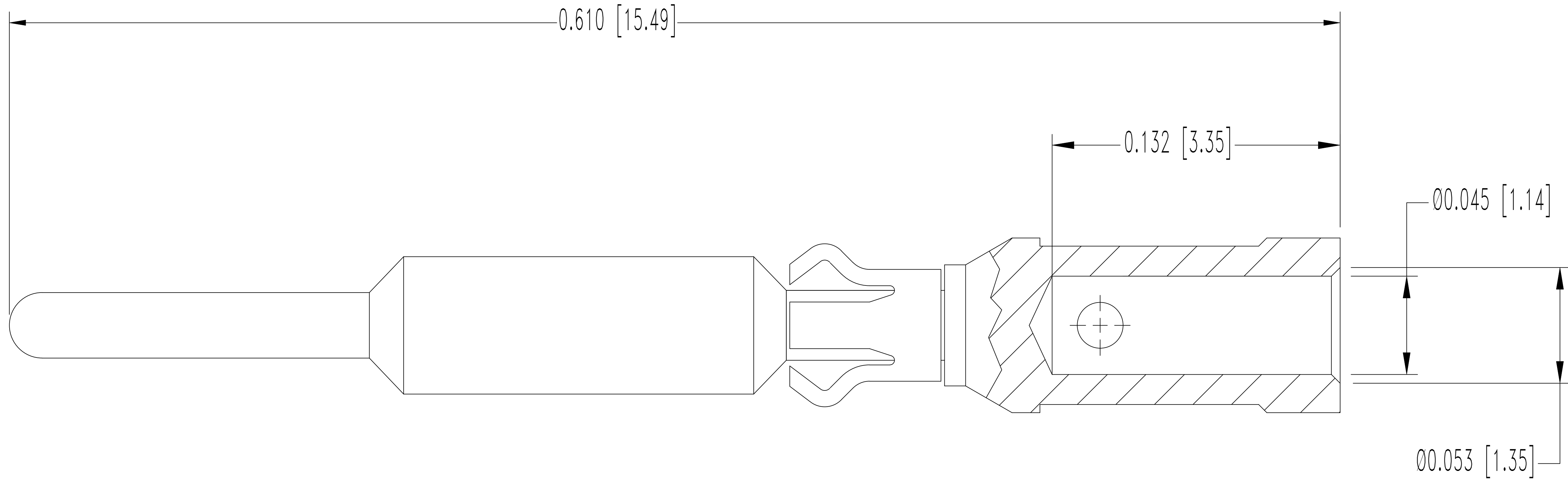


THIS DRAWING CONTAINS INFORMATION PROPRIETARY TO POSITRONIC AND ITS SUBSIDIARIES. POSITRONIC BELIEVES THE DATA ON THIS DRAWING TO BE RELIABLE, SINCE THE TECHNICAL INFORMATION IS GIVEN FREE OF CHARGE, THE USER EMPLOYS SUCH INFORMATION AT HIS OWN DISCRETION AND RISK. POSITRONIC ASSUMES NO RESPONSIBILITY FOR RESULTS OBTAINED OR DAMAGES INCURRED FROM USE OF SUCH INFORMATION IN WHOLE OR IN PART.

SK6922

DATE	REV	REVISION RECORD		APP	DR	CK
1-5 06	NC	ECO	25314	RCW	YK	TK
2-22 12	A	ECO	35259	COLE	BS	COLE
3-12 12	B	ECO	35351	COLE	BS	COLE



NOTES:

- MATERIALS AND FINISHES:
CONTACT: COPPER ALLOY, 0.000015 [0.38μ] GOLD OVER NICKEL PLATE.
RETAINING CLIP: BERYLLIUM COPPER: GOLD FLASH OVER NICKEL PLATE.
- DETAILED PRODUCT, MECHANICAL, AND ELECTRICAL INFORMATION IS AVAILABLE IN THE LATEST HIGH DENSITY RECTANGULAR PRODUCT PUBLICATION. VISIT CONNECTPOSITRONIC.COM/PRODUCTS/54/HIGHDENSITYRECTANGULAR OR CONNECTPOSITRONIC.COM.
- CONTACTS ARE ROHS COMPLIANT PER ROHS DIRECTIVE 2002/95/EC OF 27 JAN 2003.
- DIMENSIONS ARE IN INCHES [MILLIMETERS].



POSITRONIC INDUSTRIES INC.

SPRINGFIELD, MISSOURI 65801

DECIMAL TOL.

± 0.015 [0.38]

ANGULAR TOL.

± 5°

SGMC SERIES

TITLE

MC420N/AA

DATE

1-5-06

DRAWING NUMBER

SK6922

SCALE

N.T.S.

DRAWN BY

YK

APPROVED BY

R WILLIAMS

REV.

B