

Han Power T Modular Twin

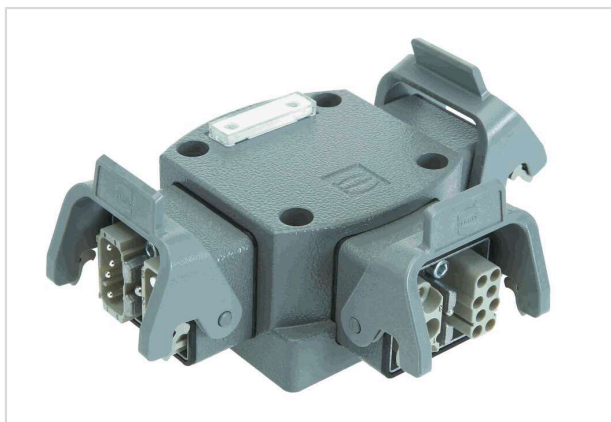


Image is for illustration purposes only. Please refer to product description.

Part number	09 12 008 4760
Specification	Han Power T Modular Twin
HARTING eCatalogue	https://harting.com/09120084760

Identification

Category	Energy distributors
Series of hoods/housings	Han-Power® T
Element	Energy distributor
Specification	With 3x Han-Modular® Twin Bulkhead mounted housing

Version

Number of contacts	7
Number of signal contacts	4
Number of power contacts	3

Technical characteristics

Rated current	40 A
Rated voltage conductor-earth	400 V
Rated voltage conductor-conductor	690 V
Rated impulse voltage	6 kV
Pollution degree	3
Rated current (signal)	16 A
Rated voltage (signal)	400 V
Rated impulse voltage (signal)	6 kV
Pollution degree (signal)	3
Rated voltage acc. to UL	600 V
Insulation resistance	$>10^8 \Omega$



Pushing Performance
Since 1945

Technical characteristics

Limiting temperature	-40 ... +125 °C
Mating cycles	≥500
Degree of protection acc. to IEC 60529	IP65

Material properties

Material (contacts)	Copper alloy
Material (hood/housing)	Zinc die-cast
Surface (hood/housing)	Powder-coated
Colour (hood/housing)	RAL 7037 (dust grey)
Material (seal)	NBR
Material (locking)	Polycarbonate (PC) Stainless steel
Material flammability class acc. to UL 94	V-0
RoHS	compliant with exemption
RoHS exemptions	6(c): Copper alloy containing up to 4 % lead by weight
ELV status	compliant with exemption
China RoHS	50
REACH Annex XVII substances	Not contained
REACH ANNEX XIV substances	Not contained
REACH SVHC substances	Yes
REACH SVHC substances	Potassium 1,1,2,2,3,3,4,4,4-nonafluorobutane-1-sulphonate Lead
ECHA SCIP number	2d63e3a4-7abb-4e67-bb13-55bff2df44a0
California Proposition 65 substances	Yes
California Proposition 65 substances	Lead Nickel Naphthalene
Fire protection on railway vehicles	EN 45545-2 (2020-08)
Requirement set with Hazard Levels	R22 (HL 1-3) R23 (HL 1-3)

Specifications and approvals

Specifications	IEC 60664-1 IEC 61984
Approvals	CE



Pushing Performance
Since 1945

Commercial data

Packaging size	1
Net weight	857.36 g
Country of origin	Germany
European customs tariff number	85366990
GTIN	5713140017832
ETIM	EC000214
eCl@ss	27142409 Small distribution board