



Pushing Performance  
Since 1945

## Module Clamp for rail (2 pcs)

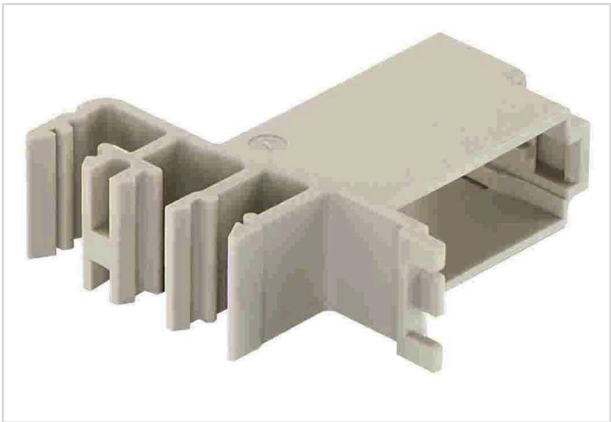


Image is for illustration purposes only. Please refer to product description.

Part number	09 14 000 0303
Specification	Module Clamp for rail (2 pcs)

### Identification

Category	Accessories
Series	Han-Modular®
Type of accessory	Module locking system

### Version

Pack contents	2 per unit
---------------	------------

### Material properties

RoHS	compliant
ELV status	compliant
China RoHS	e
REACH Annex XVII substances	Not contained
REACH ANNEX XIV substances	Not contained
REACH SVHC substances	Yes
REACH SVHC substances	Potassium 1,1,2,2,3,3,4,4,4-nonafluorobutane-1-sulphonate
ECHA SCIP number	60b1a572-bb3f-476f-9307-b7d1688bd90c
Fire protection on railway vehicles	EN 45545-2 (2020-08)
Requirement set with Hazard Levels	R22 (HL 1-3) R23 (HL 1-3)

### Commercial data

Packaging size	1
Net weight	20 g



**Pushing Performance**  
Since 1945

## Commercial data

Country of origin	Germany
European customs tariff number	85366990
GTIN	5713140018174
ETIM	EC002939
eCl@ss	27440392 Connector (accessories)