

## Han 200A axial module, female 95mm<sup>2</sup>

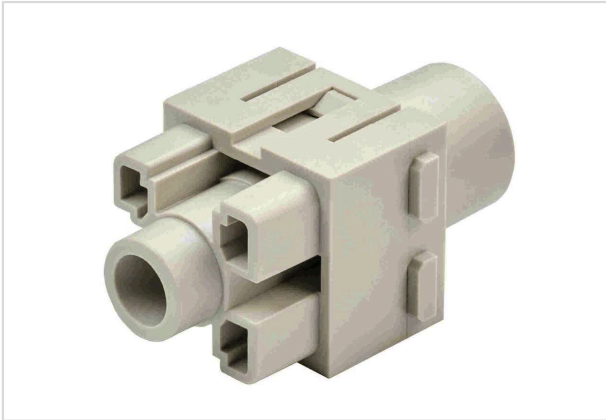


Image is for illustration purposes only. Please refer to product description.

Part number	09 14 001 2761
Specification	Han 200A axial module, female 95mm <sup>2</sup>
HARTING eCatalogue	<a href="https://harting.com/09140012761">https://harting.com/09140012761</a>

### Identification

Category	Modules
Series	Han-Modular <sup>®</sup>
Type of module	Han <sup>®</sup> 200 A module
Size of the module	Double module

### Version

Termination method	Axial screw termination
Gender	Female
Number of contacts	1

### Technical characteristics

Conductor cross-section	95 mm <sup>2</sup>
Wire outer diameter	≤16 mm
Rated current	200 A
Rated voltage	500 V
Rated impulse voltage	6 kV
Pollution degree	3
Insulation resistance	>10 <sup>10</sup> Ω
Contact resistance	≤0.2 mΩ
Stripping length	20 mm
Tightening torque	14 Nm
Limiting temperature	-40 ... +125 °C



**Pushing Performance**  
Since 1945

## Technical characteristics

Mating cycles ≥500

## Material properties

Material (insert)	Polycarbonate (PC)
Colour (insert)	RAL 7032 (pebble grey)
Material (contacts)	Copper alloy
Surface (contacts)	Silver plated
Material flammability class acc. to UL 94	V-0
RoHS	compliant with exemption
RoHS exemptions	6(c): Copper alloy containing up to 4 % lead by weight
ELV status	compliant with exemption
China RoHS	50
REACH Annex XVII substances	Not contained
REACH ANNEX XIV substances	Not contained
REACH SVHC substances	Yes
REACH SVHC substances	Lead
ECHA SCIP number	5dbb3851-b94e-4e88-97a1-571845975242
California Proposition 65 substances	Yes
California Proposition 65 substances	Antimony trioxide Lead Nickel
Fire protection on railway vehicles	EN 45545-2 (2020-08)
Requirement set with Hazard Levels	R22 (HL 1-3) R23 (HL 1-3)

## Specifications and approvals

Specifications	IEC 60664-1 IEC 61984
Approvals	DNV GL

## Commercial data

Packaging size	1
Net weight	61 g
Country of origin	Romania
European customs tariff number	85359000



**Pushing Performance**  
Since 1945

Commercial data

GTIN	5713140184541
ETIM	EC000438
eCl@ss	27440217 Module for industrial connectors (power/signals)