

Han 200A module, M8 screw bolt, female

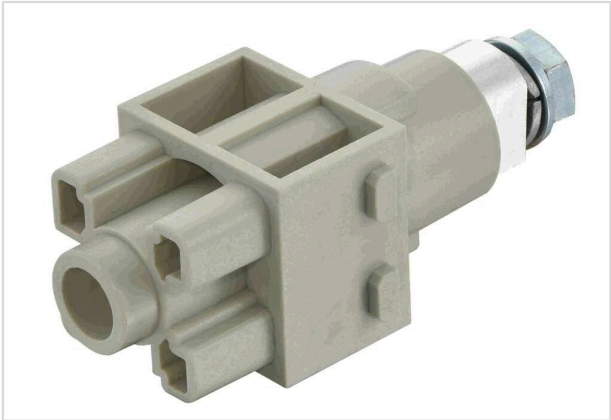


Image is for illustration purposes only. Please refer to product description.

Part number	09 14 001 2775
Specification	Han 200A module, M8 screw bolt, female
HARTING eCatalogue	https://b2b.harting.com/09140012775

Identification

Category	Modules
Series	Han-Modular®
Type of module	Han® 200 A module
Size of the module	Double module

Version

Termination method	M8 Screw termination
Gender	Female
Number of contacts	1
Details	ATTENTION! The rated voltage refers only to the mating side. The user must ensure that the clearance and creepage distances of the TC 200 screw contacts are maintained on the connection side. The screw contacts are intended for connection to busbars and, due to their design, are not touch-protected in the connection area.

Technical characteristics

Rated current	200 A
Rated voltage	1,000 V
Rated impulse voltage	8 kV
Pollution degree	3
Insulation resistance	>10 ¹⁰ Ω
Wrench size	13
Limiting temperature	-40 ... +125 °C



Pushing Performance
Since 1945

Technical characteristics

Mating cycles	≥500
---------------	------

Material properties

Material (insert)	Polycarbonate (PC)
Colour (insert)	RAL 7032 (pebble grey)
Material flammability class acc. to UL 94	V-0
RoHS	compliant with exemption
RoHS exemptions	6(c): Copper alloy containing up to 4 % lead by weight
ELV status	compliant with exemption
China RoHS	50
REACH Annex XVII substances	Not contained
REACH ANNEX XIV substances	Not contained
REACH SVHC substances	Yes
REACH SVHC substances	Lead
ECHA SCIP number	5dbb3851-b94e-4e88-97a1-571845975242
California Proposition 65 substances	Yes
California Proposition 65 substances	Lead Nickel
Fire protection on railway vehicles	EN 45545-2 (2020-08)
Requirement set with Hazard Levels	R22 (HL 1-3) R23 (HL 1-3)

Specifications and approvals

Specifications	IEC 60664-1 IEC 61984
Approvals	DNV GL

Commercial data

Packaging size	1
Net weight	107.82 g
Country of origin	Romania
European customs tariff number	85359000
GTIN	5713140019287
ETIM	EC000438



Pushing Performance
Since 1945

Commercial data

eCl@ss

27440217 Module for industrial connectors (power/signals)