

Han pneumatic module for 2 contact, fe

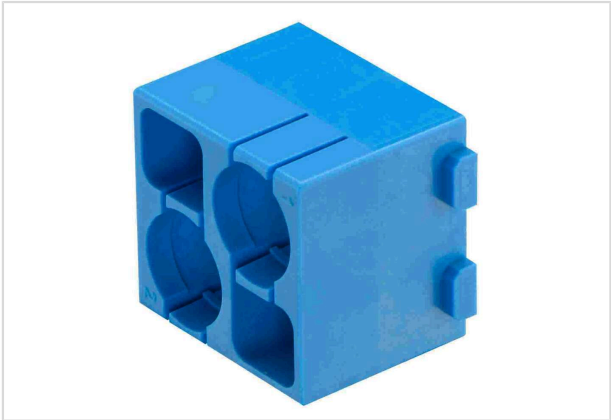


Image is for illustration purposes only. Please refer to product description.

| | |
|--------------------|---------------------------------------------------------------------------------------|
| Part number | 09 14 002 3502 |
| Specification | Han pneumatic module for 2 contact, fe |
| HARTING eCatalogue | https://b2b.harting.com/09140023502 |

Identification

| | |
|--------------------|-----------------------|
| Category | Modules |
| Series | Han-Modular® |
| Type of module | Han® Pneumatic module |
| Size of the module | Single module |

Version

| | |
|--------------------|-----------------------------------|
| Gender | Female |
| Number of contacts | 2 |
| Details | Please order contacts separately. |

Technical characteristics

| | |
|----------------------|----------------|
| Limiting temperature | -40 ... +85 °C |
| Mating cycles | ≥10,000 |

Material properties

| | |
|-------------------------------------------|--------------------|
| Material (insert) | Polycarbonate (PC) |
| Colour (insert) | Blue |
| Material flammability class acc. to UL 94 | V-0 |
| RoHS | compliant |
| ELV status | compliant |
| China RoHS | e |
| REACH Annex XVII substances | Not contained |
| REACH ANNEX XIV substances | Not contained |



Pushing Performance
Since 1945

Material properties

| | |
|-------------------------------------|----------------------|
| REACH SVHC substances | Not contained |
| Fire protection on railway vehicles | EN 45545-2 (2020-08) |
| Requirement set with Hazard Levels | R22 (HL 1-3) |
| | R23 (HL 1-3) |

Specifications and approvals

| | |
|----------------|-------------|
| Specifications | IEC 61984 |
| | IEC 60664-1 |

Commercial data

| | |
|--------------------------------|-------------------------------------------------------|
| Packaging size | 2 |
| Net weight | 12 g |
| Country of origin | China |
| European customs tariff number | 85389099 |
| GTIN | 5713140184879 |
| ETIM | EC000438 |
| eCl@ss | 27440220 Module for industrial connectors (pneumatic) |