

# Han Guiding Relay module, female

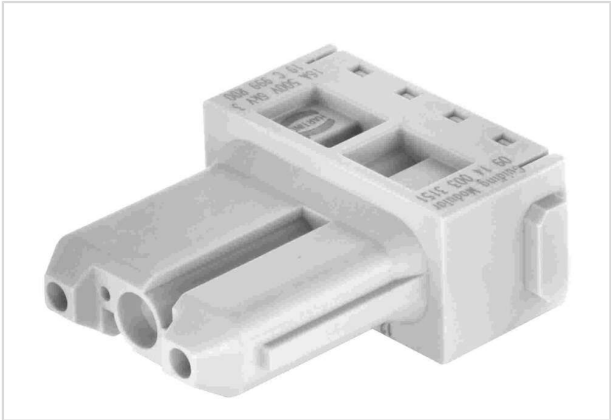


Image is for illustration purposes only. Please refer to product description.

Part number	09 14 003 3151
Specification	Han Guiding Relay module, female
HARTING eCatalogue	<a href="https://b2b.harting.com/09140033151">https://b2b.harting.com/09140033151</a>

## Identification

Category	Modules
Series	Han-Modular®
Type of module	Han® Guiding module
Size of the module	Single module
Description of the module	Relay module
Features	2 contacts with relay function (last mate - first break)

## Version

Termination method	Crimp termination
Gender	Female
Number of contacts	3
Details	Please order crimp contacts separately.

## Technical characteristics

Conductor cross-section	0.14 ... 4 mm²
Wire outer diameter	≤4.8 mm
Rated current	16 A
Rated voltage	500 V
Rated impulse voltage	6 kV
Pollution degree	3
Insulation resistance	>10 <sup>10</sup> Ω
Limiting temperature	-40 ... +125 °C
Mating cycles	≥500



**Pushing Performance**  
Since 1945

## Technical characteristics

Lock-in range  $\pm 4$  mm

## Material properties

Material (insert)	Polycarbonate (PC)
Colour (insert)	RAL 7032 (pebble grey)
Material flammability class acc. to UL 94	V-0
RoHS	compliant
ELV status	compliant
China RoHS	e
REACH Annex XVII substances	Not contained
REACH ANNEX XIV substances	Not contained
REACH SVHC substances	Not contained
California Proposition 65 substances	Not contained
Fire protection on railway vehicles	EN 45545-2 (2020-08)
Requirement set with Hazard Levels	R22 (HL 1-3)
	R23 (HL 1-3)

## Specifications and approvals

Specifications	IEC 60664-1
	IEC 61984

## Commercial data

Packaging size	2
Net weight	1 g
Country of origin	China
European customs tariff number	85389099
GTIN	5713140184701
ETIM	EC000438
eCl@ss	27440217 Module for industrial connectors (power/signals)