

Han Guiding PE module, female

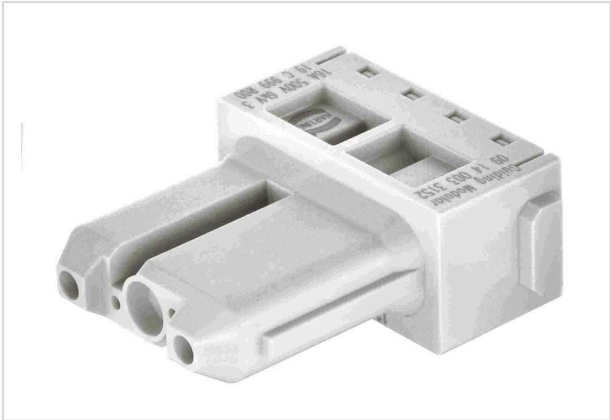


Image is for illustration purposes only. Please refer to product description.

Part number	09 14 003 3152
Specification	Han Guiding PE module, female
HARTING eCatalogue	https://b2b.harting.com/09140033152

Identification

Category	Modules
Series	Han-Modular®
Type of module	Han® Guiding module
Size of the module	Single module
Description of the module	PE module

Version

Termination method	Crimp termination
Gender	Female
Number of contacts	2
PE contact	Yes
Details	Please order crimp contacts separately. Not for Han-Modular® hinged frames!

Technical characteristics

Conductor cross-section	0.14 ... 4 mm²
Wire outer diameter	≤4.8 mm
Rated current	16 A
Rated voltage	500 V
Rated impulse voltage	6 kV
Pollution degree	3
Insulation resistance	>10 ¹⁰ Ω
Limiting temperature	-40 ... +125 °C



Pushing Performance
Since 1945

Technical characteristics

Mating cycles	≥500
Lock-in range	±4 mm

Material properties

Material (insert)	Polycarbonate (PC)
Colour (insert)	RAL 7032 (pebble grey)
Material flammability class acc. to UL 94	V-0
RoHS	compliant
ELV status	compliant
China RoHS	e
REACH Annex XVII substances	Not contained
REACH ANNEX XIV substances	Not contained
REACH SVHC substances	Not contained
California Proposition 65 substances	Not contained
Fire protection on railway vehicles	EN 45545-2 (2020-08)
Requirement set with Hazard Levels	R22 (HL 1-3)
	R23 (HL 1-3)

Specifications and approvals

Specifications	IEC 60664-1
	IEC 61984

Commercial data

Packaging size	2
Net weight	9.2 g
Country of origin	China
European customs tariff number	85389099
GTIN	5713140184725
ETIM	EC000438
eCl@ss	27440217 Module for industrial connectors (power/signals)