



Pushing Performance  
Since 1945

# Han® E Push-In module, female 0,5-2,5mm²

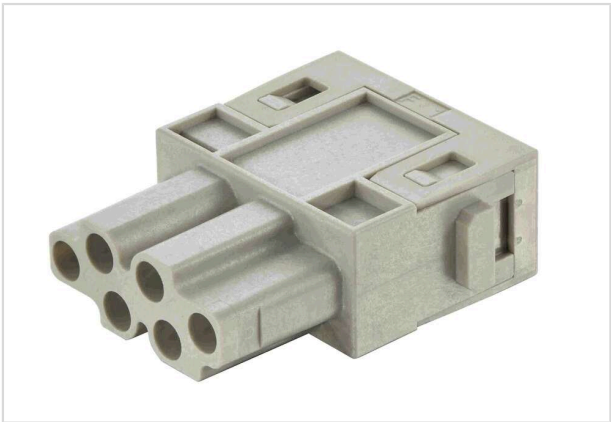


Image is for illustration purposes only. Please refer to product description.

Part number	09 14 006 5101
Specification	Han® E Push-In module, female 0,5-2,5mm²
HARTING eCatalogue	<a href="https://b2b.harting.com/09140065101">https://b2b.harting.com/09140065101</a>

## Identification

Category	Modules
Series	Han-Modular®
Type of module	Han E® module
Size of the module	Single module

## Version

Termination method	Push-In
Gender	Female
Number of contacts	6

## Technical characteristics

Conductor cross-section	0.5 ... 2.5 mm²
Wire outer diameter	≤4.8 mm
Rated current	16 A
Rated voltage	500 V
Rated impulse voltage	6 kV
Pollution degree	3
Insulation resistance	>10 <sup>10</sup> Ω
Limiting temperature	-40 ... +125 °C
Mating cycles	≥500

## Material properties

Material (insert)	Polycarbonate (PC)
-------------------	--------------------



**Pushing Performance**  
Since 1945

## Material properties

Colour (insert)	RAL 7032 (pebble grey)
Material flammability class acc. to UL 94	V-0
RoHS	compliant
ELV status	compliant
China RoHS	e
REACH Annex XVII substances	Not contained
REACH ANNEX XIV substances	Not contained
REACH SVHC substances	Not contained
California Proposition 65 substances	Yes
California Proposition 65 substances	Lead

## Specifications and approvals

Specifications	IEC 60664-1
	IEC 61984
	IEC 61373 Category 2
	IEC 60352-7

## Commercial data

Packaging size	2
Net weight	18 g
Country of origin	Romania
European customs tariff number	85389099
GTIN	5713140423190
ETIM	EC000438
eCl@ss	27440217 Module for industrial connectors (power/signals)