

Han DD Quick-Lock module, female

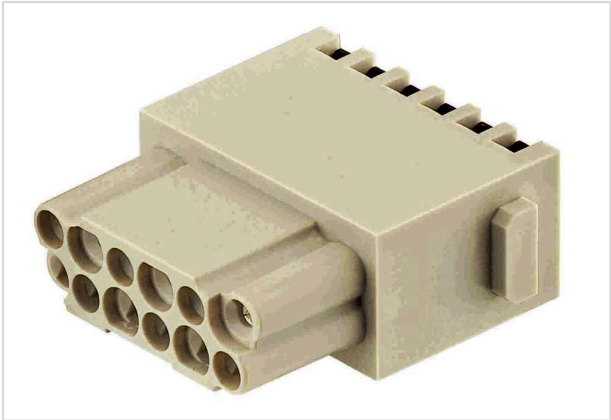


Image is for illustration purposes only. Please refer to product description.

Part number	09 14 012 2732
Specification	Han DD Quick-Lock module, female
HARTING eCatalogue	https://harting.com/09140122732

Identification

Category	Modules
Series	Han-Modular®
Type of module	Han DD® module
Size of the module	Single module

Version

Termination method	Han-Quick Lock® termination
Gender	Female
Number of contacts	12
Details	Black slide
Details	for stranded wire according to IEC 60228 Class 5

Technical characteristics

Conductor cross-section	0.25 ... 1.5 mm²
Wire outer diameter	≤3.6 mm
Rated current	10 A
Rated voltage	250 V
Rated impulse voltage	4 kV
Pollution degree	3
Rated voltage acc. to UL	600 V
Insulation resistance	>10 ¹⁰ Ω
Contact resistance	≤3 mΩ



Pushing Performance
Since 1945

Technical characteristics

Stripping length	10 mm
Limiting temperature	-40 ... +125 °C
Mating cycles	≥500

Material properties

Material (insert)	Polycarbonate (PC)
Colour (insert)	RAL 7032 (pebble grey)
Material (contacts)	Copper alloy
Surface (contacts)	Silver plated
Material flammability class acc. to UL 94	V-0
RoHS	compliant with exemption
RoHS exemptions	6(c): Copper alloy containing up to 4 % lead by weight
ELV status	compliant with exemption
China RoHS	50
REACH Annex XVII substances	Not contained
REACH ANNEX XIV substances	Not contained
REACH SVHC substances	Yes
REACH SVHC substances	Lead
ECHA SCIP number	5dbb3851-b94e-4e88-97a1-571845975242
California Proposition 65 substances	Yes
California Proposition 65 substances	Lead Nickel
Fire protection on railway vehicles	EN 45545-2 (2020-08)
Requirement set with Hazard Levels	R22 (HL 1-3) R23 (HL 1-3)

Specifications and approvals

Specifications	IEC 60664-1 IEC 61984
UL / CSA	UL 1977 ECBT2.E235076 CSA-C22.2 No. 182.3 ECBT8.E235076
Approvals	DNV GL

Commercial data

Packaging size	2
----------------	---



Pushing Performance
Since 1945

Commercial data

Net weight	21 g
Country of origin	Romania
European customs tariff number	85389099
GTIN	5713140020931
ETIM	EC000438
eCl@ss	27440217 Module for industrial connectors (power/signals)