

## Han DD module, crimp male

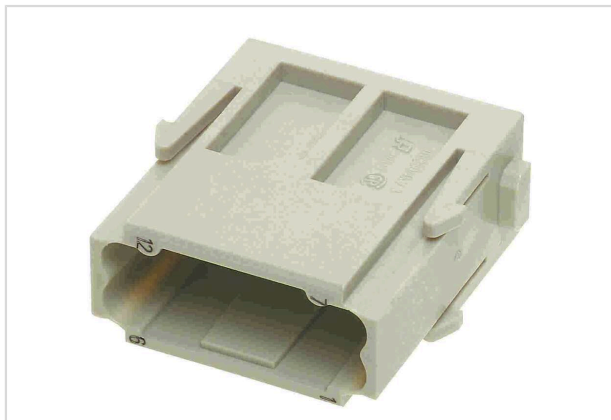


Image is for illustration purposes only. Please refer to product description.

|                    |   |
|--------------------|---|
| Part number        | 09 14 012 3001  |
| Specification      | Han DD module, crimp male   |
| HARTING eCatalogue | <a href="https://b2b.harting.com/09140123001">https://b2b.harting.com/09140123001</a> |

### Identification

|                    |                |
|--------------------|----------------|
| Category           | Modules        |
| Series             | Han-Modular®   |
| Type of module     | Han DD® module |
| Size of the module | Single module  |

### Version

|                    |   |
|--------------------|---|
| Termination method | Crimp termination                       |
| Gender             | Male                                    |
| Number of contacts | 12                                      |
| Details            | Please order crimp contacts separately. |

### Technical characteristics

|                          |                     |
|--------------------------|---------------------|
| Conductor cross-section  | 0.14 ... 2.5 mm²    |
| Wire outer diameter      | ≤3.9 mm             |
| Rated current            | 10 A                |
| Rated voltage            | 250 V               |
| Rated impulse voltage    | 4 kV                |
| Pollution degree         | 3                   |
| Rated voltage acc. to UL | 600 V               |
| Insulation resistance    | >10 <sup>10</sup> Ω |
| Limiting temperature     | -40 ... +125 °C     |
| Mating cycles            | ≥10,000             |



**Pushing Performance**  
Since 1945

## Technical characteristics

|                           |   |
|---------------------------|---|
| Note on the mating cycles | Mating cycles with other HMC components |
|---------------------------|---|

## Material properties

|   |                              |
|---|------------------------------|
| Material (insert)                         | Polycarbonate (PC)           |
| Colour (insert)                           | RAL 7032 (pebble grey)       |
| Material flammability class acc. to UL 94 | V-0                          |
| RoHS                                      | compliant                    |
| ELV status                                | compliant                    |
| China RoHS                                | e                            |
| REACH Annex XVII substances               | Not contained                |
| REACH ANNEX XIV substances                | Not contained                |
| REACH SVHC substances                     | Not contained                |
| California Proposition 65 substances      | Not contained                |
| Fire protection on railway vehicles       | EN 45545-2 (2020-08)         |
| Requirement set with Hazard Levels        | R22 (HL 1-3)<br>R23 (HL 1-3) |

## Specifications and approvals

|                |   |
|----------------|---|
| Specifications | IEC 60664-1<br>IEC 61984  |
| UL / CSA       | UL 1977 ECBT2.E235076<br>UL 2237 PVVA2.E318390<br>CSA-C22.2 No. 182.3 PVVA8.E318390 |
| Approvals      | DNV GL  |

## Commercial data

|                                |   |
|--------------------------------|---|
| Packaging size                 | 2   |
| Net weight                     | 1.04 g  |
| Country of origin              | Germany   |
| European customs tariff number | 85389099  |
| GTIN                           | 5713140020962   |
| ETIM                           | EC000438  |
| eCI@ss                         | 27440217 Module for industrial connectors (power/signals) |