

## Han Domino DD cube, crimp (F.1)

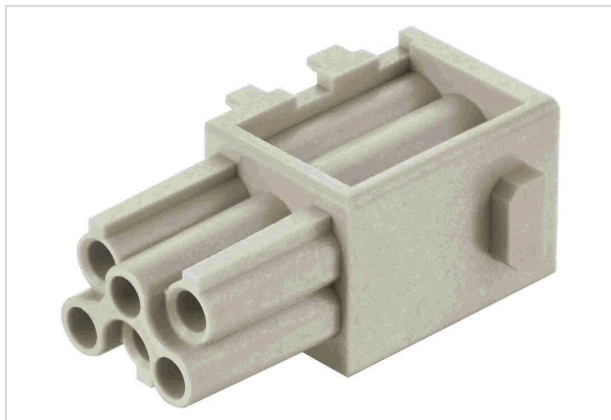


Image is for illustration purposes only. Please refer to product description.

|                    |   |
|--------------------|---|
| Part number        | 09 14 906 1101  |
| Specification      | Han Domino DD cube, crimp (F.1)   |
| HARTING eCatalogue | <a href="https://harting.com/09149061101">https://harting.com/09149061101</a> |

### Identification

|                           |                     |
|---------------------------|---------------------|
| Category                  | Modules             |
| Series                    | Han-Modular®        |
| Type of module            | Han® Domino DD Cube |
| Size of the module        | Domino module       |
| Description of the module | Small tab           |

### Version

|                    |   |
|--------------------|---|
| Termination method | Crimp termination                       |
| Gender             | Female                                  |
| Number of contacts | 6                                       |
| Details            | Please order crimp contacts separately. |

### Technical characteristics

|                          |                              |
|--------------------------|------------------------------|
| Conductor cross-section  | 0.14 ... 2.5 mm <sup>2</sup> |
| Wire outer diameter      | ≤3.9 mm                      |
| Rated current            | 10 A                         |
| Rated voltage            | 250 V                        |
| Rated impulse voltage    | 4 kV                         |
| Pollution degree         | 3                            |
| Rated voltage acc. to UL | 600 V                        |
| Insulation resistance    | >10 <sup>10</sup> Ω          |
| Limiting temperature     | -40 ... +125 °C              |
| Mating cycles            | ≥10,000                      |



**Pushing Performance**  
Since 1945

## Technical characteristics

|                           |   |
|---------------------------|---|
| Note on the mating cycles | Mating cycles with other HMC components |
|---------------------------|---|

## Material properties

|   |                        |
|---|------------------------|
| Material (insert)                         | Polycarbonate (PC)     |
| Colour (insert)                           | RAL 7032 (pebble grey) |
| Material flammability class acc. to UL 94 | V-0                    |
| RoHS                                      | compliant              |
| ELV status                                | compliant              |
| China RoHS                                | e                      |
| REACH Annex XVII substances               | Not contained          |
| REACH ANNEX XIV substances                | Not contained          |
| REACH SVHC substances                     | Not contained          |
| Fire protection on railway vehicles       | EN 45545-2 (2020-08)   |
| Requirement set with Hazard Levels        | R22 (HL 1-3)           |
|   | R23 (HL 1-3)           |

## Specifications and approvals

|                |                                   |
|----------------|-----------------------------------|
| Specifications | IEC 60664-1                       |
|                | IEC 61984                         |
| UL / CSA       | UL 1977 ECBT2.E235076             |
|                | CSA-C22.2 No. 182.3 ECBT8.E235076 |

## Commercial data

|                                |   |
|--------------------------------|---|
| Packaging size                 | 2   |
| Net weight                     | 5 g   |
| Country of origin              | Romania   |
| European customs tariff number | 85366990  |
| GTIN                           | 5713140185159   |
| ETIM                           | EC000438  |
| eCl@ss                         | 27440217 Module for industrial connectors (power/signals) |