



Pushing Performance
Since 1945

Han Domino RJ45 cube, gender changer F.2

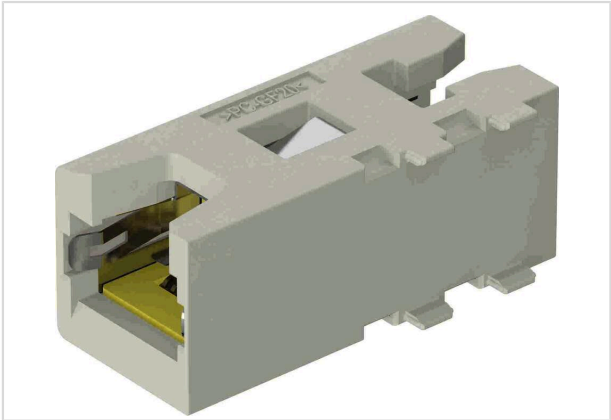


Image is for illustration purposes only. Please refer to product description.

Part number	09 14 945 2101
Specification	Han Domino RJ45 cube, gender changer F.2
HARTING eCatalogue	https://harting.com/09149452101

Identification

Category	Modules
Series	Han-Modular®
Type of module	Han® Domino RJ45 Cube
Size of the module	Domino module
Description of the module	Gender changer for patch cable Large Tab

Version

Gender	Female
Number of contacts	8

Technical characteristics

Rated current	1 A
Rated voltage	50 V
Rated impulse voltage	0.8 kV
Pollution degree	3
Transmission characteristics	Cat. 6 _A Class E _A up to 500 MHz
Data rate	10 Mbit/s 100 Mbit/s 1 Gbit/s 2.5 Gbit/s 5 Gbit/s 10 Gbit/s
Insulation resistance	>10 ¹⁰ Ω



Pushing Performance
Since 1945

Technical characteristics

Limiting temperature	-40 ... +70 °C
Mating cycles	≥500

Material properties

Material (insert)	Polyamide (PA)
	Polycarbonate (PC)
	Stainless steel
Colour (insert)	RAL 7032 (pebble grey)
Material flammability class acc. to UL 94	V-0
RoHS	compliant
ELV status	compliant
China RoHS	e
REACH Annex XVII substances	Not contained
REACH ANNEX XIV substances	Not contained
REACH SVHC substances	Not contained
California Proposition 65 substances	Not contained

Specifications and approvals

Specifications	IEC 60664-1
	IEC 61984

Commercial data

Packaging size	2
Country of origin	Romania
European customs tariff number	85366990
GTIN	5713140383623
ETIM	EC000438
eCl@ss	27440218 Module for industrial connectors (data)