

DIN-Signal 3C/3R shroud press-in

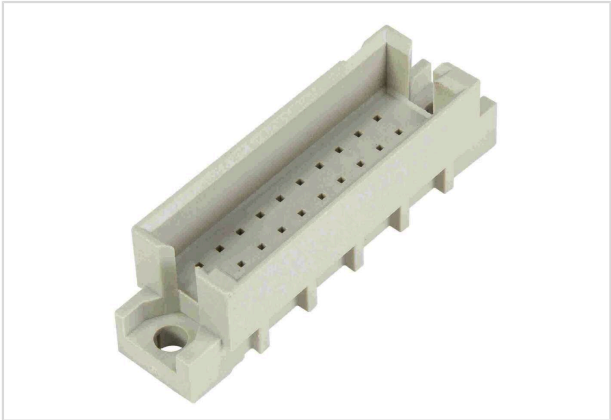


Image is for illustration purposes only. Please refer to product description.

Part number	09 29 130 3101
Specification	DIN-Signal 3C/3R shroud press-in
HARTING eCatalogue	https://b2b.harting.com/09291303101

Identification

Category	Accessories
Series	DIN 41612
Type of accessory	Pin shroud
Description of the accessory	for female connectors type 3C for male connectors type 3R

Version

Fixing	Press-in fixing
--------	-----------------

Technical characteristics

Isolation group	IIIa ($175 \leq CTI < 400$)
-----------------	-------------------------------

Material properties

Material (accessories)	Thermoplastic
Colour (accessories)	RAL 7032 (pebble grey)
Material flammability class acc. to UL 94	V-0
RoHS	compliant
ELV status	compliant
China RoHS	e
REACH Annex XVII substances	Not contained
REACH ANNEX XIV substances	Not contained
REACH SVHC substances	Not contained
California Proposition 65 substances	Yes



Pushing Performance
Since 1945

Material properties

California Proposition 65 substances	Antimony trioxide
Fire protection on railway vehicles	EN 45545-2 (2020-08)
Requirement set with Hazard Levels	R26

Specifications and approvals

Railway classification	F4/I3 acc. to NFF 16-101/102
------------------------	------------------------------

Commercial data

Packaging size	20
Net weight	4.25 g
Country of origin	Romania
European customs tariff number	85366990
GTIN	5713140043114
ETIM	EC002943
eCl@ss	27440292 Connector component (accessories)