

Han E 16 POS. M INSERT CRIMP

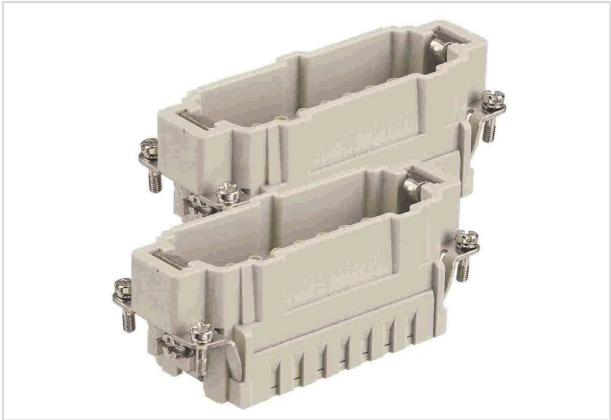


Image is for illustration purposes only. Please refer to product description.

Part number	09 33 016 2612
Specification	Han E 16 POS. M INSERT CRIMP
HARTING eCatalogue	https://b2b.harting.com/09330162612

Identification

Category	Inserts
Series	Han E [®]
Specification	Continuing marking

Version

Termination method	Crimp termination
Gender	Male
Size	32 B
Number of contacts	32
PE contact	Yes
Contact identification	17 ... 32
Details	Please order crimp contacts separately. You need two inserts for a complete assembly!

Technical characteristics

Conductor cross-section	0.14 ... 4 mm ²
Conductor cross-section [AWG]	AWG 26 ... AWG 12
Rated current	16 A
Rated voltage	500 V
Rated impulse voltage	6 kV
Pollution degree	3
Rated voltage acc. to UL	600 V
Rated voltage acc. to CSA	600 V



Pushing Performance
Since 1945

Technical characteristics

Insulation resistance	$>10^{10} \Omega$
Limiting temperature	-40 ... +125 °C
Mating cycles	≥ 500

Material properties

Material (insert)	Polycarbonate (PC)
Colour (insert)	RAL 7032 (pebble grey)
Material flammability class acc. to UL 94	V-0
RoHS	compliant
ELV status	compliant
China RoHS	e
REACH Annex XVII substances	Not contained
REACH ANNEX XIV substances	Not contained
REACH SVHC substances	Not contained
California Proposition 65 substances	Yes
California Proposition 65 substances	Lead Nickel
Fire protection on railway vehicles	EN 45545-2 (2020-08)
Requirement set with Hazard Levels	R22 (HL 1-3) R23 (HL 1-3)

Specifications and approvals

Specifications	IEC 60664-1 IEC 61984
UL / CSA	UL 1977 ECBT2.E235076 UL 2237 PVVA2.E318390 CSA-C22.2 No. 182.3 PVVA8.E318390
Approvals	DNV GL

Commercial data

Packaging size	1
Net weight	56.54 g
Country of origin	Germany
European customs tariff number	85366990
GTIN	5713140051331
ETIM	EC000438



Pushing Performance
Since 1945

Commercial data

eCl@ss

27440205 Contact insert for industrial connectors