

# Han 10HvE-M-c

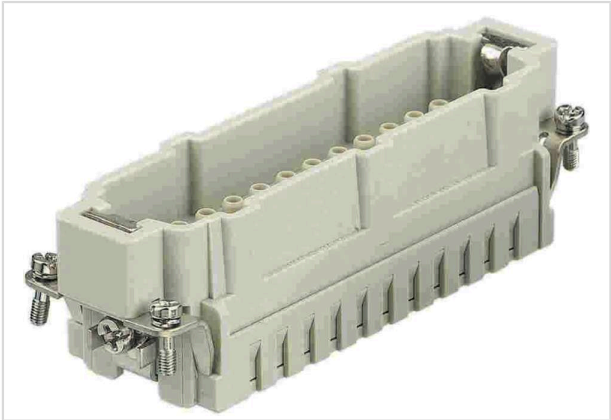


Image is for illustration purposes only. Please refer to product description.

|                    |   |
|--------------------|---|
| Part number        | 09 34 010 2602  |
| Specification      | Han 10HvE-M-c   |
| HARTING eCatalogue | <a href="https://b2b.harting.com/09340102602">https://b2b.harting.com/09340102602</a> |

## Identification

|          |           |
|----------|-----------|
| Category | Inserts   |
| Series   | Han Hv E® |

## Version

|                                   |   |
|-----------------------------------|---|
| Termination method                | Crimp termination                       |
| Gender                            | Male                                    |
| Size                              | 24 B                                    |
| Number of contacts                | 12                                      |
| Number of power contacts          | 10                                      |
| Number of special contacts        | 2                                       |
| Specification of special contacts | Relay contact                           |
| PE contact                        | Yes                                     |
| Details                           | Please order crimp contacts separately. |

## Technical characteristics

|                               |                   |
|-------------------------------|-------------------|
| Conductor cross-section       | 0.5 ... 4 mm²     |
| Conductor cross-section [AWG] | AWG 20 ... AWG 12 |
| Rated current                 | 16 A              |
| Rated voltage                 | 830 V             |
| Rated impulse voltage         | 8 kV              |
| Pollution degree              | 3                 |
| Rated voltage acc. to UL      | 600 V             |
| Rated voltage acc. to CSA     | 600 V             |



**Pushing Performance**  
Since 1945

## Technical characteristics

|                       |                   |
|-----------------------|-------------------|
| Insulation resistance | $>10^{10} \Omega$ |
| Limiting temperature  | -40 ... +125 °C   |
| Mating cycles         | $\geq 500$        |

## Material properties

|   |                              |
|---|------------------------------|
| Material (insert)                         | Polycarbonate (PC)           |
| Colour (insert)                           | RAL 7032 (pebble grey)       |
| Material flammability class acc. to UL 94 | V-0                          |
| RoHS                                      | compliant                    |
| ELV status                                | compliant                    |
| China RoHS                                | e                            |
| REACH Annex XVII substances               | Not contained                |
| REACH ANNEX XIV substances                | Not contained                |
| REACH SVHC substances                     | Not contained                |
| California Proposition 65 substances      | Yes                          |
| California Proposition 65 substances      | Lead<br>Nickel               |
| Fire protection on railway vehicles       | EN 45545-2 (2020-08)         |
| Requirement set with Hazard Levels        | R22 (HL 1-3)<br>R23 (HL 1-3) |

## Specifications and approvals

|                |                          |
|----------------|--------------------------|
| Specifications | IEC 60664-1<br>IEC 61984 |
| UL / CSA       | UL 1977 ECBT2.E235076    |

## Commercial data

|                                |   |
|--------------------------------|---|
| Packaging size                 | 1   |
| Net weight                     | 70.52 g   |
| Country of origin              | Germany   |
| European customs tariff number | 85366990  |
| GTIN                           | 5713140571679                                     |
| eCl@ss                         | 27440205 Contact insert for industrial connectors |