

Han 16Ex-M-s

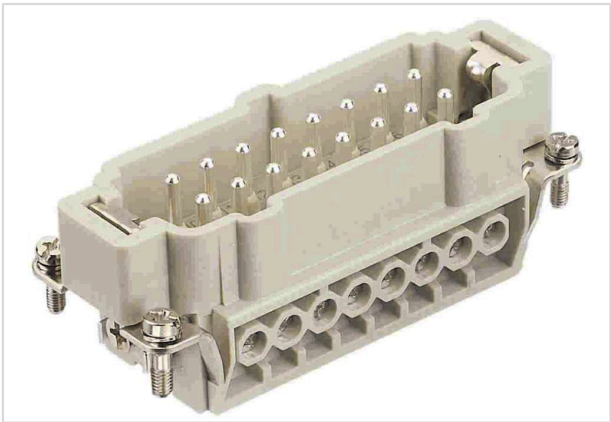


Image is for illustration purposes only. Please refer to product description.

| | |
|--------------------|---|
| Part number | 09 36 016 2601 |
| Specification | Han 16Ex-M-s |
| HARTING eCatalogue | https://harting.com/09360162601 |

Identification

| | |
|----------|---------------------|
| Category | Inserts |
| Series | Han [®] Ex |

Version

| | |
|--------------------|---|
| Termination method | Screw termination |
| Gender | Male |
| Size | 16 B |
| Number of contacts | 16 |
| PE contact | Yes |
| Details | ATTENTION! Only to be used with Han [®] Ex hoods and housings! |

Technical characteristics

| | |
|-------------------------|------------------------------|
| Conductor cross-section | 0.75 ... 2.5 mm ² |
| Rated current | 16 A |
| Rated voltage | 90 V |
| Insulation resistance | >10 ¹⁰ Ω |
| Contact resistance | ≤1 mΩ |
| Tightening torque | 0.5 Nm |
| Limiting temperature | -20 ... +40 °C |
| Mating cycles | ≥500 |

Material properties

| | |
|-------------------|--------------------|
| Material (insert) | Polycarbonate (PC) |
|-------------------|--------------------|



Pushing Performance
Since 1945

Material properties

| | |
|---|--|
| Colour (insert) | RAL 7032 (pebble grey) |
| Material (contacts) | Copper alloy |
| Surface (contacts) | Silver plated |
| Material flammability class acc. to UL 94 | V-0 |
| RoHS | compliant with exemption |
| RoHS exemptions | 6(c): Copper alloy containing up to 4 % lead by weight |
| ELV status | compliant with exemption |
| China RoHS | 50 |
| REACH Annex XVII substances | Not contained |
| REACH ANNEX XIV substances | Not contained |
| REACH SVHC substances | Yes |
| REACH SVHC substances | Lead |
| ECHA SCIP number | 60b1a572-bb3f-476f-9307-b7d1688bd90c |
| California Proposition 65 substances | Yes |
| California Proposition 65 substances | Lead Nickel |
| Fire protection on railway vehicles | EN 45545-2 (2020-08) |
| Requirement set with Hazard Levels | R22 (HL 1-3) R23 (HL 1-3) |

Commercial data

| | |
|--------------------------------|---|
| Packaging size | 1 |
| Net weight | 8 g |
| Country of origin | Germany |
| European customs tariff number | 85366990 |
| GTIN | 5713140054929 |
| ETIM | EC000438 |
| eCl@ss | 27440205 Contact insert for industrial connectors |