

Han 6 HPR Base Panel Screw locking

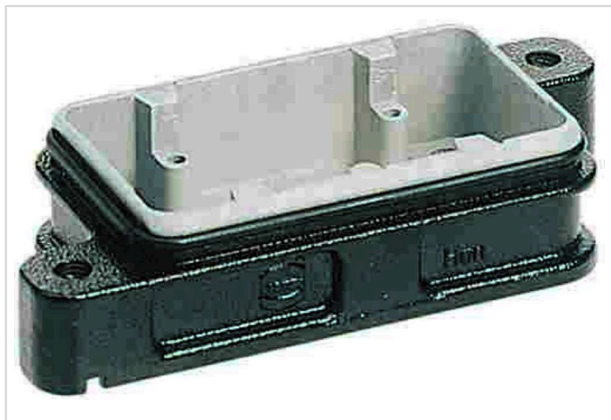


Image is for illustration purposes only. Please refer to product description.

Part number	09 40 006 0311
Specification	Han 6 HPR Base Panel Screw locking
HARTING eCatalogue	https://b2b.harting.com/09400060311

Identification

Category	Hoods / Housings
Series of hoods/housings	Han® HPR
Type of hood/housing	Bulkhead mounted housing

Version

Size	6 B
Locking type	Screw locking
Field of application	Hoods/housings for harsh outdoor environments

Technical characteristics

Tightening torque (screw locking)	4 Nm
Limiting temperature	-40 ... +125 °C
Note on the limiting temperature	For use as a connector according to IEC 61984.
Degree of protection acc. to IEC 60529	IP65
	IP68
	IP69 / IPX9K acc. to ISO 20653
Type rating acc. to UL 50 / UL 50E	4
	4X
	12

Material properties

Material (hood/housing)	Aluminium die-cast Corrosion resistant
Surface (hood/housing)	Powder-coated
Colour (hood/housing)	RAL 9005 (jet black)



Pushing Performance
Since 1945

Material properties

Material (seal)	NBR
RoHS	compliant
ELV status	compliant
China RoHS	e
REACH Annex XVII substances	Not contained
REACH ANNEX XIV substances	Not contained
REACH SVHC substances	Not contained
California Proposition 65 substances	Yes
California Proposition 65 substances	Nickel Naphthalene
Fire protection on railway vehicles	EN 45545-2 (2020-08)
Requirement set with Hazard Levels	R1 (HL 1-3) R7 (HL 1-3)

Specifications and approvals

UL / CSA	UL 1977 ECBT2.E235076 CSA-C22.2 No. 182.3 ECBT8.E235076
Approvals	CE DNV GL

Commercial data

Packaging size	1
Net weight	140 g
Country of origin	Germany
European customs tariff number	85389099
GTIN	5713140057180
ETIM	EC000437
eCl@ss	27440202 Shell for industrial connectors