



Pushing Performance
Since 1945

RJI RJ45 jack Cat.5 SMT angled T&R (130)

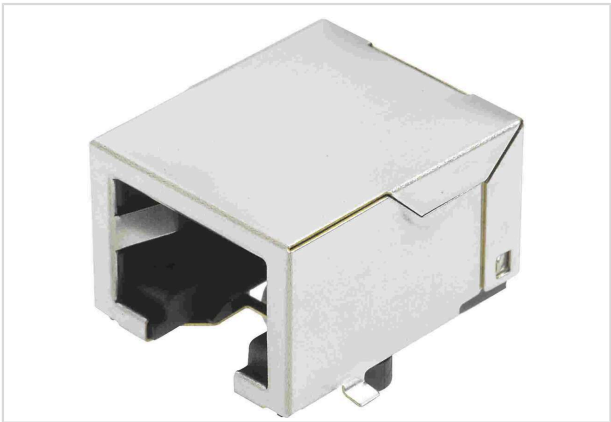


Image is for illustration purposes only. Please refer to product description.

Part number	09 45 551 1110
Specification	RJI RJ45 jack Cat.5 SMT angled T&R (130)
HARTING eCatalogue	https://harting.com/09455511110

Identification

Category	Connectors
Series	HARTING RJ Industrial®
Element	Female
Specification	RJ45 Angled

Version

Termination method	Reflow soldering termination (SMT)
Shielding	Fully shielded, 360° shielding contact
Number of contacts	8
Pack contents	Tape & reel

Technical characteristics

Rated current	1.5 A
Transmission characteristics	Cat. 5 Class D up to 100 MHz
Data rate	10 Mbit/s
	100 Mbit/s
	1 Gbit/s
	2.5 Gbit/s
Limiting temperature	-40 ... +85 °C
Mating cycles	≥750
Degree of protection acc. to IEC 60529	IP20



Pushing Performance
Since 1945

Material properties

RoHS	compliant
ELV status	compliant
China RoHS	e
REACH Annex XVII substances	Not contained
REACH ANNEX XIV substances	Not contained
REACH SVHC substances	Not contained
California Proposition 65 substances	Yes
California Proposition 65 substances	Lead Nickel

Specifications and approvals

UL / CSA	UL 1977 DUXR2.E254191 CSA-C22.2 No. 182.4, No. 233-09 DUXR8.E254191
Approvals	DNV GL

Commercial data

Packaging size	130
Net weight	1 g
Country of origin	Taiwan
European customs tariff number	85366990
GTIN	5713140061538
eCl@ss	27460201 PCB connector (board connector)
ETIM	EC002637
UNSPSC 24.0	39121415