



Pushing Performance
Since 1945

coding element for Q female and B male



Image is for illustration purposes only. Please refer to product description.

Part number	09 72 000 9903
Specification	coding element for Q female and B male
HARTING eCatalogue	https://b2b.harting.com/09720009903

Identification

Category	Accessories
Series	DIN 41612
Type of accessory	Code comb
Description of the accessory	Type B Type Q

Technical characteristics

Isolation group	IIIa ($175 \leq CTI < 400$)
-----------------	-------------------------------

Material properties

Material (accessories)	Thermoplastic
Colour (accessories)	RAL 7032 (pebble grey)
Material flammability class acc. to UL 94	V-0
RoHS	compliant
ELV status	compliant
China RoHS	e
REACH Annex XVII substances	Not contained
REACH ANNEX XIV substances	Not contained
REACH SVHC substances	Not contained

Specifications and approvals

Railway classification	F1/I2 acc. to NFF 16-101/102
------------------------	------------------------------

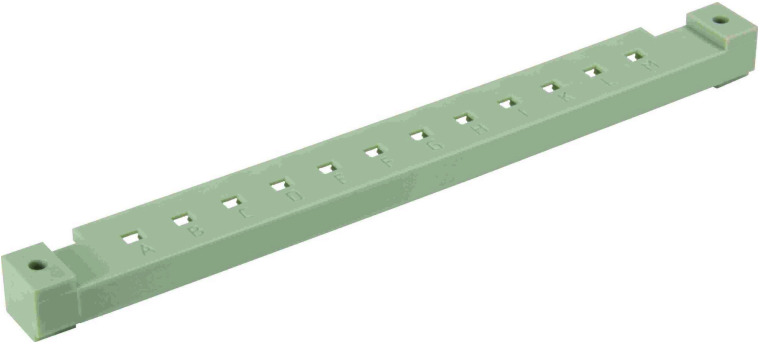


Pushing Performance
Since 1945

Commercial data

Packaging size	20
Net weight	4.35 g
Country of origin	Germany
European customs tariff number	85389099
GTIN	5713140215405
ETIM	EC002311
eCl@ss	27440203 Coding for industrial connectors

Side coding
(without loss of contact)



To avoid cross-plugging of adjacent connectors a coding system is required. This coding system is an integral part of both male and female connectors. A comb with 12 coding pins, which is supplied under part number 09 02 000 9928, allows over 900 coding variations. The pins are to be locked into the male and female connectors. These coding bars can be screwed on the top side of angled male and female connectors. They are alternatives to the male and female connectors with pre-assembled or splashed coding bars. As far as available we recommend the connectors with pre-assembled or splashed coding bar.