

## Han Yellock Adapter Frame Han-Modular

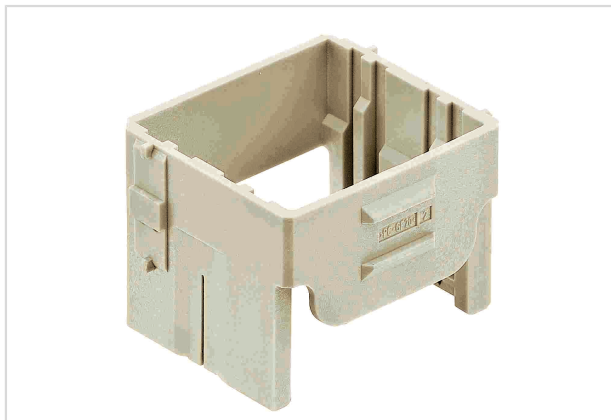


Image is for illustration purposes only. Please refer to product description.

|                    |   |
|--------------------|---|
| Part number        | 11 00 300 0301  |
| Specification      | Han Yellock Adapter Frame Han-Modular   |
| HARTING eCatalogue | <a href="https://b2b.harting.com/11003000301">https://b2b.harting.com/11003000301</a> |

### Identification

|                              |  |
|------------------------------|--|
| Category                     | Accessories  |
| Series                       | Han-Yellock®   |
| Type of accessory            | Adapter frames                                       |
| Description of the accessory | for bulkhead mounted housings<br>for Han-Yellock® 30 |

### Material properties

|   |                        |
|---|------------------------|
| Material (accessories)                    | Polycarbonate (PC)     |
| Colour (accessories)                      | RAL 7032 (pebble grey) |
| Material flammability class acc. to UL 94 | V-0                    |
| RoHS                                      | compliant              |
| ELV status                                | compliant              |
| China RoHS                                | e                      |
| REACH Annex XVII substances               | No                     |
| REACH ANNEX XIV substances                | No                     |
| REACH SVHC substances                     | No                     |

### Specifications and approvals

|                |                         |
|----------------|-------------------------|
| Specifications | EN 60664-1<br>IEC 61984 |
| Approvals      | DNV GL                  |

### Commercial data

|                |   |
|----------------|---|
| Packaging size | 2 |
|----------------|---|



Pushing Performance

## Commercial data

|                                |   |
|--------------------------------|---|
| Net weight                     | 8 g   |
| Country of origin              | Germany   |
| European customs tariff number | 85389099  |
| eCl@ss                         | 27440210 Fixing element for industrial connectors |