

## YELLOCK MONOBLOCK 60 MALE

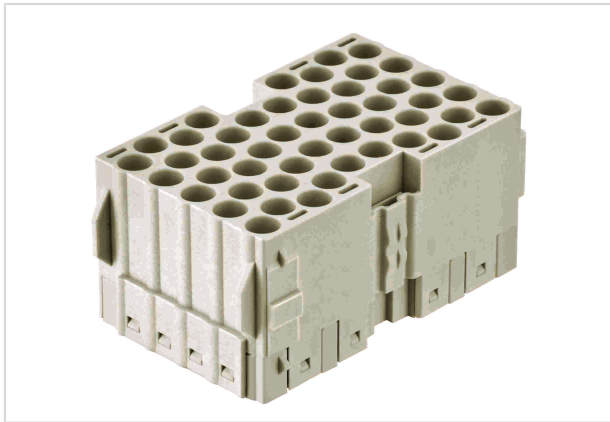


Image is for illustration purposes only. Please refer to product description.

Part number	11 05 648 3001
Specification	YELLOCK MONOBLOCK 60 MALE
HARTING eCatalogue	<a href="https://b2b.harting.com/11056483001">https://b2b.harting.com/11056483001</a>

### Identification

Category	Inserts
Series	Han-Yellock®
Element	Monoblock

### Version

Termination method	Crimp termination
Gender	Male
Size	Han-Yellock® 60
Number of contacts	48
Details	Please order crimp contacts separately.

### Technical characteristics

Conductor cross-section	0.14 ... 4 mm <sup>2</sup>
Rated current	16 A
Rated voltage	500 V
Rated impulse voltage	6 kV
Pollution degree	3
Insulation resistance	>10 <sup>10</sup> Ω
Limiting temperature	-40 ... +125 °C
Mating cycles	≥500

### Material properties

Material (insert)	Polycarbonate (PC)
-------------------	--------------------



Pushing Performance

## Material properties

Colour (insert)	RAL 7032 (pebble grey)
Material flammability class acc. to UL 94	V-0
RoHS	compliant
ELV status	compliant
China RoHS	e
REACH Annex XVII substances	No
REACH ANNEX XIV substances	No
REACH SVHC substances	No

## Specifications and approvals

Specifications	EN 60664-1 IEC 61984
Approvals	DNV GL
UL / CSA	UL 1977 ECBT2.E235076

## Commercial data

Packaging size	1
Net weight	40.4 g
Country of origin	Germany
European customs tariff number	85389099
eCl@ss	27440205 Contact insert for industrial connectors