

Han 16HPR-enlarged-HSMA1-SCL-M40

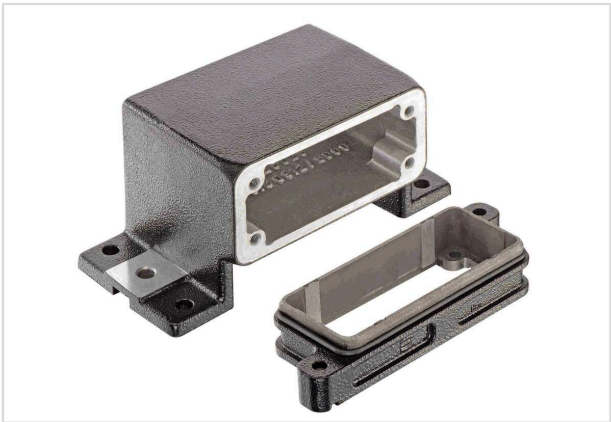


Image is for illustration purposes only. Please refer to product description.

Part number	19 40 016 0958
Specification	Han 16HPR-enlarged-HSMA1-SCL-M40
HARTING eCatalogue	https://b2b.harting.com/19400160958

Identification

Category	Hoods / Housings
Series of hoods/housings	Han [®] HPR enlarged
Type of hood/housing	Surface mounted housing
Description of hood/housing	Horizontal version

Version

Size	16 HPR enlarged
Version	Top entry
Number of cable entries	1
Cable entry	1x M40
Locking type	Screw locking
Field of application	Hoods/housings for harsh outdoor environments
Details	When using Han [®] Standard inserts of size B or Han-Modular [®] hinged frames, please order adapter 09400009961 separately.

Technical characteristics

Tightening torque (screw locking)	4 Nm
Limiting temperature	-40 ... +125 °C
Note on the limiting temperature	For use as a connector according to IEC 61984.
Degree of protection acc. to IEC 60529	IP65
	IP68
	IP69 / IPX9K acc. to ISO 20653



Pushing Performance
Since 1945

Technical characteristics

Type rating acc. to UL 50 / UL 50E	4
	4X
	12

Material properties

Material (hood/housing)	Aluminium die-cast Corrosion resistant
Surface (hood/housing)	Powder-coated
Colour (hood/housing)	RAL 9005 (jet black)
Material (seal)	NBR
Material (locking)	Stainless steel

Specifications and approvals

UL / CSA	UL 1977 ECBT2.E235076
	CSA-C22.2 No. 182.3 ECBT8.E235076
Approvals	CE
	DNV GL

Commercial data

Packaging size	1
Net weight	1,073 g
Country of origin	Germany
European customs tariff number	85389099
GTIN	5713140173101
ETIM	EC000437
eCl@ss	27440202 Shell for industrial connectors