



Pushing Performance
Since 1945

preLink RJ45 plug, IP20 Cat.6A L-90°

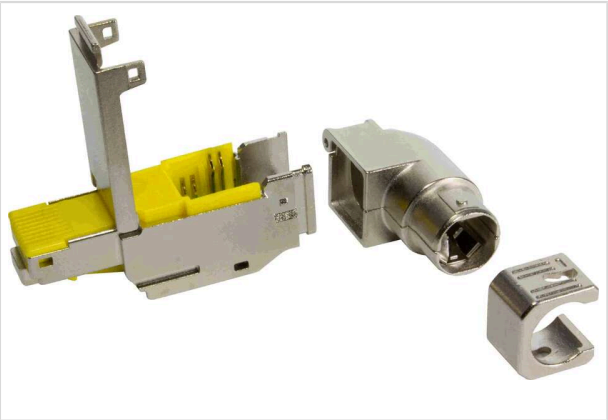


Image is for illustration purposes only. Please refer to product description.

Part number	20 82 101 0021
Specification	preLink RJ45 plug, IP20 Cat.6A L-90°
HARTING eCatalogue	https://b2b.harting.com/20821010021

Identification

Category	Connectors
Series	preLink®
Element	Connector
Specification	RJ45 90° angled
Features	Suitable for all PoE versions

Version

Termination method	preLink® IDC insulation displacement termination
Gender	Male
Shielding	Shielded
Number of contacts	8
Coding	RJ45
Details	This item requires additional a termination block. Please select these under “Matching Products”.

Technical characteristics

Transmission characteristics	Cat. 6 _A Class E _A up to 500 MHz
Data rate	10 Mbit/s
	100 Mbit/s
	1 Gbit/s
	2.5 Gbit/s
	5 Gbit/s
	10 Gbit/s
Limiting temperature	-40 ... +85 °C



Pushing Performance
Since 1945

Technical characteristics

Relative humidity	95 % Non-condensing (operation)
Mating cycles	≥750
Degree of protection acc. to IEC 60529	IP20
Cable diameter	5 ... 9 mm
Vibration resistance	10-500 Hz, 0.35 mm / 50 m/s², 2h/axis 5.72 m/s² acc. to IEC 61373 Category 1 Class B
Shock resistance	50 g / 30 ms, 3 shocks / axis and direction acc. to IEC 61373 Category 1 Class B

Material properties

Material (insert)	Zinc die-cast, nickel-plated
RoHS	compliant
ELV status	compliant
China RoHS	e
REACH Annex XVII substances	Not contained
REACH ANNEX XIV substances	Not contained
REACH SVHC substances	Not contained
California Proposition 65 substances	Not contained

Specifications and approvals

UL / CSA	UL 1977 ECBT2.E102079 CSA-C22.2 No. 182.3 ECBT8.E102079
Approvals	DNV GL
PROFINET	Yes

Commercial data

Packaging size	1
Net weight	26.46 g
Country of origin	Latvia
European customs tariff number	85366990
GTIN	5713140224216
ETIM	EC002636
eCl@ss	27440114 Rectangular connector (for field assembly)