

Adapter M12 RJ45 Cat 5a angled

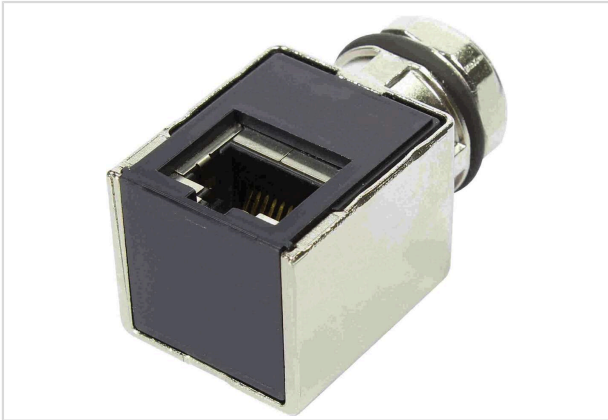


Image is for illustration purposes only. Please refer to product description.

Part number	21 03 381 4401
Specification	Adapter M12 RJ45 Cat 5a angled
HARTING eCatalogue	https://harting.com/21033814401

Identification

Category	Accessories
Series	Circular connectors M12 RJ45
Connector 1	Female 4 poles RJ45
Type of accessory	Adapter
Description of the accessory	Panel feed through

Version

Gender	Female
Coding	D-coding

Technical characteristics

Rated current	4 A
Rated voltage	48 V AC 60 V DC
Transmission characteristics	Cat. 5 Class D up to 100 MHz
Data rate	10 Mbit/s 100 Mbit/s
Limiting temperature	-40 ... +85 °C
Mating cycles	≥100
Degree of protection acc. to IEC 60529	IP65 / IP67 mated condition
Thickness of the panel	2.1 ... 4.5 mm



Pushing Performance
Since 1945

Material properties

Material (insert)	Liquid crystal polymer (LCP)
Material (contacts)	Copper alloy
Surface (contacts)	Au over Ni Mating side
Material (hood/housing)	Zinc die-cast
Material flammability class acc. to UL 94	V-0
RoHS	compliant with exemption
RoHS exemptions	6(c): Copper alloy containing up to 4 % lead by weight
ELV status	compliant with exemption
China RoHS	50
REACH Annex XVII substances	Not contained
REACH ANNEX XIV substances	Not contained
REACH SVHC substances	Yes
REACH SVHC substances	Lead
ECHA SCIP number	0d7d3693-d625-47ab-934a-d241bf72c86e
California Proposition 65 substances	Yes
California Proposition 65 substances	Lead Nickel
Fire protection on railway vehicles	EN 45545-2 (2020-08)
Requirement set with Hazard Levels	R26

Specifications and approvals

Specifications	IEC 61076-2-101
UL / CSA	UL 1977 ECBT2.E102079 CSA-C22.2 No. 182.3 ECBT8.E102079
PROFINET	Yes

Commercial data

Packaging size	1
Net weight	40 g
Country of origin	Romania
European customs tariff number	85389099
GTIN	5713140138308
eCl@ss	27440292 Connector component (accessories)
ETIM	EC002943



Pushing Performance
Since 1945

Commercial data

UNSPSC 24.0

39121400
