



Image for illustrative purpose only

Summary

[Request a quote](#)

[Catalog](#)

Nb of contacts Triax	1
Locking system	Push-pull
Size	4M

https://www.lemo.com/int_en/rma-4m-675-ctm.html

LEMO products and services are provided "as is". LEMO makes no warranties or representations with regard to LEMO product & services or use of them, express, implied or statutory, including for accuracy, completeness, or security. The user is fully responsible for his products and applications using LEMO components.

Technical details

Electrical Configuration

Nb of contacts Triax	1
Contact Termination Triax	Crimp
Insert configuration value	4M.675 - 1 Triax (75 Ohm)
Insulator	T: PTFE
Rated current	15 A
Impedance	75 Ohm
OHM	75
Vtest	1500 V (AC), 2120 V (DC)

Form & Material

Shell style / Model id	RMA - Straight coupler
Housing material	Brass (chrome plated [SAE AMS 2460]) shell and collet nut, nickel plated [SAE AMS QQ N 290] brass latch sleeve and mid pieces
Locking system	Push-pull
Keying	1 key (alpha=0, plug: male contacts, receptacle: female contacts)
Colour	Grey
Weight	146.33 g

Environment

Technical domain	Motorsport, Security and Defence, Transportation, Aerospace and UAV
Environmental sealing (IP rating)	IP66
Climatical Category	55/175/21
Humidity (max)	<=95% [at 60 deg C /140 F]
Shielding (min)	85 dB (10 MHz)
Shock Resistance	100 g [6 ms]
Vibration	15 g [10 Hz - 2000 Hz]
Salt Spray Corrosion	>1000 hr

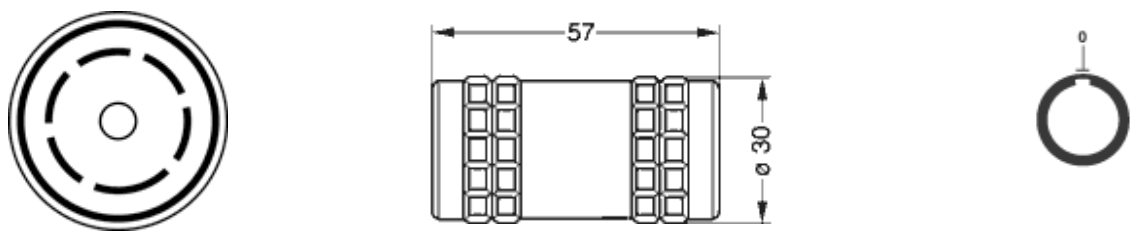
Cable fixation

Cable termination protection	Standard back nut (no additional protection)
------------------------------	--

https://www.lemo.com/int_en/rma-4m-675-ctm.html

LEMO products and services are provided "as is". LEMO makes no warranties or representations with regard to LEMO product & services or use of them, express, implied or statutory, including for accuracy, completeness, or security. The user is fully responsible for his products and applications using LEMO components.

Drawings



Dimensions

	A	L
mm.	30	57
in.	1.18	2.24