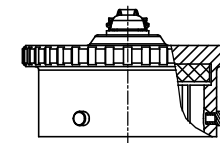


REVISIONS					
REV	ECO	DESCRIPTION	DATE	BY	APPR
B1	-	RELEASED DRAWING	JUN-25-2014	BEN	TOMMY



RT616DC X X
① ②

P/N	①	②	CHAIN	PLATING
RT616DC	---	---	NO CHAIN	NICKEL PLTING
RT616DCA	---	A	NO CHAIN	BLACK ANODIZING
RT616DCG	G	---	CHAIN	NICKEL PLTING
RT616DCGA	G	A	CHAIN	BLACK ANODIZING

NOTES : (UNLESS OTHERWISE SPECIFIED)

1. MATERIAL :

DUST CAP : AL ALLOY , NICKEL PLATED.

CHAIN : STAINLESS STEEL.

LOCATING RIVET : STAINLESS STEEL.

RIVET : COPPER ALLOY,NICKEL PLATING

O-RING : NBR.

2. SPECIFICATIONS :

2.1 OPERATING TEMPERATURE : -40°C ~ +105°C.

2.2 IP--CLASS : IP67.

2.3 MATING CYCLES DURABILITY : 500 CYCLES MIN.

2.4 ROHS COMPLIANT.

3. ALL DIMENSIONS ARE FOR REFERENCE USE ONLY.

SEE PART NUMBER CHART			
QUANTITY	PART NUMBER	DESCRIPTION	ITEM
MATERIALS LIST			
<small>UNLESS OTHERWISE SPECIFIED</small> 1) All dimensions are in metric(mm). 2) Tolerances are as follows: 1 PL DEC ±0.30 Fractions ±1/64 2 PL DEC ±0.15 Angles ±1° 3 PL DEC ±0.08 3) Note reference =		SIGNATURES DATE DRAWN: BEN JUN-25-2014 CHECKED: ENGINEER: APPROVAL:	 Sine Systems - www.amphenol-sine.com 44724 Morley Drive Clinton Township, MI 48036
MATERIAL SPECIFICATIONS: CUSTOMER:		APPROVAL:	
PROCESS SPECIFICATIONS: NEXT ASSY:		THIS DRAWING IS SUPPLIED FOR INFORMATION ONLY. DESIGN FEATURES, SPECIFICATIONS AND PERFORMANCE DATA SHOWN HEREON ARE THE PROPERTY OF THE AMPHENOL CORPORATION. NO RIGHTS OF REPRODUCTION ARE IMPLIED. ALL DIMENSIONS ARE SUBJECT TO NORMAL MANUFACTURING VARIATIONS.	
SIZE TYPE DWG NO. REVISION B C- RT616DCxx B1		SCALE: NONE SHEET 1 OF 1	