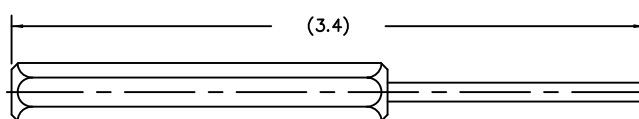


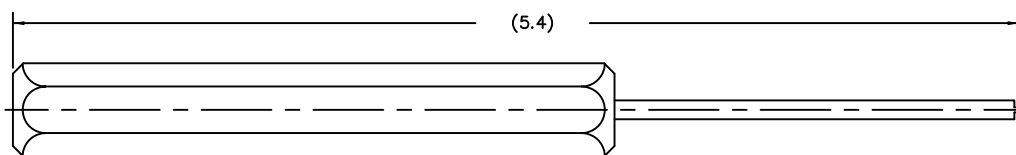
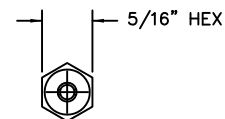


Accessories

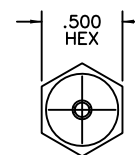
Nut Spanner Wrenchs



TN1680



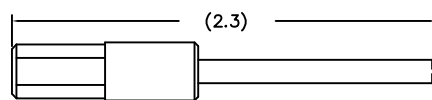
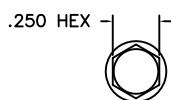
TN4612



USING EITHER OF THE SPANNER WRENCHES SHOWN ABOVE, GUIDE SETS MAY BE REMOVED AND REPOSITIONED IN ANY OF THE 64 POLARIZING POSITIONS. REFER TO PAGE WA-18 FOR POLARIZATION CHART.

CAUTION: WHEN POLARIZED POSITIONS ARE CHANGED, APPLY LOCTITE 242® TO THREADS.

IF SPANNER NUTS ARE DIFFICULT TO REMOVE DUE TO HARDENED LOCTITE®, APPLY HEAT (300° F) TO NUT AREA FOR ONE HOUR AND REPEAT REMOVAL OPERATION.

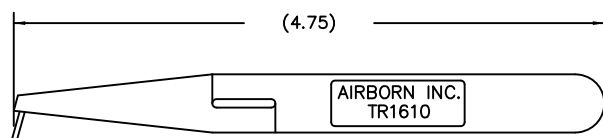


TN21243

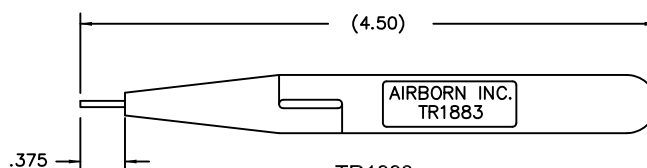
THE 1/4" DRIVE SPANNER WRENCH ABOVE IS DESIGNED FOR USE IN TORQUE WRENCHES

Accessories

Insertion & Removal Tools



TR1610

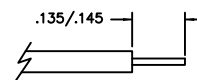
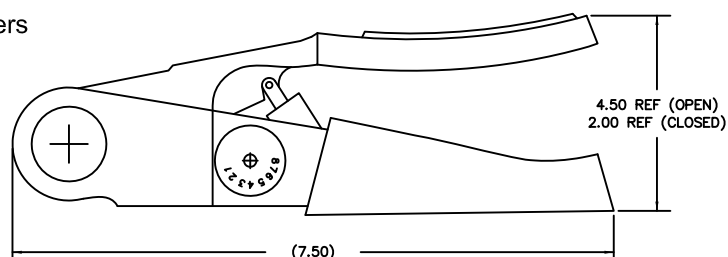


TR1883

Accessories

Crimp Tools & Positioners

TC1652 - CRIMP TOOL
REF M22520/2-01
TP1653 - POSITIONER
REF M22520/2-06



INSULATION STRIPPING
EXPOSE .135/.145 BARE WIRE
LENGTH FOR INSERTION INTO
CONTACT.

TOOL SELECTION TABLE		
CONTACT	TOOL NO.	POSITIONER
WTK2222P	TC1652	TP1985
WTK2222S		TP1653
WTK2220S657		TP2435
WTK2220P657		TP13784