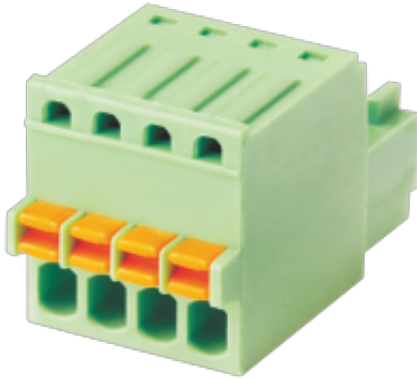


WJ15EDGKD-2.5
PLUG-IN TERMINAL BLOCK



PCB connector
 Rated current: 5 A
 Rated voltage: 150 V
 Wire range: 26-20 AWG
 Pitch: 2.5 mm
 Connection method: Push-in spring connection



UL/CUL

Use Group	B	C	D
Rate Voltage [V]	150	-	-
Rated Current [A]	5	-	-
Wire Range [AWG]	26~20		
Dielectric Voltage-Withstand	1.3KV		

IEC

Overvoltage Category	III	III	II
Contamination Class	3	2	2
Rated Voltage [V]	100	160	320
Rated Current [A]	6	6	6
Impulse withstand voltage [KV]	1.5	2.5	2.5

Conductor cross section[solid/flexible] [mm ²]	0.2~0.5
--	---------

Material

Insulation Material	PA66
Flame retardant rating	UL94V-0
Conductor Material	Copper alloy
Plating of conductor surface	Ni plated

Other Data

Pitch/Poles [mm]/[P]	
Stripping Length [mm]	7~8
Screw/Torque(Max)[N.m]	/
Operating temperature [°C]	-40~+105
Soldering temperature	/
Pin dimensions [mm]	/
PCB Hole Diameter [mm]	/

Dimensions

