

16 NES/J 21 W

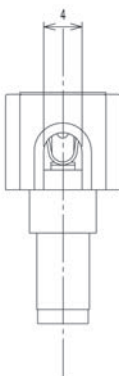
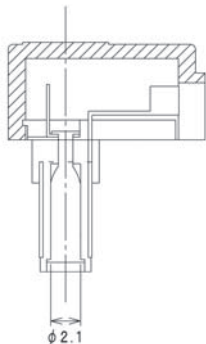
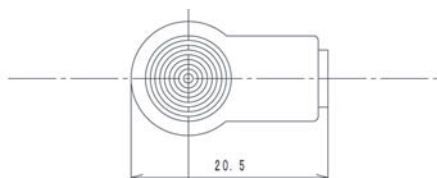
Power supply connectors



Power supply plug, angular version, with solder eyes

16

NES/J 21 W



Environmental conditions

Temperature range -20 °C/+70 °C

Materials

Insulating body ABS
Contact CuZn, nickel-plated
Housing PE

Mechanical data

Outer diameter 5.5 mm
Inner diameter 2.1 mm

Connectable conductors for solder area

Cable diameter 4 mm

Electrical data (at T_{amb} 20 °C)

Rated current 0.5 A
Rated voltage 12 V DC
Rated impulse voltage 500 V/60 s
Insulation resistance ≥ 100 MΩ

Associated products

Counterparts

☞ 1610 06	☞ 1613 14	☞ 1613 18
☞ 1613 28	☞ 1613 30	☞ 1613 32
☞ 1614 09	☞ 1614 14	☞ 1614 16
☞ 1614 19	☞ 1614 23	☞ NEB 21 R-C
☞ NEB/J 21	☞ NEB/J 21 C	☞ NEB/J 21 R
☞ NEK/J 210		

16

NES/J 21 W

Designation	Pole Number	PU (Pieces)	MDQ (Pieces)
NES/J 21 W	2	100	500

Packaging:

in bulk, in a cardboard box or a plastic bag