



Cu to Cu Only



CRIMP CONNECTORS

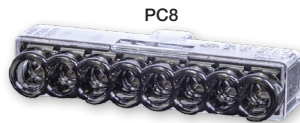
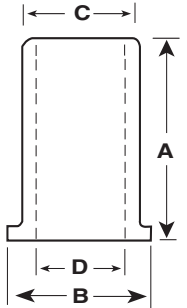
Use GB® crimp connectors for strong, vibration-resistant permanent connections in branch circuit and fixture wiring.

- Two styles and sizes available.
- Copper or zinc-plated steel.

Dimensions

	A	B	C	D
310/311 (Copper)	3/8"	19/64"	1/4"	13/64"
410/411 (Steel)	5/8"	23/64"	21/64"	17/64"

Part #	Type	Pack Qty.	Wire Range	Min	Max
10-310C	Copper	100/Clam	#18 - #10 AWG	2 #16	2 #10 + 1 #12
10-311C	Copper	50/Clam	#14 - #8 AWG	3 #12	4 #10
20-410	Zinc-Plated Steel	12/Clam	#18 - #10 AWG	2 #16	2 #10 + 1 #12
10-410	Zinc-Plated Steel	100/Box	#18 - #10 AWG	2 #16	2 #10 + 1 #12
10-410C	Zinc-Plated Steel	100/Clam	#18 - #10 AWG	2 #16	2 #10 + 1 #12
13-410	Zinc-Plated Steel	500/Bag	#18 - #10 AWG	2 #16	2 #10 + 1 #12
27-410	Zinc-Plated Steel	10000/Box	#18 - #10 AWG	2 #16	2 #10 + 1 #12
20-411	Zinc-Plated Steel	8/Clam	#14 - #8 AWG	3 #12	4 #10
10-411	Zinc-Plated Steel	50/Box	#14 - #8 AWG	3 #12	4 #10



PC8



PC4



PC3

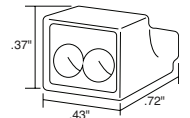
Cu to Cu Only



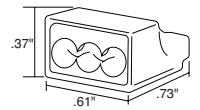
PUSH-IN CONNECTORS

Easy and fast to use, just strip and push conductors into PushGard™ connectors to make reliable, secure connections.

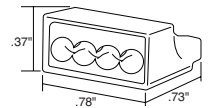
- Clear polycarbonate housings have color-coded side panels for connection verification and identification.
- With corrosion-resistant stainless steel springs, PushGard™ connectors restrict wire pullout, yet corrections are possible with a simple left-right twist and pull.
- Continuity test point for easy voltage checks.
- Rated at 600 V Max. in building wire and at 1000 V Max. in lighting fixtures/luminaries.



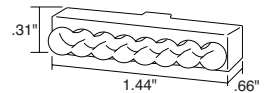
PC2



PC3



PC4



PC8

Part #	Color	Pack Qty.	Wire Range	# of Ports
19-PC2	Red	10/Clam	#22 - #12 AWG Solid	2
10-PC2	Red	100/Jar	#22 - #12 AWG Solid	2
19-PC3	Orange	10/Clam	#22 - #12 AWG Solid	3
10-PC3	Orange	100/Jar	#22 - #12 AWG Solid	3
19-PC4	Yellow	10/Clam	#22 - #12 AWG Solid	4
10-PC4	Yellow	100/Jar	#22 - #12 AWG Solid	4
19-PC8	Black	10/Clam	#22 - #12 AWG Solid	8
10-PC8	Black	50/Jar	#22 - #12 AWG Solid	8

NEW LEVER CONNECTORS

Introducing our new LeverGard™ wire connectors. LeverGard™ connectors have the ability to secure both stranded and solid wire. The versatility that LeverGard™ connectors offer give the ability to secure 24-12 AWG solid/stranded wire within a number of different ports.

- Strong protruding levers w/ anti-slip design and for easy use.
- Clear body design to show wire is secure and connected.
- Allows for multiple wire size combination to fit in one connector.
- 24-12 AWG Solid/Stranded wire.
- 600V max rated w/ 105°C max temp rating

Part #	Color	Pack Qty.	Wire Range	# of Ports
19-PCL2	Clear/Green	10/Bag	#24 - #12 AWG Solid/Str.	2
19-PCL3	Clear/Green	10/Bag	#24 - #12 AWG Solid/Str.	3
19-PCL5	Clear/Green	10/Bag	#24 - #12 AWG Solid/Str.	5



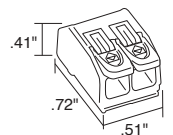
19-PCL2



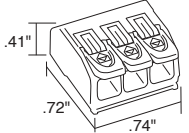
19-PCL3



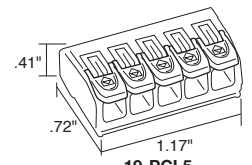
19-PCL5



19-PCL2



19-PCL3



19-PCL5